

One hose. Many fuel types.  
Maximum performance.



Eaton® GH100 and GH101 biodiesel hose.  
Engineered to go beyond.



**EATON**

*Powering Business Worldwide*

# Introducing a biodiesel hose that's engineered to handle the heat.

» Truck and mobile machine engine compartments are taking more heat than ever before. Regulations such as EPA 07 and EPA 10 in already hot climates, plus the growing use of high-percentage biodiesel fuels, are creating conditions that significantly shorten hose life.

Standard hoses that aren't compatible with biofuels can prematurely crack, leak or burst at high temperatures, leading to safety, liability and warranty issues. You might not always know where your trucks or machines go, or what kind of fuel customers will use, but with Eaton GH100 and GH101 biodiesel hose, you can rest easy.

## Lightweight, flexible reinforcement

With an aramid poly-braid reinforcement that's durable yet lightweight and flexible, GH100 and GH101 hoses are easier to install compared to wire-braided hoses.



Brass



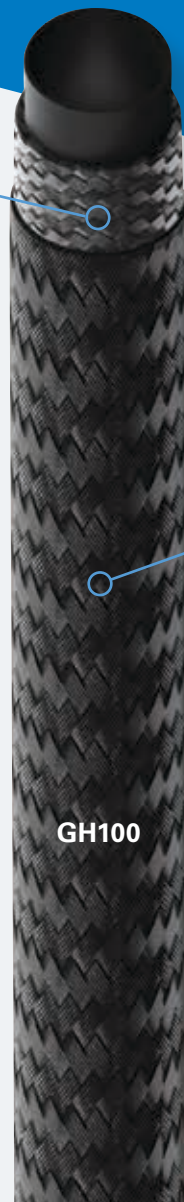
Steel



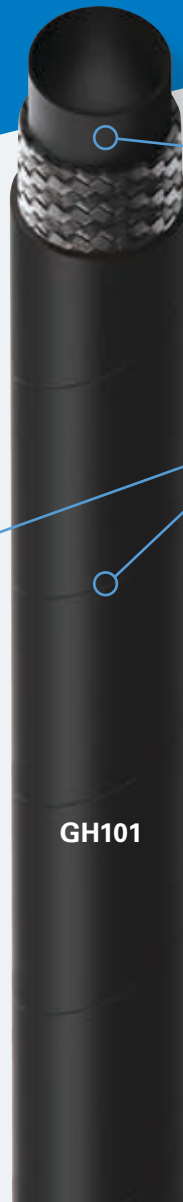
Stainless steel

## Multiple fitting options

Both GH100 and GH101 are qualified with the Eaton Steel Over the Cover (OTC) fitting. GH101 is also qualified with brass crimp fittings. For composite crimp connections, contact your Eaton sales representative or Eaton technical support.



GH100



GH101

## Highly resistant rubber tube

The hydrogenated nitrile rubber tube is made with a proprietary polymer that more effectively resists degradation from higher-percentage blends of biofuel.

## Choice of exceptionally durable hose cover

You can select an abrasion-resistant braided polyester cover (GH100) or a highly durable rubber cover (GH101), depending on the application.

## Application types:

- Transmission oil cooler (TOC) and engine oil
- Tank-to-tank biofuel transfer
- Mobile on or off-highway vehicles

## Qualified with a variety of fuel types

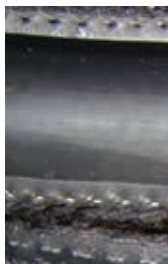
GH100 and GH101 are qualified with ultra-low-sulfur diesel (ULSD), every blend of biodiesel up to B100, and a variety of synthetic oils – for superior hose life even if your customers use different fuels from day to day.

### Fuel and oil compatibility

✓	Ultra-low-sulfur diesel (ULSD)
✓	B2 (SME and RME)
✓	B5 (SME and RME)
✓	B20 (SME and RME)
✓	B100 (SME and RME)
✓	Synthetic oils

## Exceptional performance in extreme temperatures

Fuel type	Temperature
B2, B5 and B20	-40°C to 150°C
B100	-40°C to 125°C
Synthetic oils	-40°C to 150°C <i>175°C intermittent</i>



### No cracking at 1,000 Hours

During a 1000-hour hot fuel circulation test with B100, GH100 and GH101 maintained excellent tensile, hardness and elongation with no cracking of the tube wall.



## Meets and exceeds all major industry specs

GH100 and GH101 meet the requirements of all common industry test methods, including ASTM D380, ASTM D6751, EN412 and EN2240, ensuring reliable performance. Eaton also tests beyond customer specifications to demonstrate the true life of the product, and can provide test summaries for material properties, elongation, hardness, tensile, volume change, hot fuel circulation and permeation.



Ready to consider a biodiesel hose that's engineered to go beyond? Visit [eaton.com/GH100](http://eaton.com/GH100) to find out more.

# Specifications and performance

Part No.	Hose inner dimension		Hose outer dimension		Max. operating pressure		Min. burst pressure		Min. bend radius		Weight	
	mm	inch	mm	inch	bar	psi	bar	psi	mm	inch	kg/ft	lbs/ft
GH100-4	6.4	0.25	13.3	0.53	28	400	112	1600	31.8	1.25	0.04	0.08
GH100-6	9.5	0.38	15.9	0.62	28	400	112	1600	38.1	1.50	0.05	0.10
GH100-8	12.7	0.50	19.1	0.75	28	400	112	1600	50.8	2.00	0.05	0.13
GH100-10	15.9	0.63	23.1	0.91	24	350	96	1400	63.5	2.50	0.06	0.18
GH100-12	19.2	0.75	27.9	1.10	24	350	96	1400	76.2	3.00	0.08	0.20
GH101-4	6.4	0.25	14.6	0.57	28	400	112	1600	31.8	1.25	0.06	0.14
GH101-6	9.5	0.38	17.4	0.69	28	400	112	1600	38.1	1.50	0.06	0.18
GH101-8	12.7	0.50	21.2	0.83	28	400	112	1600	50.8	2.00	0.11	0.25
GH101-10	15.9	0.62	24.5	0.96	28	400	112	1600	69.8	2.75	0.13	0.28

## Where to go for world-class hose assembly services

Our expert distribution partners are trained to specify size, end connections and assembly for your unique application, ensuring you receive Eaton quality and reliability every single time.

» To find a distributor near you, visit [eaton.com/locatedistributor](http://eaton.com/locatedistributor)