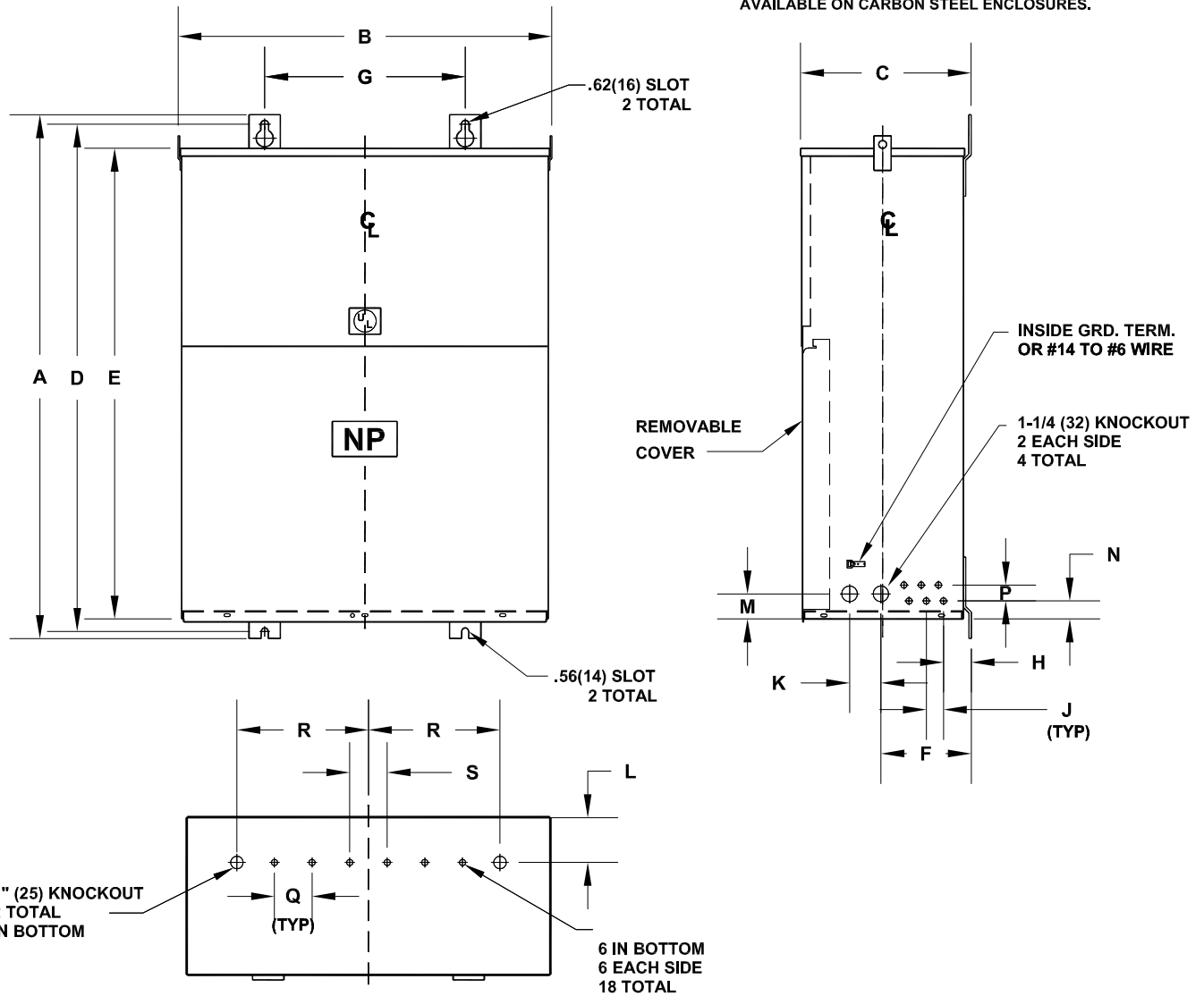


NOTES:

1. THREE PHASE MINI POWER CENTER.
2. INDOOR/OUTDOOR RATED NEMA - 3R.
3. PRIMARY MAIN CIRCUIT BREAKER INCLUDED.
4. SECONDARY MAIN CIRCUIT BREAKER INCLUDED.
5. GROUND BAR INCLUDED.
6. FEEDER CIRCUIT BREAKERS NOT INCLUDED.

7. 180°C CLASS INSULATION WITH 115°C RISE.
8. COPPER OR ALUMINUM WINDINGS.
9. ALUMINUM INTERIOR STABS OR COPPER INTERIOR BOLT-ON.
10. PAINT COLOR ANSI #61.
11. ALL UNITS ARE DESIGNED IN ACCORDANCE WITH APPLICABLE NEMA, UL, ANSI, IEEE AND CSA STANDARDS.
12. KO'S SHOWN ON THIS DRAWING ONLY AVAILABLE ON CARBON STEEL ENCLOSURES.



DIMENSIONS IN in(mm)

FRAME	A	B	C	D	E	F	G
FR290A	40.88(1038)	29.88(759)	13.63(346)	39.50(1003)	36.63(930)	7.22(183)	16.00(406)
	H	J	K	L	M	N	P
	2.22(56)	1.38(35)	2.50(64)	3.58(91)	2.00(51)	1.44(37)	1.25(32)
	Q	R	S				
	3.00(76)	10.50(266)	2.00(50)				

This Frame is not California's OSHPD certified, contact TRC for compliant frame information

THIS DIMENSION DRAWING IS FOR REFERENCE ONLY. IT IS NOT TO BE REGARDED AS INDICATING THE EXACT DETAILS OF CONSTRUCTION.

PRODUCT CODE: TRANSFORMER		FEDERAL ID NO.		DFTR SCT	DATE 10/03/02	THE INFORMATION ON THIS DOCUMENT WAS CREATED BY EATON CORPORATION. IT WAS DISCLOSED IN CONFIDENCE AND IS ONLY TO BE USED FOR THE PURPOSE IN WHICH IT WAS SUPPLIED.		EATON
08	ECN090114	J.C.S.	C.B.	6/MAY/15	APPD CEE	DATE 10/03/02	TITLE DRY TYPE TRANSFORMER OUTLINE	
07	CLEAN DWG & UPDATE REVISION ECO-049980	M.RDZ	C.BADILLO	16/04/13	S.O.		TYPE DRY TYPE TRANSFORMER	OUTLINE
05	Agregar Leyenda OSHPD ECN068605	ANAVA	C.BADILLO	12/10/2012	REVISION 08		G.O.	DWG FR290A
REVISIONS								SHEET 1 OF 1