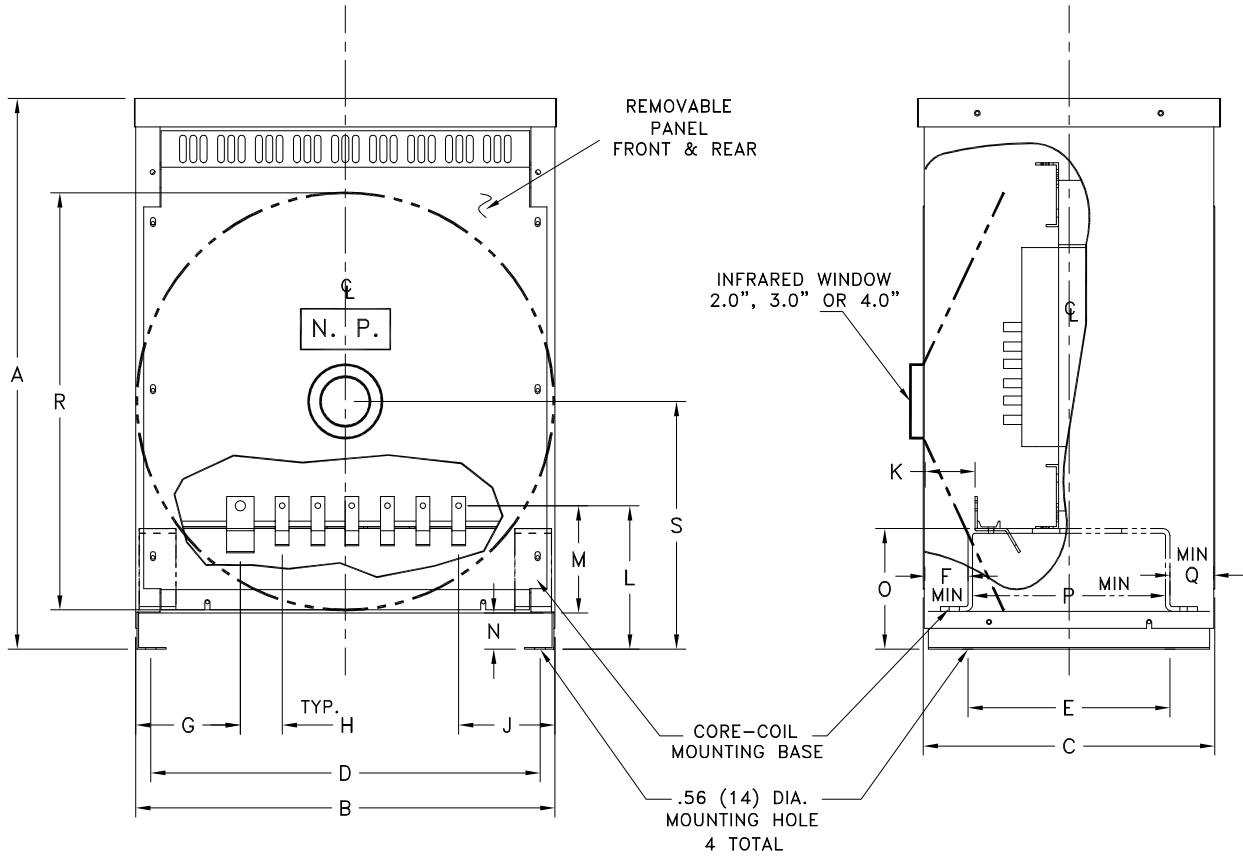


NOTES:

1. ALL UNITS ARE DESIGNED IN ACCORDANCE WITH APPLICABLE NEMA, UL, ANSI, AND IEEE STANDARDS.
2. DRY-TYPE VENTILATED, CLASS AA, NEMA TYPE 2 ENCLOSURE.
3. TRANSFORMERS ARE FLOOR MOUNTED.
4. 220°C CLASS INSULATION SYSTEM.
5. PAINT COLOR IS ANSI #61.
6. ALUMINUM UNITS HAVE ALUMINUM WINDINGS AND TERMINATIONS. COPPER UNITS HAVE COPPER WINDINGS AND TERMINATIONS.



DIMENSIONS IN inches (mm)

FRAME	A	B	C	D	E	F
FR912BW	30.00(762)	23.00(584)	16.50(419)	21.04(534)	11.00(279)	2.65(67)
	G	H	J	K	L	M
	5.70(145)	2.28(58)	5.25(133)	2.71(69)	7.82(199)	5.75(146)
	N	O	P	Q	R	S
	2.07(53)	4.50(114)	10.50(267)	2.65(67)	22.72(343)	13.50(343)

Rev1 - FEB/10

THIS DIMENSION DRAWING IS FOR REFERENCE ONLY. IT IS NOT TO BE REGARDED AS INDICATING THE EXACT DETAILS OF CONSTRUCTION.

PRODUCT CODE:		FEDERAL ID NO.:		DFTR J.C.SOTO	DATE 19/FEB/10	THE INFORMATION ON THIS DOCUMENT WAS CREATED BY EATON CORPORATION. IT WAS DISCLOSED IN CONFIDENCE AND IS ONLY TO BE USED FOR THE PURPOSE IN WHICH IT WAS SUPPLIED.		EATON	
				APPD E.ROBLES	DATE 19/FEB/10	TITLE DRY TYPE TRANSFORMER OUTLINE			
				S.O.		TYPE TRANSFORMERS			OUTLINE
REV	DESCRIPTION	DFTR	APPD	DATE	REVISION 01	G.O.	DWG FR912BW	SHEET 1 OF 01	
REVISIONS									