

Non Plug-In Switches


Contents

Overview 1
 Specifications 1
 Model Selection 2
 Dimensions 3

Cutler-Hammer® 10316 Type L Non Plug-In Limit Switches by Eaton's electrical business are sold as complete assembled devices only with a wide array of operating head configurations. All switches are single-pole 1N.O.-1N.C.

Approvals

- UL Listed
- CSA Certified

 **Unless otherwise noted, the products contained in this document are not designed or intended for use in human safety applications.**

Non Plug-In Limit Switches for Heavy-Duty Use



Product Features

- Side and top rotary, side and top push or wobble operation
- CW, CCW or CW and CCW operating modes are field convertible
- Double break-make snap action contacts, same polarity each pole
- Captive saddle clamp terminals accept up to #12 wire
- Head can be mounted in any of four discrete positions, intervals of 90°

Specifications

Description	Specification
Contact Rating	NEMA A600, R300 double break-make snap action contacts
Electrical Life	500,000 operations minimum
Mechanical Life	5,000,000 operations minimum at full load
Conduit Entrance	0.5" (12.7 mm) NPT
Material of Construction	Zinc die cast
Enclosure Rating	NEMA 1, 4, 13
Operating Temperature	-20° to 200°F (-29° to 93°C) ①
Approximate Shipping Weight	2 lbs



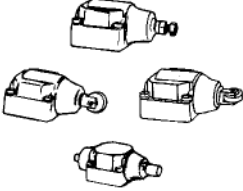
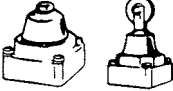
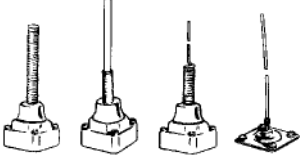
Electrical Data — Max. Contact Ratings, per Pole (Contacts must be same polarity when both circuits are used)


AC Volts	Current, Amperes			Volt Amperes		DC Volts	DC Current, Ampere
	Make	Break	Cont. Thermal Ratings	Make	Break		
NEMA A600, R300 Rating							
120	60	6	10	7200	720	125 250	.22 .11
240	30	3					
480	15	1.5					
600	12	1.2					

① Ranges below +32°F are based on absence of freezing moisture or water.

For Customer Service in the U.S. call **1-877-ETN CARE (386-2273)**,
 in Canada call **1-800-268-3578**.
 For Application Assistance in the U.S. and Canada
 call **1-800-426-9184**.

Model Selection — Complete Assembled Switches Single-Pole 1N.O.-1N.C.

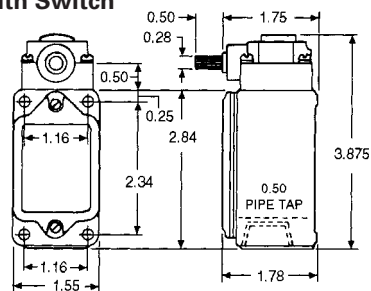
	Operating Characteristics	Operating Data — Nominal					Catalog Number
		Travel to Operate Contacts	Travel to Reset Contacts	Total Travel	Force to Operate Contacts	Minimum Return Force	
Side Rotary Operated  For Operating Levers, see PG.05C.04.TE	Standard	10°	4°	50°	3 in-lb	4.5 in-oz	10316H187
Top Rotary Operated  For Operating Levers, see PG.05C.04.TE	Clockwise	20°	12°	140°	1.1 in-lb	3 in-oz	10316H700
	Counterclockwise	20°	12°	140°	1.1 in-lb	3 in-oz	10316H701
Side Push Operated 	Adjustable Pushbutton	0.07 in (1.8 mm)	0.03 in (.8 mm)	0.29 in (7.4 mm)	4 lb	8 oz	10316H621
	Vertical Roller — 0.44 in (11.2 mm)	0.07 in (1.8 mm)	0.03 in (.8 mm)	0.29 in (7.4 mm)	4 lb	8 oz	10316H284
	Horizontal Roller — 0.44 in (11.2 mm)	0.07 in (1.8 mm)	0.03 in (.8 mm)	0.29 in (7.4 mm)	4 lb	8 oz	10316H285
Top Push Operated 	Pushbutton	0.04 in (1.0 mm)	0.02 in (.5 mm)	0.28 in (7.1 mm)	4 lb	8 oz	10316H281
	Roller — 0.44 in (11.2 mm) Dia.	0.04 in (1.0 mm)	0.02 in (.5 mm)	0.28 in (7.1 mm)	4 lb	8 oz	10316H283
	Roller — 0.75 in (19.1 mm) Dia.	0.04 in (1.0 mm)	0.02 in (.5 mm)	0.28 in (7.1 mm)	4 lb	8 oz	10316H577
Wobble Operated  For Wobble Operators, see PG.05C.04.TE	Spring	10°	6°	15°	1 in-lb	2.4 in-oz	10316H299
	Nylon Rod	10°	6°	15°	2 in-lb	2.4 in-oz	10316H296
	Wire	10°	6°	15°	2 in-lb	2.4 in-oz	10316H484
	Cat Whisker	15°	5°	30°	0.63 in-lb	1.7 in-oz	10316H341

 Fast turn product with typical one business day lead-time to shipment.

August 2007

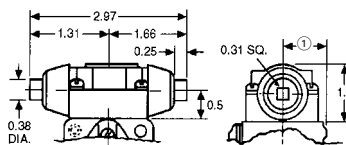
Approximate Dimensions in Inches or Inches (mm)

Side Rotary Operated Head with Switch

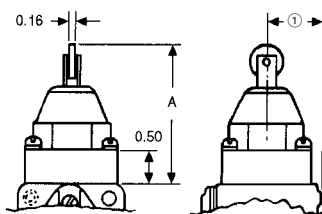


(2) 0.203 DIA. HOLES FOR FRONT MTG.
(2) 10-32 TAPPED HOLES 0.375 DEEP FOR REAR MTG.

Side Push Maintained Contact



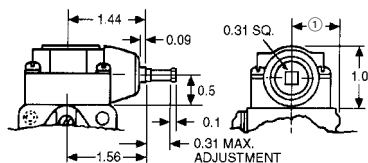
Top Push Roller



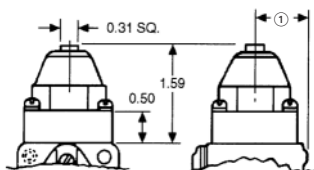
Dimension "A"

With 0.44 (11.2) Diameter Roller	2.03 (51.6)
With 0.75 (19.1) Diameter Roller	2.34 (59.4)

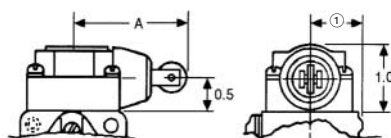
Side Pushbutton, Adjustable



Top Pushbutton



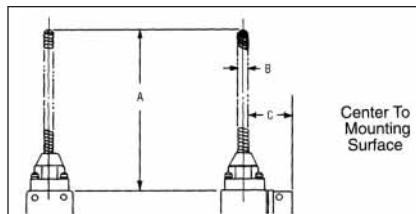
Side Push, Vertical Roller



Dimension "A"

With 0.44 (11.2) Diameter Roller	1.78 (45.2)
With 0.75 (19.1) Diameter Roller	2.09 (53.1)

Wobble Operators



Type	A	B	C
Wobble Spring	5.44 (138.2)	0.31 (7.9)	0.81 (20.6)
Wire Wobble Stick	12.5 (317.5)	0.08 (2.0)	0.81 (20.6)
Nylon Wobble Stick	4.5 (114.3)	0.25 (6.4)	0.81 (20.6)

① Dimension from centerline of head to mounting surface is 0.78 inches (20 mm).