



Better together

How Brightlayer Data Centers suite
software adds value to RMM and
BMS solutions



Powering Business Worldwide

Peanut butter and jelly. Chips and dip. Cereal and milk. Some things just go better together – like integrating software from Eaton's Brightlayer™ Data Centers suite with your existing remote monitoring and management (RMM) or building management system (BMS) software.

Each software solution offers unique advantages



BMS: Encompasses the mechanical elements of systems, using automation to gain more control over equipment including power, heating and cooling



Data Center Performance Management (DCPM): Provides accurate, actionable data on critical data center parameters, enabling better planning for, and utilization of, space, power and cooling capacity



Distributed IT Performance Management (DITPM): Enables you to manage and control assets such as power distribution units (PDUs) and uninterruptible power supplies (UPSs) at remote locations – from retail and office space to healthcare and educational facilities



Electrical power monitoring system (EPMS): Offers real-time water, air, gas, electricity and steam (WAGES) monitoring and power analysis to reduce operating costs, increase safety and avoid outages



RMM: Allows real-time, remote control and management of multiple endpoints from a single console, helping to minimize downtime, improve security, reduce maintenance and boost productivity



Integration increases value

If you're using an RMM or BMS solution on its own, it's probably not reaching its full potential because you can't fully leverage its capabilities across your operation. By integrating it with Eaton's Data Center Performance Management or Distributed IT Performance Management software, you add the ability to monitor and control critical power equipment such as PDUs and UPSs. So when a UPS goes offline, Eaton's software notifies you via the RMM or BMS system you're already using for everything else – creating a single management solution that delivers comprehensive, real-time data and insights that enable you to respond faster to environmental conditions and outages.

These aggregate gains help you



Extend equipment lifetime with more effective utilization of your power, space and cooling resources



Increase efficiency and lower costs by minimizing equipment downtime with proactive preventative maintenance and meaningful real-time alerts

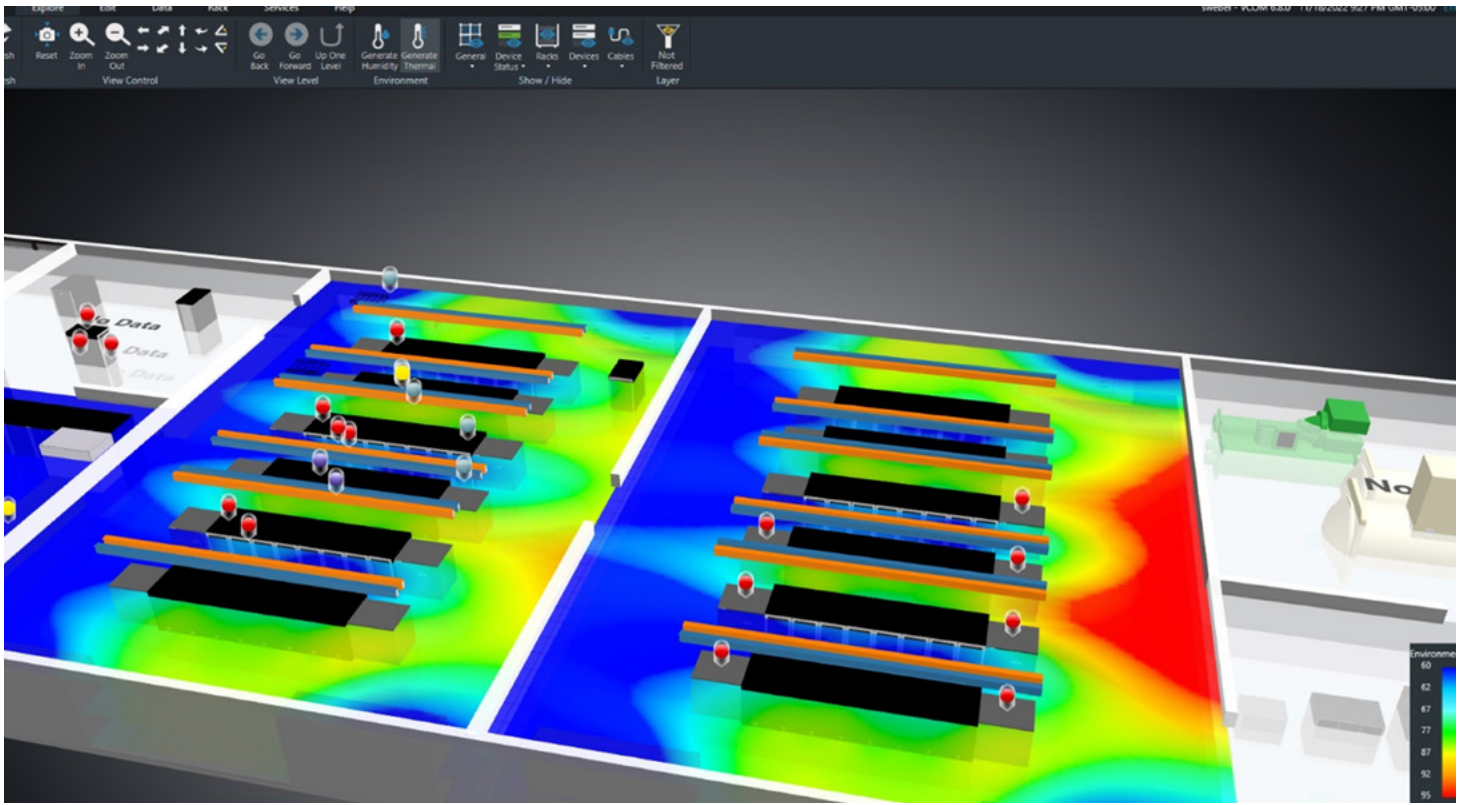


Improve capacity planning and utilization with reports for power usage effectiveness (PUE), what-if scenarios and root-cause analysis



Gain actionable insight into equipment performance with reports, trend charts and dashboards





3-D thermal imagery available in Eaton's Data Center Performance Management software

BMS + DCPM + EPMS

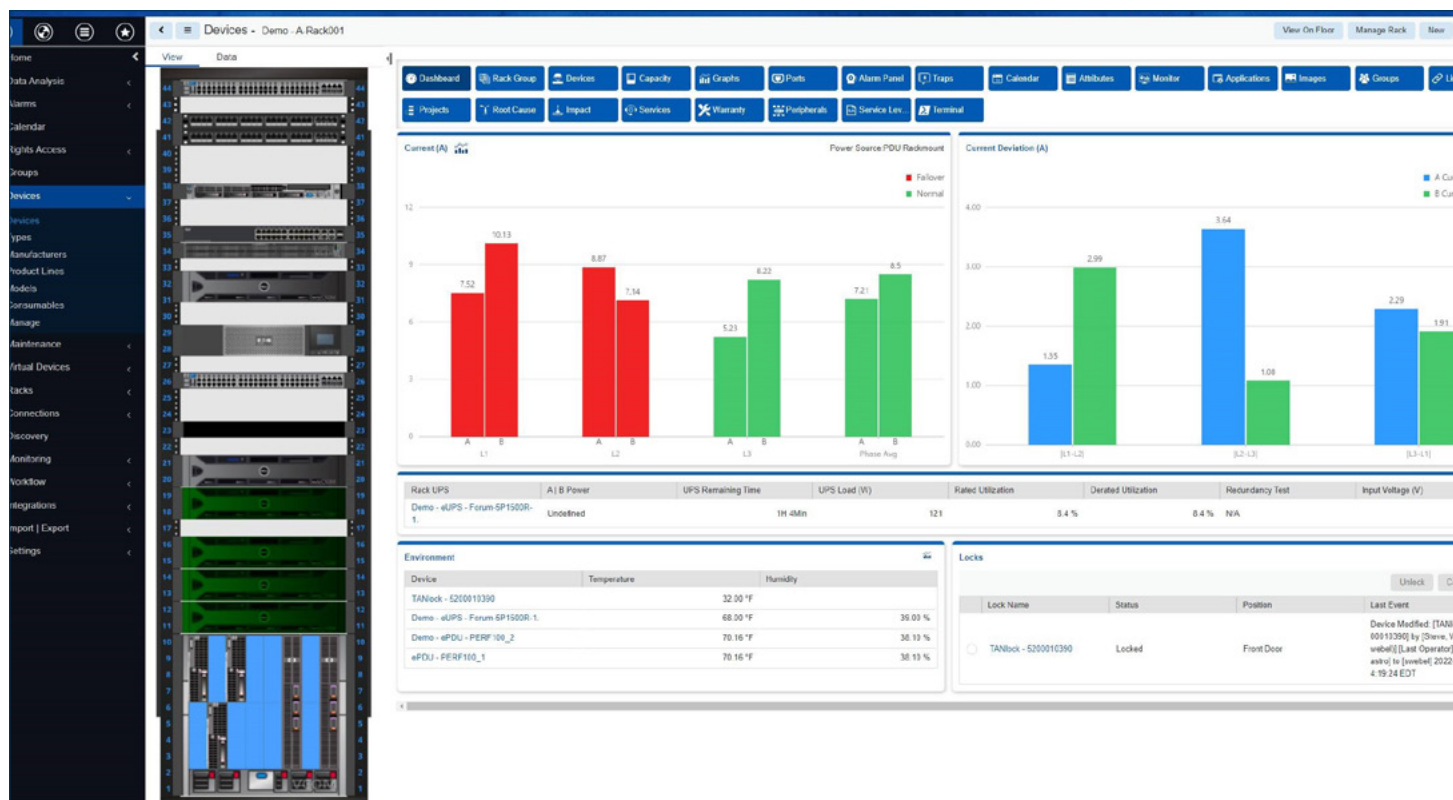
Since data center management software monitors IT equipment like servers and PDUs, BMSs control and automate building systems like security, lighting, fire and HVAC, and EPMS solutions provide deep insights into power quality, enable electrical system root-cause analysis with detailed one-line diagrams and capture events at high-resolution, integrating the three provides you with full visibility into your facility and operations. You're able to see your gray space and white space in a single application so you can quickly optimize a wide range of critical systems in your data center – including water, air, gas, electricity, steam and your IT equipment.

By adding Eaton's DCPM and EPMS software to your BMS, you can:

- More effectively plan for future capacity, allowing informed operational management with projects and work orders
- Reduce power utilization with PUE trend charts for one or more locations – from a single rack to an entire facility
- Know what's happening across your data center – from insight into specific devices to entire systems – so you can act quickly when the unexpected happens
- Gain visibility into complex IT components with rack elevation reports
- Automate manual processes to increase staff efficiency
- Use power quality analysis tools to identify and resolve power anomalies throughout your facility
- View detailed electrical one-line diagrams that provide quick insight into the status of your electrical distribution system

**Learn more about our DCPM software
at Eaton.com/DCPM**

**Learn more about our EPMS software
at Eaton.com/EPMS**



Rack dashboard view using Eaton's Distributed IT Performance Management software

RMM + DITPM

While you may be using a traditional RMM to monitor IT equipment like servers and network gear, chances are your software doesn't extend to critical power infrastructure equipment like UPSs and PDUs, leaving you vulnerable to costly downtime. Adding Eaton's Distributed IT Performance Management software to your RMM enables you to:

- Know what's happening across your distributed power infrastructure – both racks and power devices – with real-time alerts and alarms.
- Quickly troubleshoot and resolve equipment issues to extend equipment lifespan by remotely controlling all of your rackmount PDU outlets and rackmount UPS load segments – regardless of device vendor. This includes gracefully shutting down and restarting equipment in the event of a power issue.
- Optimize your operation with actionable intelligence on equipment performance via detailed reports, trend charts and dashboards that provide deep insights into power utilization, alarm frequency, circuit traces and more.

Learn more about our Distributed IT Performance Management software at Eaton.com/DITPM



The time is now

Connect with an Eaton representative to request a demo or learn how the Brightlayer Data Centers suite can help you take your operations to the next level.

Learn more at
Eaton.com/BrightlayerDataCenters

Eaton
1000 Eaton Boulevard
Cleveland, OH 44122
United States
Eaton.com

© 2023 Eaton
All Rights Reserved
Publication No. BR152091EN
March 2023

Changes to the products, to the information contained in this document, and to prices are reserved; so are errors and omissions. Only order confirmations and technical documentation by Eaton is binding. Photos and pictures also do not warrant a specific layout or functionality. Their use in whatever form is subject to prior approval by Eaton. The same applies to Trademarks (especially Eaton, Moeller, and Cutler-Hammer). The Terms and Conditions of Eaton apply, as referenced on Eaton Internet pages and Eaton order confirmations.

Eaton is a registered trademark.

All other trademarks are property of their respective owners.