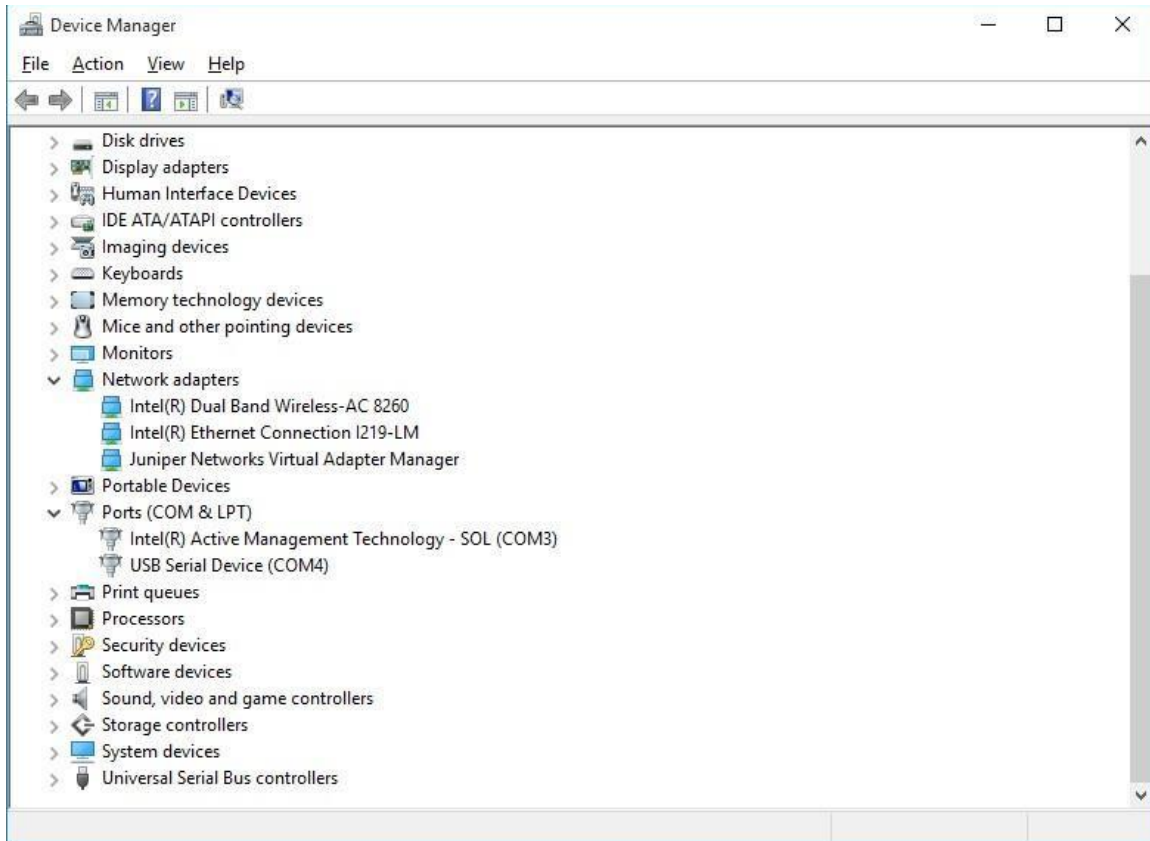


PX USB Signed Driver for Windows Installation and Troubleshooting

The Windows device driver for the Power Xpert Gateway(PXGX, PXGMS, PXGX-PDP) card will allow the UPS network card to be detected as a Network device when you plug into the USB port with a cable attaching a PC. In some Windows installations the PX card may be detected as a Serial Com port. To resolve this issue, you must manually install the device driver.

With the USB cable connected to a PX card, open Device Manager and expand the Network adapters and Ports (COM & LPT) sections.

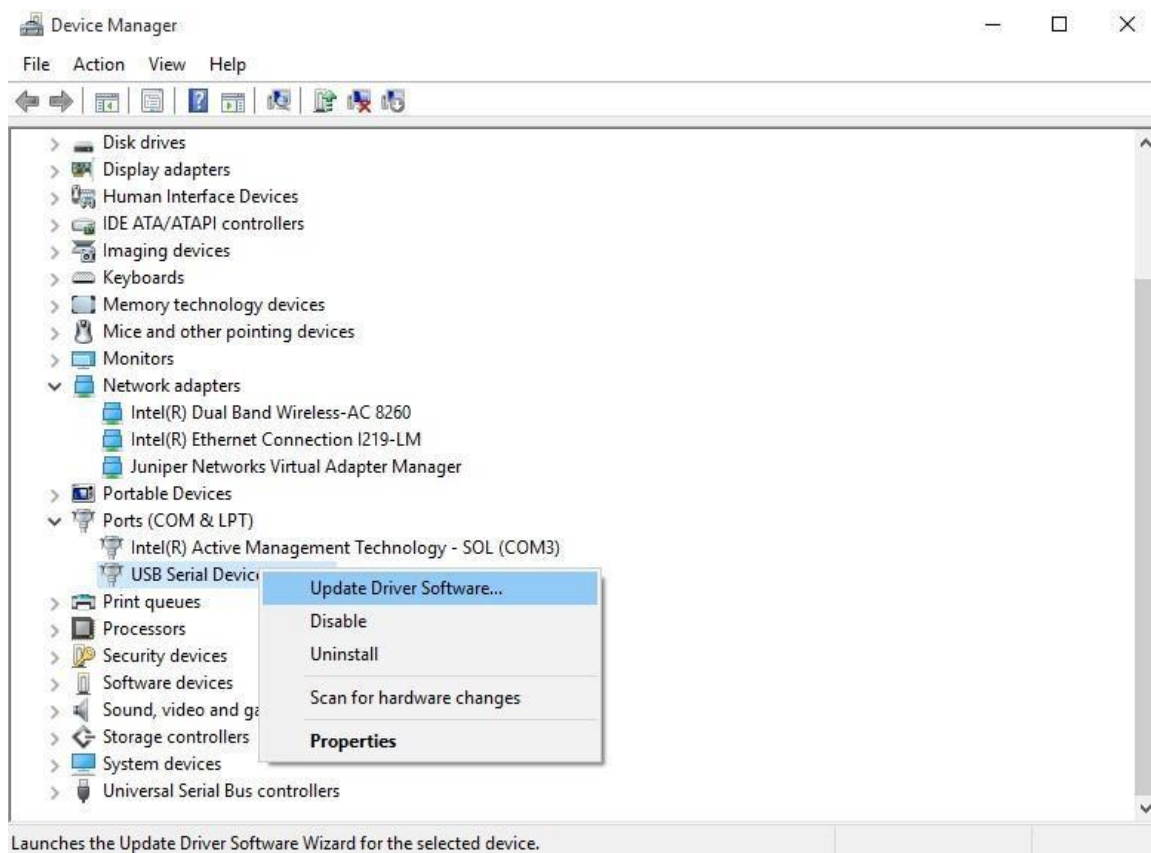


Find the incorrect device in Device Manager. In this example, it is USB Serial Device (COM4). Unplug and replug the cable to the PX card to make sure you have the correct device.

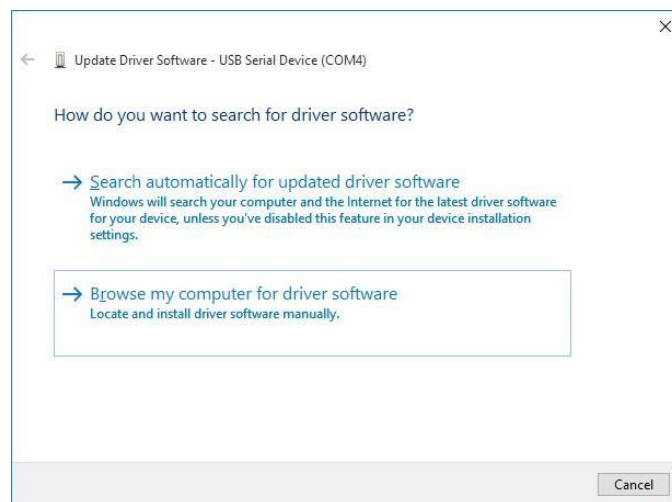
Extract the contents of PX USB Signed Driver.zip to a folder on your computer. The Downloads folder is a good choice.

Page 1 of 5

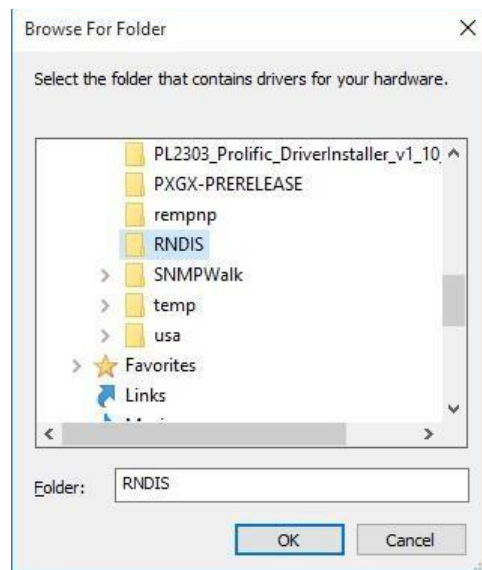
Right click on the incorrect device and choose “Update Driver Software...”



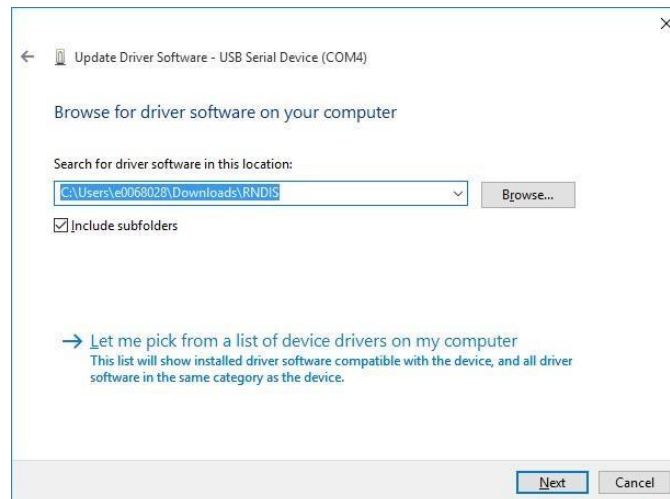
Choose “Browse my computer for driver software.”



Browse to the folder that contains the new driver.

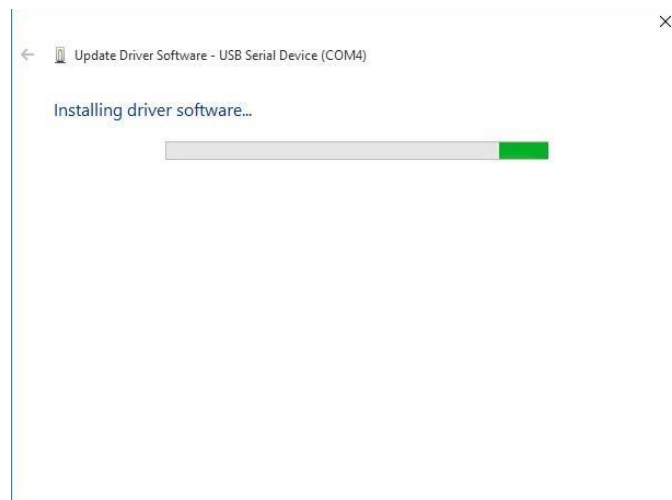


Click OK.

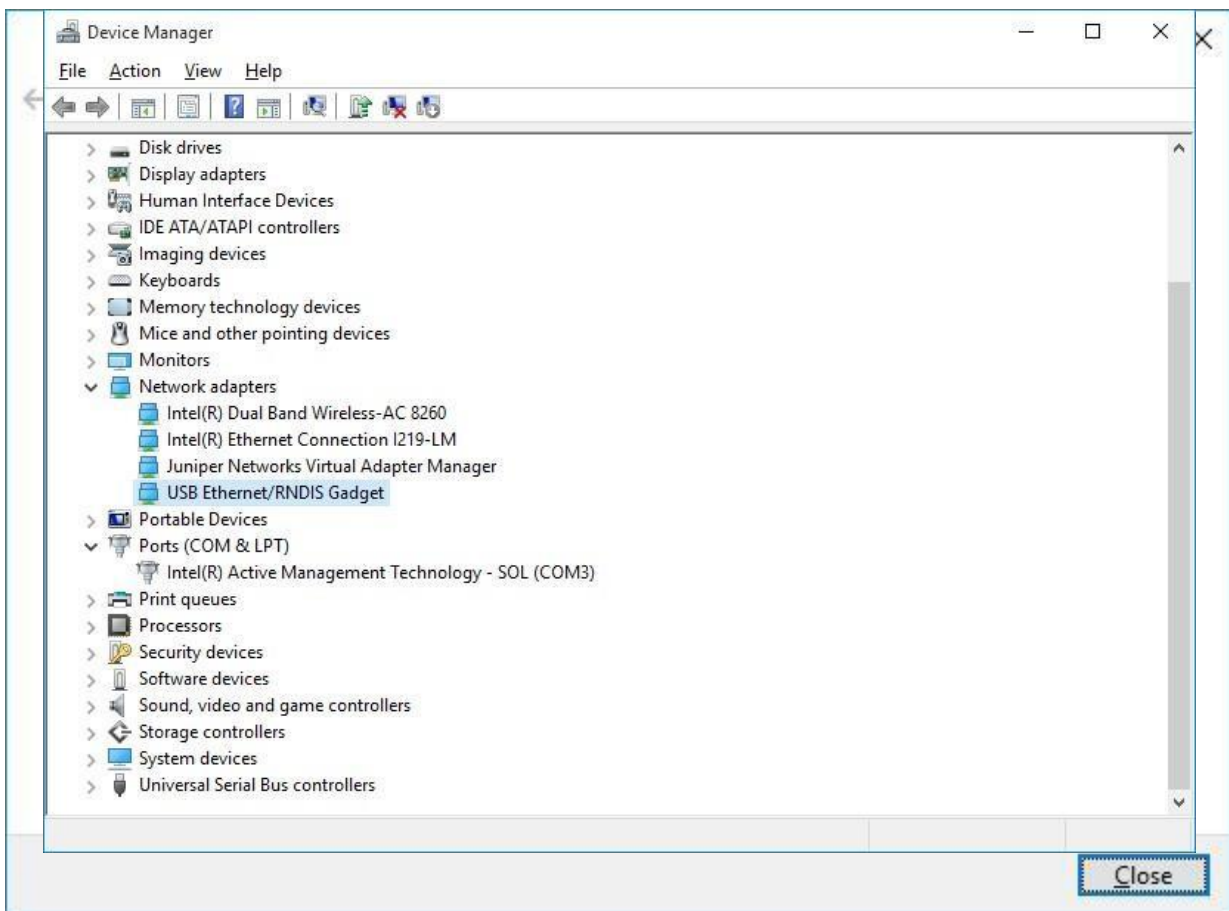


Click Next.

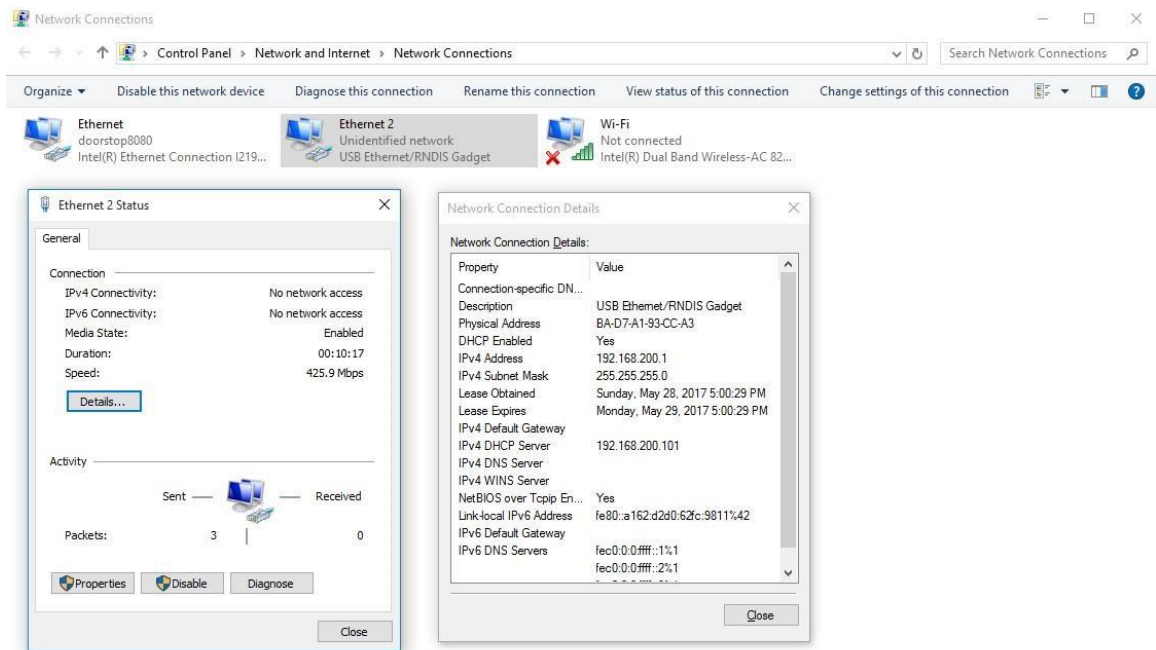
The driver should update. This process typically takes 30 seconds or less.



After the driver update is complete, observe that the COM port is gone and a USB Ethernet/RNDIS Gadget is in the Network Adapter section.



Select Control Panel, Network and Sharing Center, Change Adapter Settings. Select the USB Ethernet/RNDIS Gadget, then "View the status of this connection. Click Details. Verify that the IPv4 address is 169.254.0.101.



3 items 1 item selected



Open a web browser and open the PX web page at <https://169.254.0.101>. Enter admin for the user name and the MAC(no colons) for x-slot PXGX-UPS and PXGX-PDP, and serial number of card for PXGMS. If the password has been changed from the default, use the unique password.

