

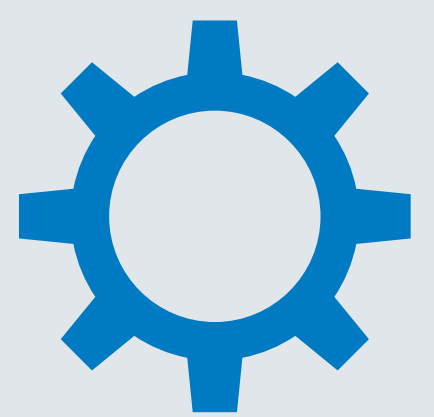
Eaton 9390 UPS

Service Life Extension Program (SLEP)

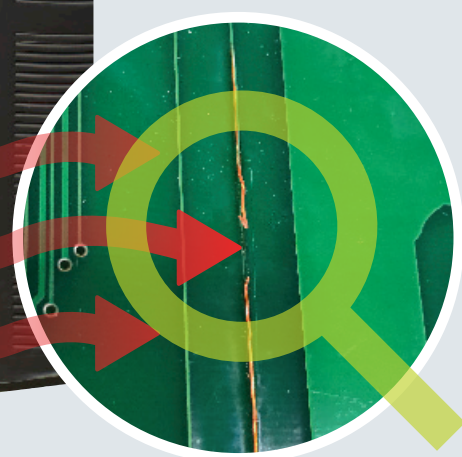


Eaton can install all new and improved electronics inside the shell of your existing UPS.

Manufactured from 2004-2019, the **9390** was Eaton's first modular UPS. With proper maintenance, it can last more than 10 years.

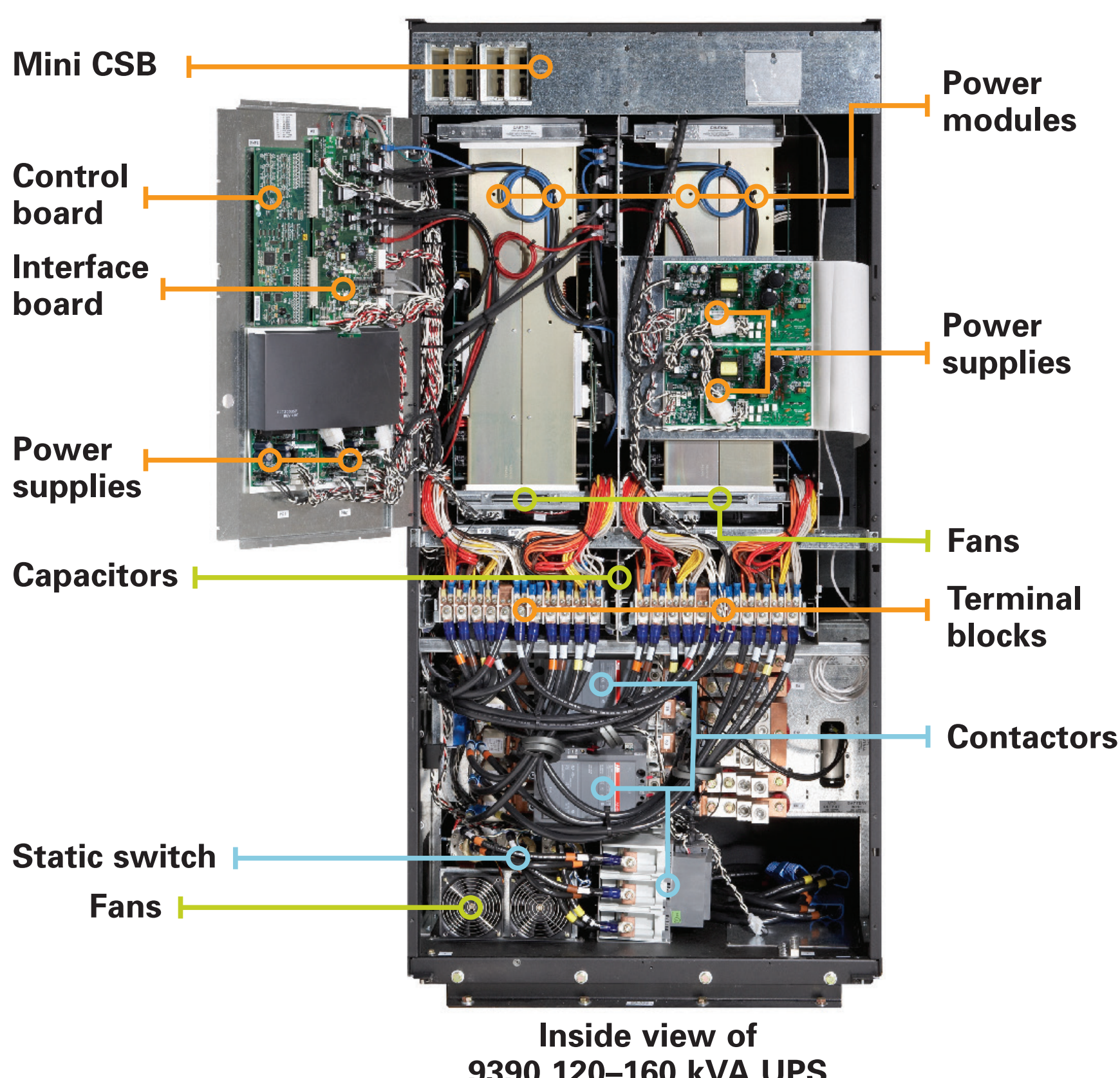


However, all electronics have an increasing risk of **wear-out failure** over time as components are susceptible to heat, humidity, and dust/dirt collection.



For example, see this close up photo of an open circuit on a 13-year-old 9390 printed circuit board. The trace opened due to over-current as a result of a compromised electronic component, switching the UPS to bypass where the critical load is unprotected.

The Eaton 9390 SLEP is for customers with 10+ year old 9390s who want to **RESET** the clock and get 10 more years of service life.



Additional services included:

- Cleaning of contactors and wiring (replacement as necessary)
- UPS system calibration, functional testing and reporting
- 1-year warranty (7x24, 8 hour response, parts and labor)
- PredictPulse Remote Monitoring (1-year subscription)
- 10-year minimum entitlement to purchase full-service coverage

Optional services:

- ESS Upgrade to 99% efficiency (as applicable)
- kVA Upgrade for additional capacity
- Full onsite commissioning/load bank testing services

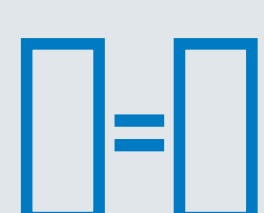
Color key:

- Replaced during SLEP (electronics)
- Optionally replace at same time (consumables)
- Stays (replacement not necessary)

There are numerous benefits to this program, including:



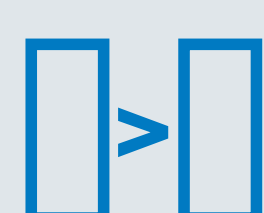
Quick implementation /
minimal downtime
(1 day)



No change to
existing footprint



No electrical
installation



Reuse existing
accessories &
battery cabinets



Supports corporate
sustainability
objectives



Interested in this new program?

Learn more and contact Eaton at
[Eaton.com/UPSservices](https://www.eaton.com/UPSservices)