

Eaton 9395XR UPS

Eaton 9395XR UPS

Complete modular data center solution

Lithium-ion Compatible



Lithium



Energy Aware



Modular 125kW



Efficiency >97%



EATON

Powering Business Worldwide

9395XR Features and Benefits

The Eaton 9395XR UPS combines unprecedented efficiency and reliability with an eye-catching design. A space-saving, scalable and flexible device that's as easy to deploy as it is to manage. It's the perfect three-phase white or grey space solution for today's data center.

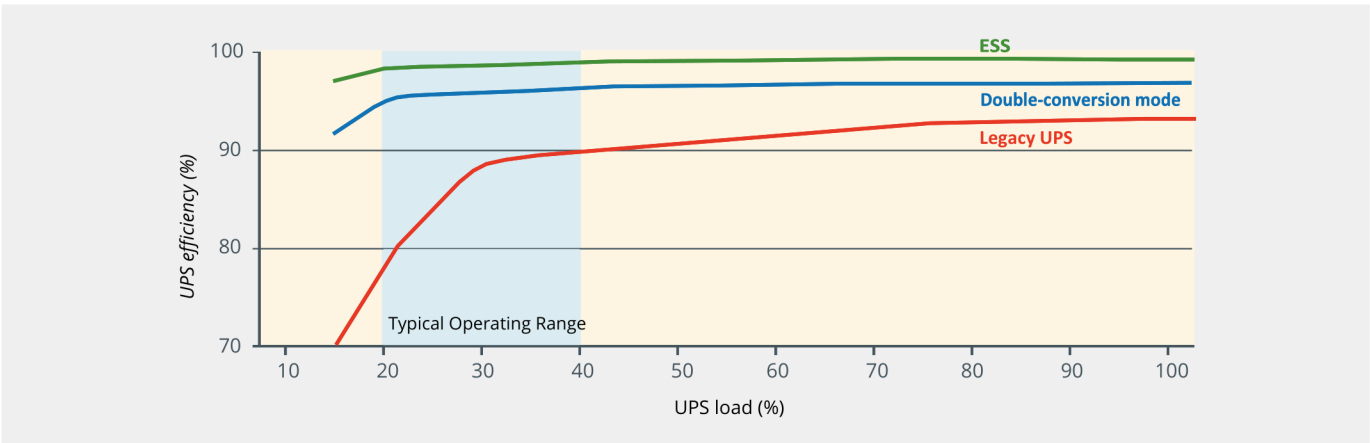


Extra Low TCO (Total Cost of Ownership)

Conserves valuable data center floor space with its compact footprint and internal redundancy design. Reduces cost and unexpected future growth risks with its vertical scalability, enabling you to scale as you grow. Reduces power and cooling OPEX through industry-leading energy-efficiency.

- **99% efficiency with Energy Saver System (ESS)**
- **>97%** efficiency in double-conversion mode

The 9395XR's vertical scalability, internal redundancy and compact footprint design



Your UPS cost will be recovered in 3 years' time thanks to the significant energy savings with Eaton ESS/ double conversion efficiency.

Calculate your 9395XR savings with ESS at [Eaton.com/ESS](https://www.eaton.com/ESS).

Designed for Data Center requirements

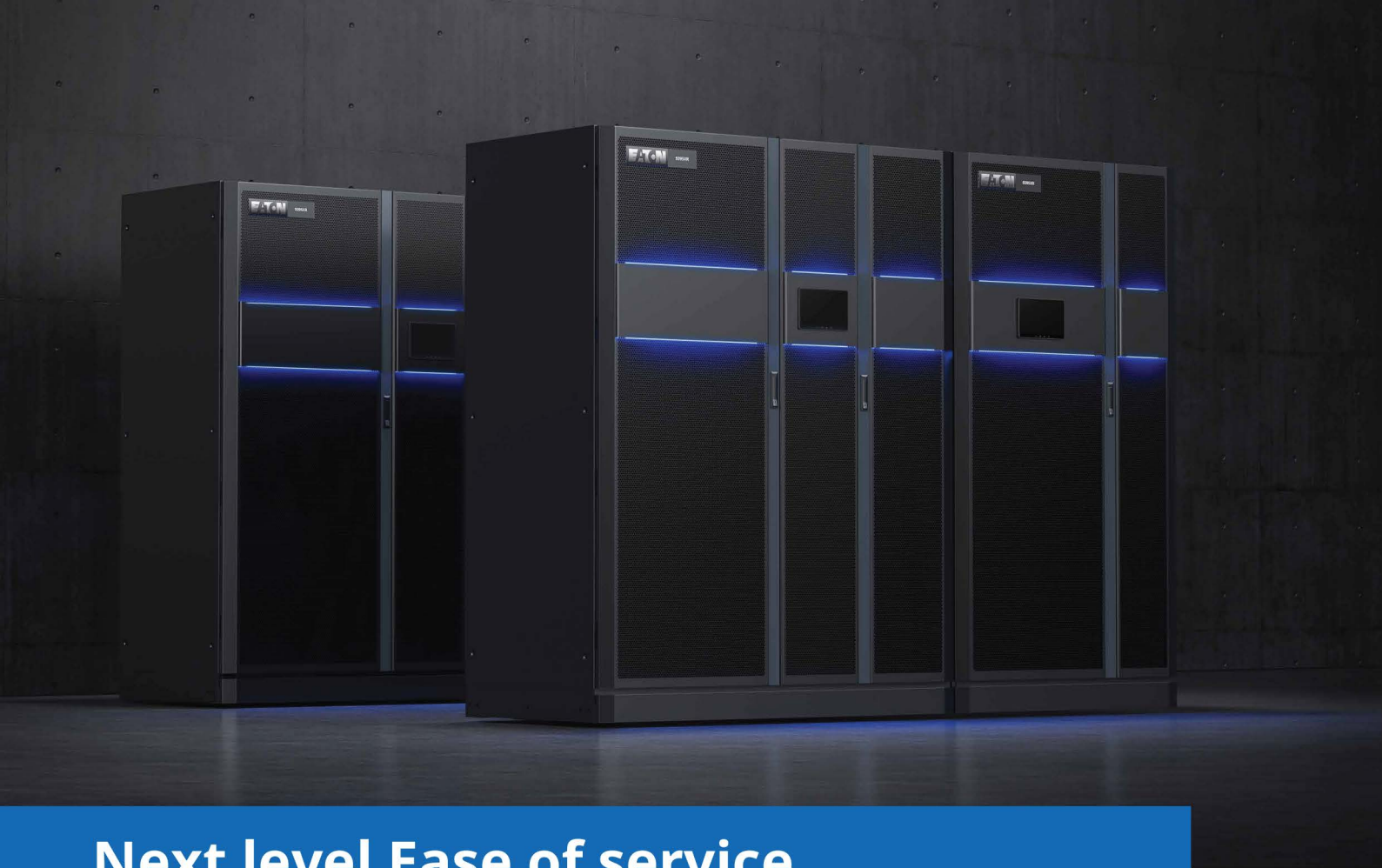


Compact Size

1.5MW only takes 1.44m² space. Halves the foot print of 93PR 1.2MW. Over 1MW per square meter sets new industry standards.

- A Cable entry**
Top and bottom cable entry available
- B Communications and connectivity**
 - Built-in device and host USB
 - Five alarm inputs and dedicated EPO
 - Alarm relay output
 - Three connectivity/ communication slots
- C 125kW HOTSWAPPABLE power modules**
Hot swap UPM can be inserted or removed when UPS is running to ensure service continuity.
- D Flexible Exhaust options**
Support both top and rear exhaust. Can be placed against wall when top exhaust installed.
- E DC start controls**
Available in each power module
- F Redundancy and speed controllable fans**
- G 7" Color display**





Next level Ease of service



On-line replaceable **UPM** , MTTR as low as 5 mins



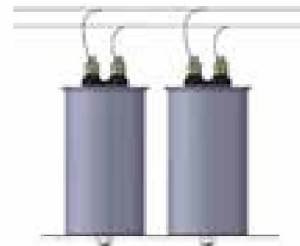
Enhanced efficiency and reliability
with SIC MOSFET Module



Robust components using **oil-filled capacitors** &
Full SiC MOSFET modules



Perfect integration with Lithium battery, compatible
with multiple **Lithium-ion** BMS



Long life oil-filled capacitor

Easy management



Provides easier access to detailed
status information through
its large, user-friendly LCD
touchscreen interface

With the 9395XR's graphical LCD
interface you can check its status
on energy savings, battery time,
outage tracking, load profiling and
much more.

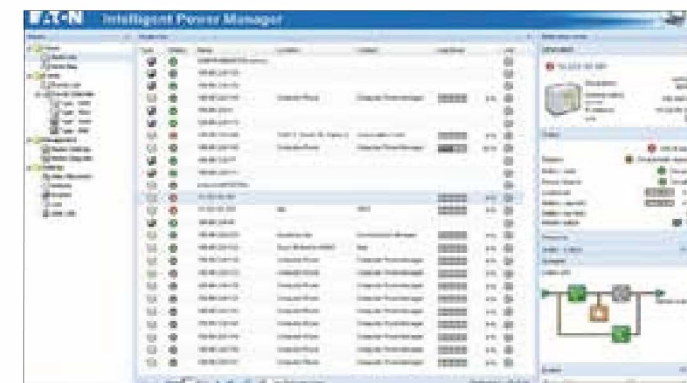
The green/yellow/red LED light-
bars make system status visible
from a distance in data centers.

Integrates with the leading virtual
platforms through its full suite
of power management and
connectivity software

Designed for the most advanced
IT environments, the 9395XR
supports optional communication
cards that allow remote access via
the HTTP(S), SNMP, MODBUS

TCP/IP, Modbus RTU and BACnet
IP protocols. In addition, Eaton's
Power Xpert® software and
Intelligent Power® Software Suite
give you all the tools you need to
manage power devices in your
physical or virtual environment.
Learn more at Eaton.com/intelligentpower.

Red light bars showing alerts on system. Yellow light bars indicate battery and
bypass status.



Intelligent Power Manager® (IPM) is a world class power management
software platform. It seamlessly monitors power and environmental conditions
while providing business continuity for workloads using VMware®, Citrix® and
Microsoft® platforms. IPM also optimizes power and environmental conditions
for data centers using OpenStack® or HPE OneView®.

Connectivity options:

Power Xpert Gateway Minislot UPS
Card
Industrial Relay Card - MS
Industrial Gateway Card
Gigabit Network Card (Network-M3)
SNMP



Connectivity Cards

Lithium-ion battery

Power on demand

Eaton's lithium-ion battery systems provide a reliable and flexible solution that ensures 24/7 system uptime while delivering significant total-cost-of-ownership (TCO) savings. Capable of providing mega-watts of power in a small footprint, this battery solution comprises of lightweight battery strings designed to seamlessly connect to a Power Xpert™ 9395XR UPS.

Why lithium?

Lithium-ion chemistry demonstrates superior characteristics in UPS applications, this results in high energy density, long life, flexible installation, improved cycle life and a lower TCO.

Backup battery runtimes

Contact Eaton for backup times and configurations. A wide range of runtimes from 3 minutes to an hour + are available.

EnergyAware upgrade

With Eaton's EnergyAware kits upgrade, UPS with lithium battery can do much more beyond UPS.

Management and monitoring system

The lithium-ion battery integrates a powerful battery management system (BMS), providing cell protection (temp, current, over/under voltage), cell balancing, state of charge and health and alarms/ reports.

Protection:

The BMS processes critical parameters such as voltage levels, temperature, and current at the module and solution levels. Abnormal conditions (warnings and alarms) are quickly detected and, if necessary, the BMS will protect the system from damage by disconnecting the affected battery.

Performance optimization:

The BMS incorporates cell and module balancing controls. This function optimizes the voltages of each module to maximize performance and increase service life.

Benefits of lithium-ion

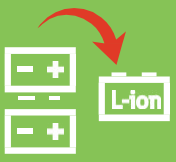
Save money

10 year performance warranty
15 year design life

\$


Save space

up to 8x cycle
40% smaller
60% lighter



Reduce risk

24/7 BMS monitoring



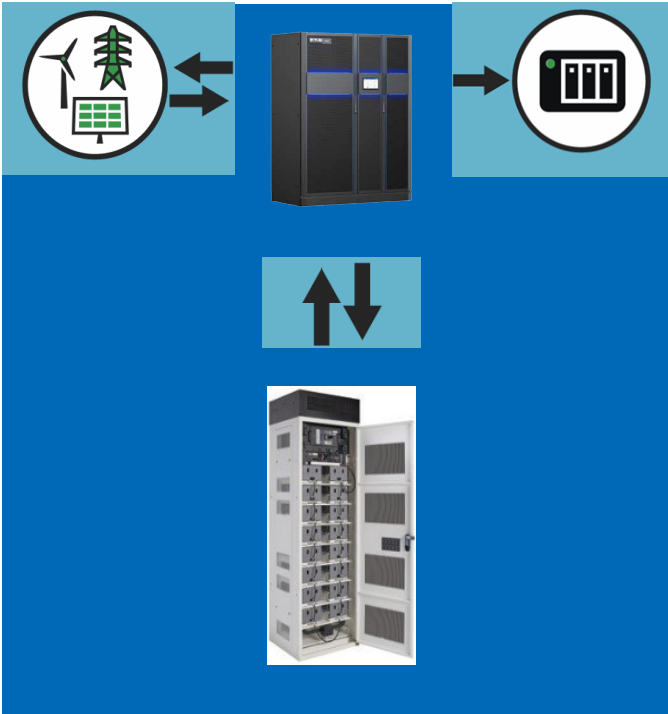
Demand charge management
User avoids demand charges by discharging at peak times.

Time-of-use optimization
Shifts energy consumption to avoid peak energy usage.

Demand response
Utility company requests reduction in power usage.

Frequency regulation
Charge or discharge battery on command to stabilize the grid.

Aggregation services
Manage multiple assets in a building or campus to work as a single entity.



For more information, please visit
Eaton.com/Lithium
Eaton.com/EnergyAware

EATON 9395XR UPS TECHNICAL SPECIFICATIONS*

Power modules		
Power offering (kW)	125kW UPM	
Frame options		
Frame Offering	1500 / 1800kW	
General characteristics		
Efficiency with Energy Saver System (ESS)	Up to 99%	
Efficiency with double-conversion mode	>97%	
Parallel capability	4x parallel, maximum 6MW	
Cold start	Supported	
Softstart	Rectifier ramp up, compatible with generator, ramp up rate configurable	
Input characteristics		
Voltage	380/400/415V	
Voltage range	301~478V L-L, 175~276V L-N	
Frequency range	50/60 Hz	
Power factor	> 0.99	
Input current distortion	< 3% @ 100% load capacity	
Battery		
Battery Type	Lithium, VRLA, Ni-Cad	
Charging method	BMS, ABM or constant float charge	
Battery Voltage	360-640 Vdc	
Battery Connection	Support common battery	
Output		
Voltage	380/400/415V 4 Wires, 3 Wires	
Frequency range	50/60 Hz	
Regulation	±1% steady state	
Voltage THD	< 1% (100% linear load), < 3% (non-linear load)	
Overload	125% 10 mins	
Certification		
Safety	IEC62040-1	
EMC	IEC62040-2	
Performance	IEC62040-3	
Certificate	CE	
Optional accessories		
<div><div><ul style="list-style-type: none">• SNMP Card• X-Slot Modbus RTU Card• INDRELAY-MS Card</div><div><ul style="list-style-type: none">• Network-M2• INDGW-M2• PXGMSUPS Card</div><div><ul style="list-style-type: none">• External Sync Control Box• Lithium battery cabinet• Top exhaust kits</div></div>		
UPS dimensions (mm)		
	1500kW	1800kW
Height	2069	2069
Depth	865 (rear exhaust), 1100 (top exhaust)	865 (rear exhaust), 1100 (top exhaust)
Width	1600	2400
UPM dimensions (mm)		
Height	173.4 (4U)	
Depth	650	
Width	589	
Weight (kg)		
UPM	50	

* Due to continuous improvement, specifications are subject to change without notice.

Eaton, ABM, Intelligent Power Manager, Power Xpert are registered trademarks.

All other trademarks are property of their respective owners.

Learn more at
Eaton.com/9395XR



Eaton Electric (Singapore) Pte Ltd
100G Pasir Panjang Road
#07-08 Interlocal Centre
Singapore 118523
Eaton.com/SG

© 2024 Eaton
All Rights Reserved
Printed in Singapore
BR.E9395XR.SG.0620
May 2024

Eaton is a registered trademark of Eaton Corporation.

All other trademarks are property of their respective owners.

Follow us on social media to get the latest product and support information.

