



Eaton Tripp Lite series pure sine wave rack/tower cloud-connected line-interactive UPS

Reliable power protection for sensitive electronics

With pure sine wave output power, this Tripp Lite series rack/tower cloud-connected line-interactive (AVR) UPS offers high-quality protection for the most sensitive electronics. Available in 750VA, 1000VA and 1500VA models, this versatile UPS can be used as a tower, placed horizontally on a desktop or mounted in a rack with use of a rack-mount kit (sold separately). It provides reliable battery backup for a variety of electronics, including test and measurement equipment, data recording equipment, high-end network equipment and servers.

Cloud-based remote monitoring

Remote monitoring and management: Allows you to oversee and control UPS systems from anywhere, ensuring timely interventions and adjustments.

Brightlayer-powered remote management: Included cloud-based remote monitoring software allows easy monitoring, control and management of any size deployment from anywhere via mobile app or web browser.

Integrated Ethernet port: Built-in RJ45 Ethernet port connects the UPS to the Internet, enabling cloud connectivity out of the box for enhanced monitoring and management.

Advanced data analytics: Provides insights into power usage and performance trends to help optimize operations and reduce costs.

Improved uptime: Ensures continuous operation by minimizing downtime through proactive monitoring and quick issue resolution.

Cost-effectiveness: Features built-in cloud capabilities with remote monitoring software included at no additional cost.

Applications

Office and network environments: Protect high-end workstations, switches, routers and other critical devices from power disturbances.

Laboratories: Protect sensitive electronic equipment like data recorders, oscilloscopes and high-end workstations with pure sine wave power.

Network closets: Ensure continuous operation of servers, storage systems and networking equipment.

Power protection for IT equipment

Pure sine wave power: Provides maximum stability and compatibility with sensitive equipment.

Network-grade power protection: Protects sensitive electronics with advanced surge protection, voltage regulation and battery backup.

Reliable battery backup: Keeps equipment running during short outages, provides time to save work in progress and allows safe shutdown of equipment during longer outages.

Convenient power management

Switchable load banks: Each load bank can be switched on/off or cycled remotely, reducing the need for on-site visits.

Main outlets (1000VA and 1500VA models): Dedicated, non-switchable outlets remain continuously on whenever the UPS is operational, ensuring a reliable power supply to critical devices.

Simple and efficient operation

Energy efficiency: Optimizes power usage, reducing energy consumption and operational costs while maintaining performance.

Scalability: Easily adapts to growing business needs, allowing seamless integration of additional units as needed.

Ease of use: Simplifies management with user-friendly interfaces and automated features, making it accessible for all users.

User-friendly design: Supports vertical or horizontal placement on desktop or floor. The rotatable LCD interface provides quick access to critical information.

Optional rack-mount kit: The pure sine wave UPS mounts in 2U of rack space in 2- or 4-post racks with the RKTRYPSC rack-mount kit (sold separately).



Powering Business Worldwide

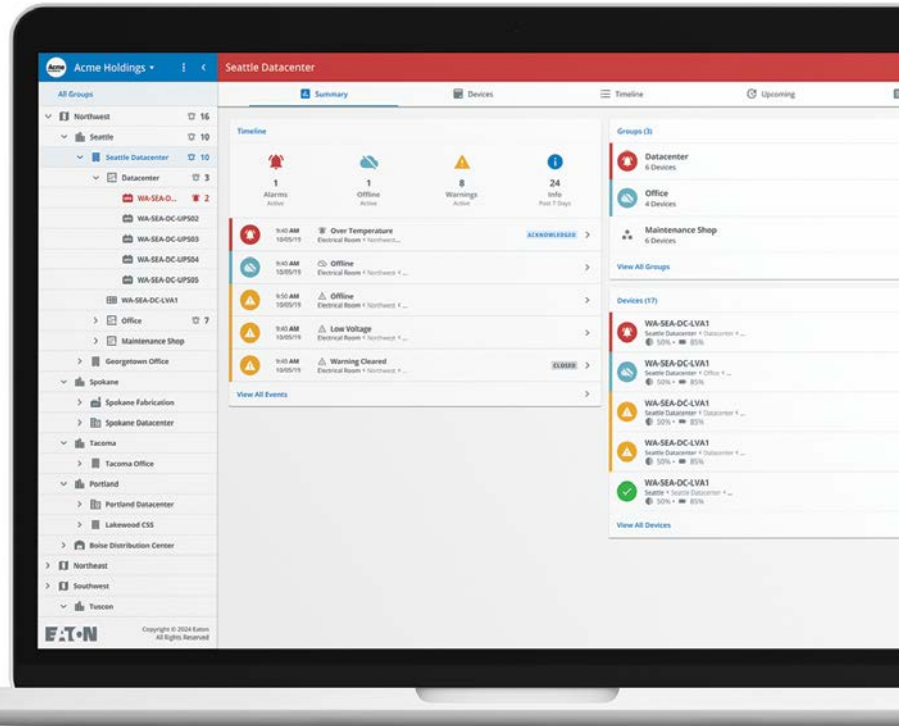
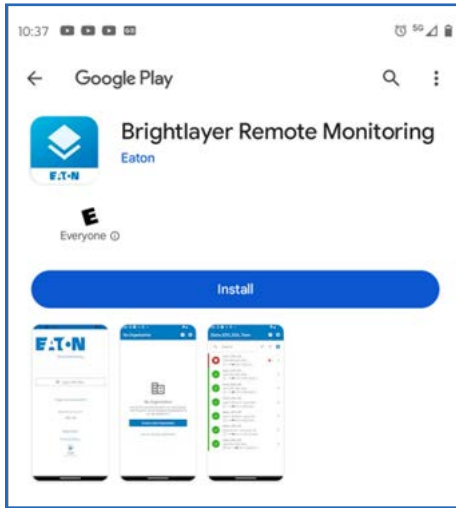
Cloud-based remote monitoring from anywhere, anytime

The Tripp Lite series cloud-connected line-interactive UPS includes remote monitoring software with an intuitive dashboard that is accessible from a mobile app or web browser. Cloud connectivity enables efficient setup, deployment and management of multiple UPS systems across multiple locations.

Powered by
Brightlayer

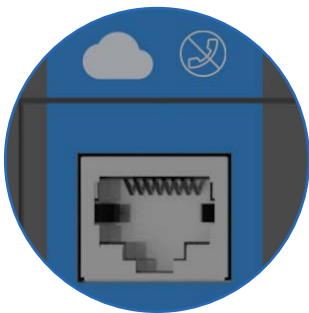
Cloud-connected UPS enhanced with remote monitoring software

Eaton's cloud-based remote monitoring dashboard offers convenient setup, control and management of a single UPS or a larger deployment. Receive alerts, push configurations, silence alarms or control outlet banks using a mobile app (Android or iOS) or web browser.



Software key features

- Accessible using a mobile app or web browser
- Two-factor authentication
- Multi-user account management
- UPS onboarding via QR code
- Remote monitoring of UPS power trends
- Remote outlet control (cloud-enabled)
- Near-field communication (NFC) for network configuration
- Fleet (tree) view and sorting
- Remote software firmware upgrades
- Alert notifications and responses via email and SMS
- Audible alarm control
- Event log up to 30 days
- Remote self-test
- Remote outlet groups to track where equipment is plugged in
- Available at no cost for 10 years



Ethernet communication port

Use an Ethernet cable to connect the UPS to your network. This enables connection to cloud-based remote monitoring.



Easy setup and commissioning

Scan the QR code on the UPS to download the remote monitoring app on a mobile device. Set up an account and scan the QR code with the app to seamlessly add the UPS to your account. For access on a desktop computer, use the provided web address.



Near-field communication (NFC) capability

Add the UPS to your network using the mobile app and NFC. Tap the NFC area on the UPS with your mobile device to add the UPS to your network.



Remote monitoring dashboard

Accessible via mobile device or web browser, the simple color-coded dashboard provides a quick visual indication of device status: alerts (red), warnings (yellow) or normal operation (blue). Alerts can be sent to a mobile device, providing early awareness of issues that can cause downtime.

Feature focus



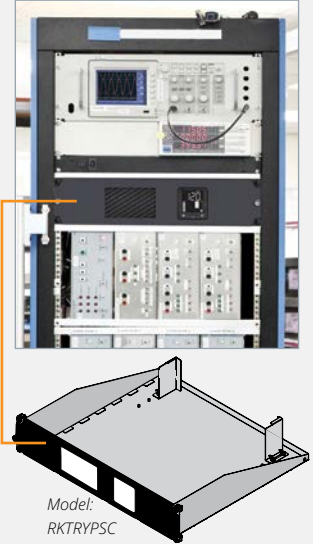
Front view: SMART750PSRTNC,
SMART1000PSRTNC, SMART1500PSRTNC

Rear view: SMART750PSRTNC

Rear view: SMART1000PSRTNC,
SMART1500PSRTNC

Optional rack-mount kit – RKTRYPSC (sold separately)

Includes shelf and faceplate for 2- or 4-post 19-inch IT racks.



1 Multifunction LCD control panel

Rotatable front-panel LCD reports detailed voltage, runtime, load and battery information.

2 On/Off button

3 Status LEDs

Green LED indicates the battery is fully charged (solid green) or the battery is charging (flashing green). Red LED indicates a UPS fault.

4 Mute/Select button

5 Ethernet port (RJ45)

Port connects to a local network.

6 USB-C port

Port connects the UPS to a computer running an SSH server to enable command line interface (CLI) commands.

7 QR code label

Scanning the QR code facilitates downloading the remote monitoring app and adding the UPS to an account.

8 Near-field communication (NFC) area

Add the UPS to your network using NFC and an app-enabled mobile device.

9 Battery- and surge-protected NEMA 5-15R main outlets

Whenever the UPS is operational, these non-switchable outlets remain continuously on to provide battery backup and surge protection to connected equipment.

10 Switchable load banks with battery- and surge-protected NEMA 5-15R outlets

These outlets provide battery backup and surge protection to connected equipment. Each switched load bank can be controlled remotely to reboot unresponsive equipment.

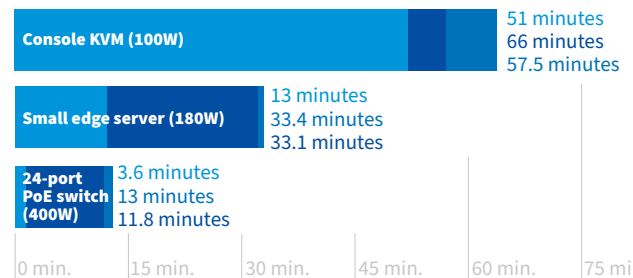
11 Circuit breaker

12 Input power cord with NEMA 5-15P plug

Typical runtimes

Runtime varies with load, battery age and other factors.

■ SMART750PSRTNC
■ SMART1000PSRTNC
■ SMART1500PSRTNC



Specifications

	SMART750PSRTNC	SMART1000PSRTNC	SMART1500PSRTNC
UPS type	Line-interactive	Line-interactive	Line-interactive
Output			
Output capacity (VA/Watts)	750 VA/475 W	1000 VA/750W	1500 VA/1050 W
Nominal output voltage	120V	120V	120V
Frequency compatibility	50 or 60 Hz follows the AC input frequency. Battery cold start is 60 Hz only.		
Output AC waveform (AC line mode)	Sine wave	Sine wave	Sine wave
Output AC waveform (battery mode)	Sine wave	Sine wave	Sine wave
Output receptacles	(8) NEMA 5-15R (Surge + battery backup)	(10) NEMA 5-15R (Surge + battery backup)	(10) NEMA 5-15R (Surge + battery backup)
Controllable load banks	3 load banks: 1 (2 outlets), 2 (2 outlets), 3 (4 outlets)	3 load banks: 1 (2 outlets), 2 (2 outlets), 3 (4 outlets)	3 load banks: 1 (2 outlets), 2 (2 outlets), 3 (4 outlets)
Input			
Nominal input voltage	120V	120V	120V
Input voltage range for mains operation (max adjustable range)	97-145 VAC	97-145 VAC	97-145 VAC
Input frequency	50 Hz/60 Hz auto-sensing	50 Hz/60 Hz auto-sensing	50 Hz/60 Hz auto-sensing
Input connection	NEMA 5-15P, 5 ft. cord	NEMA 5-15P, 5 ft. cord	NEMA 5-15P, 5 ft. cord
Batteries and runtime			
Battery type	Sealed, maintenance-free, lead-acid	Sealed, maintenance-free, lead-acid	Sealed, maintenance-free, lead-acid
Expandable runtime	No	No	No
Backup runtime* - full/half load	2 min./8 min.	1.8 min./10 min.	2.5 min./8 min.
DC system voltage (VDC)	12V	24V	24V
Indicators and switches			
LCD screen	Yes (White text on black)	Yes (White text on black)	Yes (White text on black)
LED functions (color)	Green: line mode; Red: fault	Green: line mode; Red: fault	Green: line mode; Red: fault
Switch functions (type)	On/Off and Enter/Mute	On/Off and Enter/Mute	On/Off and Enter/Mute
Alarms (function)	Low battery, fault	Low battery, fault	Low battery, fault
Alarm default	Temporary mute	Temporary mute	Temporary mute
Communication and management			
Cloud-based monitoring	Yes	Yes	Yes
Interface ports	Ethernet port allows the UPS to be managed via a network connection. NFC commissioning allows easy transfer of network settings to the UPS. USB-C port enables configuration by command line interface (CLI).		
Audible alarm	Yes	Yes	Yes
Protection characteristics			
UPS AC suppression rating	158 joules		
UPS AC suppression response time	Instantaneous		
Overload protection	Line mode: 110% (+15%, -5%), enters fault after 5 minutes; 120% (+15%, -5%), enters fault immediately. Battery mode: 110% (+15%, -5%), shuts down in 5 seconds; 120% (+15%, -5%), shuts down immediately.		
Physical			
Cabinet type	Tower (Rack-mount kit RKTRYPSC; sold separately)	Tower (Rack-mount kit RKTRYPSC; sold separately)	Tower (Rack-mount kit RKTRYPSC; sold separately)
Cabinet material	Plastic	Plastic	Plastic
Battery door	Yes	Yes	Yes
Dimensions (H x W x D)	12.40 x 3.38 x 12.99 in. (315 x 85.9 x 330 mm)	12.40 x 3.38 x 15.35 in. (315 x 85.9 x 389.9 mm)	12.40 x 3.38 x 15.35 in. (315 x 85.9 x 389.9 mm)
Net weight	15.4 lb. (7 kg)	26 lb. (11.8 kg)	28.7 lb. (13 kg)
Environment			
Humidity	0% to 90% RH @ 0 to 40°C (Non-condensing)		
Storage temp./Operating temp.	5° to 122° F (-15° to 50° C)/32° to 104° F (0 to 40° C)		
Standards and compliance			
Regulatory	CAN/CSA-C22.2 No. 107.3 (Canada); ICES (Canada); NOM (Mexico); UL 1778		
Compliance	ENERGY STAR; RoHS; FCC Class B		
Warranty	3-year limited warranty		

Due to continuous improvement programs, specifications are subject to change without notice. These UPS systems have \$250,000 Ultimate Lifetime Insurance for connected equipment.

* Runtime varies with load, battery age and other factors.

Eaton
1000 Eaton Boulevard
Cleveland, OH 44122
United States
Eaton.com

© 2025 Eaton
All Rights Reserved
Printed in USA
BR153232EN / 24-05-279
May 2025

EAT•N
Powering Business Worldwide

Learn more about Tripp Lite series
cloud-connected UPS systems at
TrippLite.Eaton.com



Follow us on social media to get the latest product and support information.



Eaton is a registered trademark.

All other trademarks are property of their respective owners.