



TAA-compliant Tripp Lite series SmartOnline UPS systems



Enhanced performance and TAA compliance for government contracts

The refreshed Tripp Lite series SmartOnline® UPS family includes models that comply with the federal Trade Agreements Act (TAA). These TAA-compliant UPS systems are eligible for General Services Administration (GSA) Schedule contracts, making them an option for government and military agencies and contractors.

Network capability, long battery runtimes and an easy-to-use LCD control panel make these rack/tower double-conversion UPS models an outstanding value for minimizing downtime in network closets, server rooms and edge computing sites.

Power and protect sensitive IT equipment

Highest level of power protection

Double-conversion technology continually converts incoming AC power into DC power, and then resynthesizes it back into AC power with a pure sine wave.

- Continuous on-line operation isolates sensitive equipment from power problems on the AC line.
- Automatic restart after outages reduces the need for onsite visits.
- In the event of an overload or internal UPS fault, the load is transferred to utility power to maintain operation (without battery backup).

Reliable battery backup to prevent downtime

Zero transfer time to battery allows uninterrupted operation.

- User-replaceable, hot-swappable VRLA internal batteries outlast brief outages and permit graceful system shutdown during longer blackouts.
- Battery runtime can be extended with up to four optional external battery packs (sold separately).

Easily monitor and manage UPS operation

User-friendly local monitoring and control

Status LEDs and a menu-driven LCD make it easier to identify alarms and faults. The control panel rotates to accommodate horizontal or vertical UPS installation.

Advanced remote monitoring

The 6000 VA UPS includes a TAA-compliant network card (WEBCARDLXE) for SNMP-based remote management. The network card is sold separately for the 1500, 2000 and 3000 VA models. Free downloadable PowerAlert software supports remote monitoring and control.

- USB and RS-232 serial ports provide additional communication options. (Cables are included.)
- RPO and ROO functions allow remote shutdown or restart of connected equipment.
- Optional TAA-compliant environmental monitoring sensors are available: E2MT, E2MTDO and E2MTHDI. (Network card is required.)



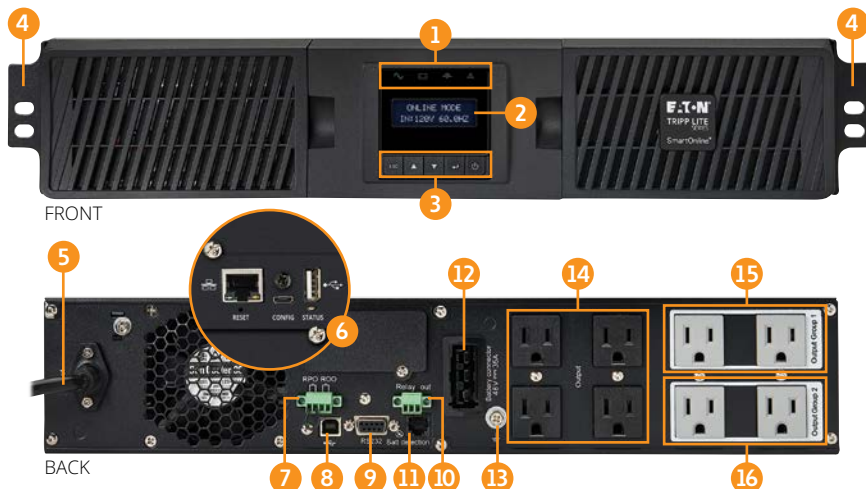
Mount the UPS in a rack or use the included tower stands for vertical placement.



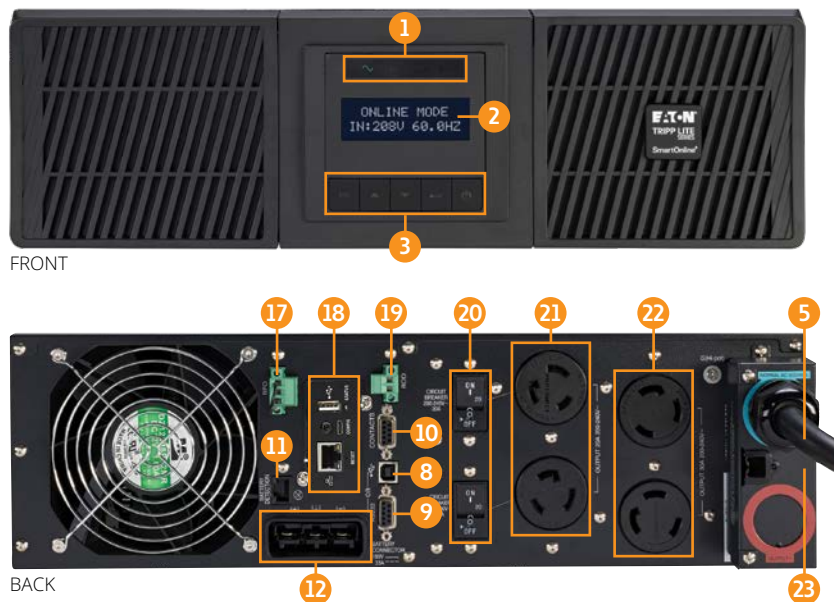
Powering Business Worldwide

Feature focus (See TrippLite.Eaton.com for model-specific configurations.)

Model: SU1500RTLCD2UTAA



Model: SU6000RT3UTAA



- 1 Status indicators (online, battery, bypass, fault)
- 2 Menu-driven LCD
- 3 Control buttons (escape, up, down, enter, on/off)
- 4 Rack-mounting brackets (removable)
- 5 Input power cord with plug
- 6 Network card slot (WEBCARDLXE sold separately)
- 7 RPO/ROO connector
- 8 USB communication port
- 9 RS-232 (DB9) serial communication port
- 10 Relay output connector
- 11 External battery pack detection port
- 12 External battery pack connector
- 13 Ground screw
- 14 Primary group outlets
- 15 Group 1 programmable outlets
- 16 Group 2 programmable outlets
- 17 Remote power off (RPO) connector
- 18 Network management card (included)
- 19 Remote on/off (ROO) connector
- 20 Circuit breakers (200–240V 20A)
- 21 (2) L6-20R outlets
- 22 (2) L6-30R outlets
- 23 Input and output terminal blocks

Specifications

Catalog number	Rating (VA/watts)	Internal runtime*, Full/half load	Plus 1 external battery pack*, Full/half load	External battery pack compatibility	Output connections	Input connection	Dimensions (H x W x D)	Net weight
120V 2U rack/tower UPS with network card slot								
SU1500RTLCD2UTAA	1500/1350	5.8/16.5 min.	27/63 min.	BP48RT2UTAA	(8) 5-15R	5-15P w/8 ft. cord	3.4 x 17.3 x 17.7 in.	42.6 lb.
SU2200RTLCD2UTAA	2000/1800	7.7/20.2 min.	33.1/76 min.	BP72RT2UTAA	(1) L5-20R, (6) 5-20R	5-20P w/8 ft. cord	3.4 x 17.3 x 23.8 in.	61.5 lb.
SU3000RTLCD2UTAA	3000/2700	4.8/13.9 min.	23/53.1 min.	BP72RT2UTAA	(1) L5-30R, (6) 5-20R	L5-30P w/8 ft. cord	3.4 x 17.3 x 23.8 in.	63 lb.

208V 3U rack/tower UPS with WEBCARDLXE network card

SU6000RT3UTAA	6000/5400**	3/8 min.	16/38 min.	BP180RT3UTAA	(2) L6-20R, (2) L6-30R, Hardwire	L6-30P w/10 ft. cord or Hardwire	5.1 x 17.3 x 27 in.	106 lb.
---------------	-------------	----------	------------	--------------	----------------------------------	----------------------------------	---------------------	---------

Due to continuous improvement programs, all specifications are subject to change without notice. SmartOnline UPS has a two-year limited warranty and \$250,000 Ultimate Lifetime Insurance. *Runtime varies with load, battery age and other factors. UPS accepts up to four external battery packs. **5400W at 230/240V, derated to 4800W at 208V.

External battery packs

Catalog number	Description	Accessories	Description
BP48RT2UTAA	48V 2U rack/tower external battery pack, TAA	SUPDMBP6K	Maintenance bypass for SU6000RT3UTAA, TAA
BP72RT2UTAA	72V 2U rack/tower external battery pack, TAA	SU6000XFMRT2UTAA	Step-down isolation transformer for SU6000RT3UTAA, TAA
BP180RT3UTAA	180V 3U rack/tower external battery pack, TAA	WEBCARDLXE	Network management card for SmartOnline UPS, TAA

Eaton
1000 Eaton Boulevard
Cleveland, OH 44122
United States
Eaton.com

© 2025 Eaton
All Rights Reserved
Printed in USA
BR153201EN / 25-02-053
February 2025

To learn more, visit Eaton.com/SmartOnline

Eaton is a registered trademark.

All other trademarks are property of their respective owners.

Follow us on social media to get the latest product and support information.

