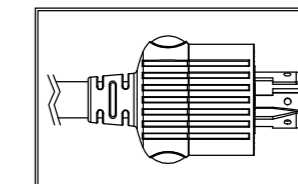
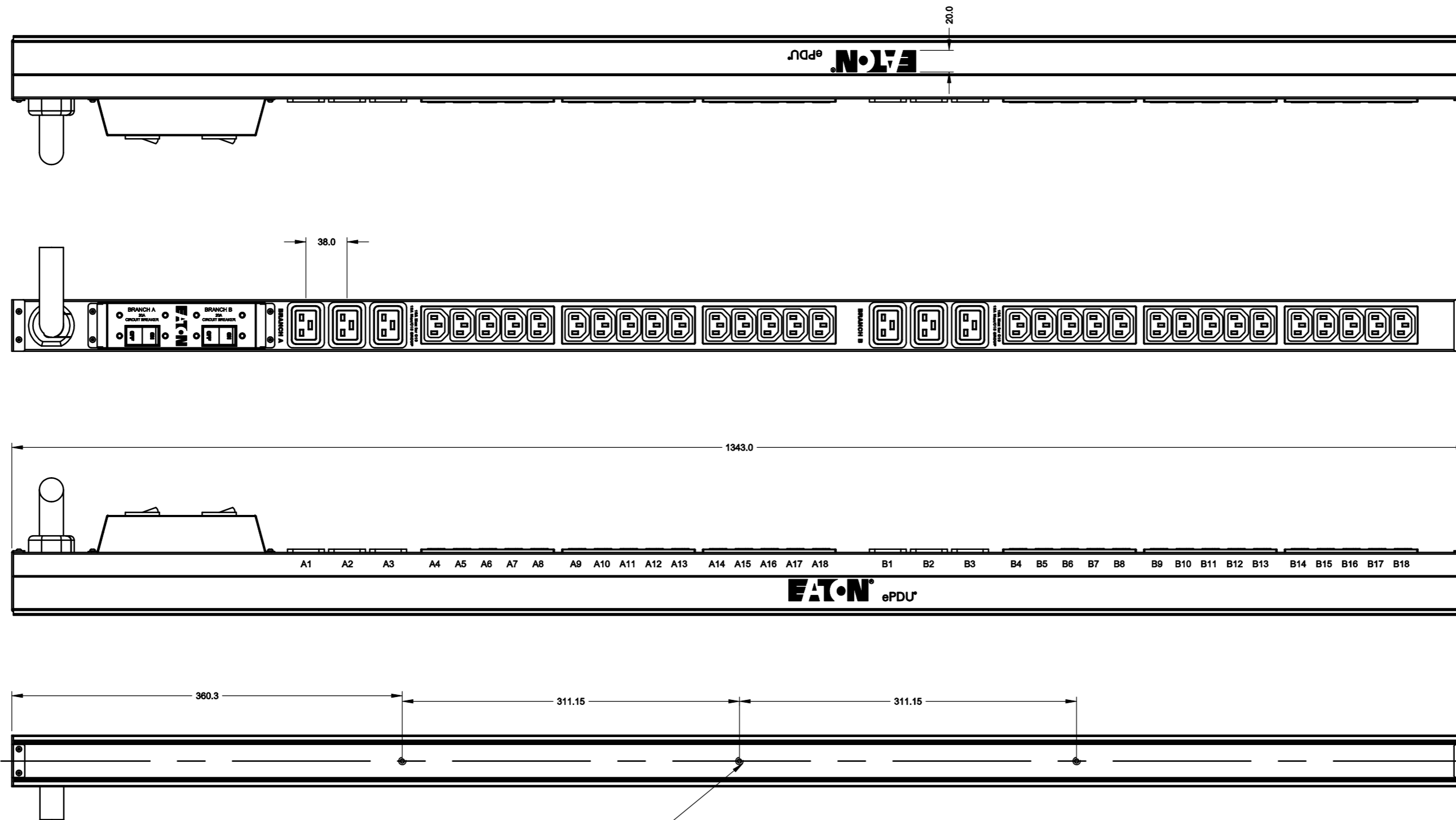
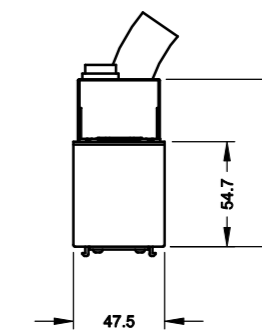


08

Part Number.....ePBZ80
 Mounting.....Vertical (0U)
 Over Current Protection.....CB-2P/20A x 2 (UL489) TAISHIBA
 Power Switch.....N/A
 Rating.....24A / 240 Vac
 Input.....NEMA L6-30P
 Outlet.....IEC320 C13 x 30
 IEC320 C19 x 6
 Power Cord.....10AWG / 3C 10FT
 UL Standard.....UL60950-1
 Certification.....UL



NEMA L6-30P 30A,250V



NOTE: all dimension for reference only.

screw hole for bush button



Size: A2	NAME	DATE	DIMENSION TOLERANCE	MATERIAL	
DRAWN	TYC	2011/05/23	X±0.3mm	see Note	EPBZ80-APR
CHECKED	TYC	2011/05/23	.X±0.1mm		
APP'D	JSL	2011/05/23	.XX±.05mm		
SCALE: 1:4	VERSION: A		X'± 1°	SHEET 1 OF 1	PART NO: R217- DRAW NO: R217