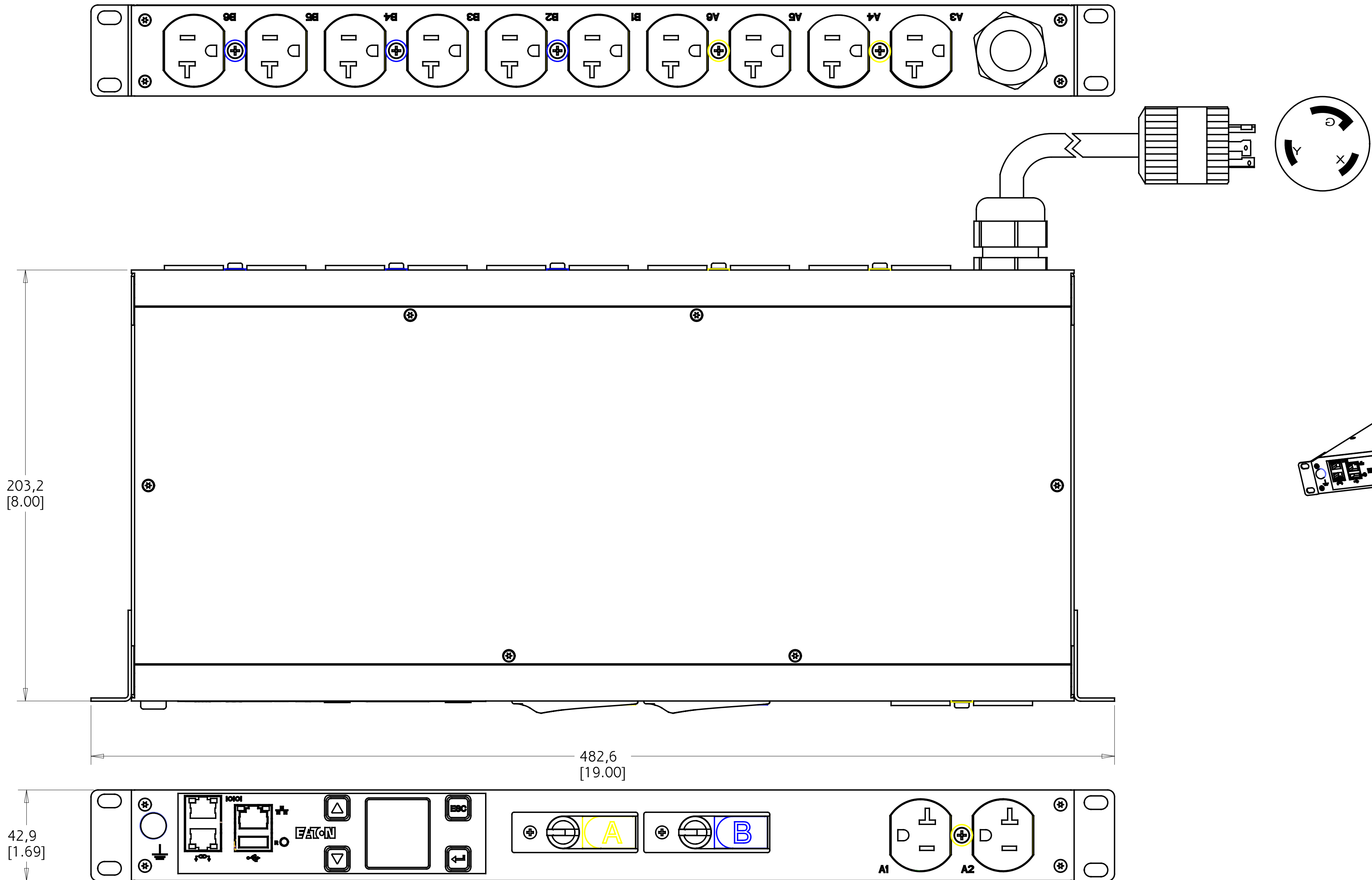

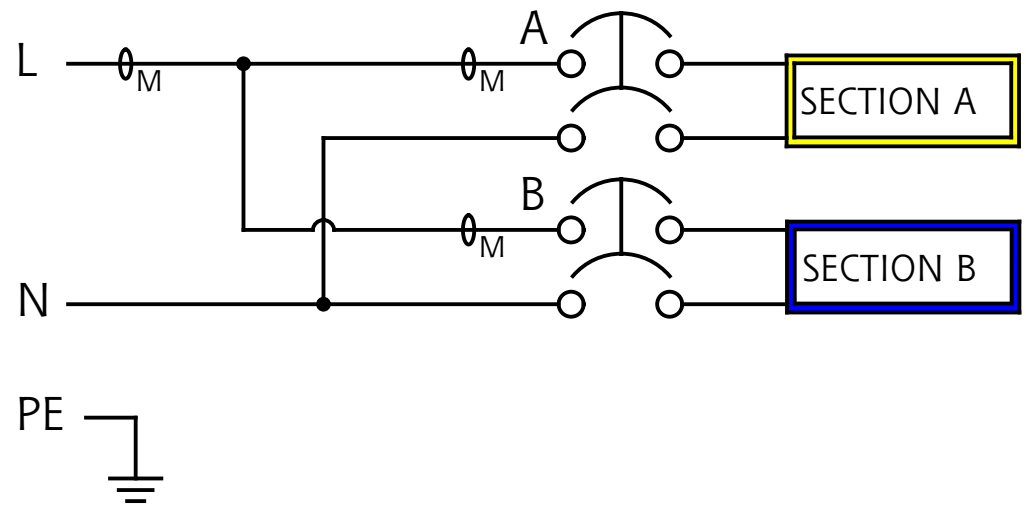


REV	ECO No.	REVISION	DR	CK	AP	AP	DATE
001	092227	ENGINEERING RELEASE	LS				29 OCT 15
002	096587	ADD UL MARKING	RS				21 JAN 16



EMIT03-10  
G3 METERED INPUT

FUNCTIONALITY	INPUT	OUTPUT	ENVIRONMENTAL
CURRENT, POWER AND ENERGY METERING FOR INPUT & BRANCH	NEMA L5-30 PLUG 10FT 10AWG / 3C POWERCORD	(12) NEMA 5-20R	32° TO 140° F 0° TO 60° C
MECHANICAL	INPUT RATING	OUTPUT RATING	CERTIFICATIONS
19.00" (482.6mm) WIDTH 1.69" (42.9mm) HEIGHT 8.00" (203.2mm) DEPTH BLACK CHASSIS	100-127V ~ W + N + PE 24A 50/60HZ	100-127V ~ 16A MAX PER OUTLET 16A MAX PER SECTION 24A MAX TOTAL	
CIRCUIT BREAKERS	FILTER AND SPIKE/SURGE	ACCESSORIES	CONFIGURATION
(2) 20A 1-POLE UL LISTED	NONE	INCLUDED SPK021 - INSTALLATION INCLUDED SPK013 - NETWORK OPTIONAL EMP001 - ENVIRONMENTAL PROBE	EMI3MGB5EMB13A1 SERIAL NUMBER B682_____



<div> <div>METRIC</div> <div>THIRD ANGLE PROJECTION</div> <div>EATON CORPORATION, ELECTRICAL</div> <div>EATON</div> <div>SIZE D</div> </div>	
<div>DESCRIPTION: ePDU G3 SPECIFICATION DRAWING FOR EMIT03-10</div>	
<div>MODIFIED BY: L. SANDOVAL</div>	<div>DATE: 29 OCT 15</div>
<div>UNLESS OTHERWISE SPECIFIED TOLERANCES ON DIMENSIONS ARE:            ANGLES: ±1/2°    DECIMALS: 0.00 ±0.75    X, (FOR X &lt; 3) ±1            HOLES: ±0.10    0.00 ±0.25    X, (FOR X ≥ 3) ±2.5            DIMENSIONS ARE IN MILLIMETERS (INCHES) AND AFTER PLATING</div>	
<div>ECO: 092227</div>	<div>STATE: RELEASE</div>
<div>PRO-ENGINEER GENERATED</div>	
<div>PART NAME: EM13MG55EM13A1</div>	<div>REVISION: 002</div>
<div>SHEET: 1 of 1</div>	
<div> <p>EATON CORPORATION - CONFIDENTIAL AND PROPRIETARY NOTICE TO PERSONS RECEIVING THIS DOCUMENT AND RELATED INFORMATION: THIS DOCUMENT, INCLUDING THE DRAWING AND INFORMATION CONTAINED THEREIN, IS CONFIDENTIAL AND IS THE EXCLUSIVE PROPERTY OF EATON CORPORATION. IT IS TO BE KEPT IN SECRECY AND IS NOT TO BE REPRODUCED, COPIED, OR IN ANY MANNER DISCLOSED TO ANY OTHER PERSON OR ENTITY WITHOUT THE WRITTEN PERMISSION OF EATON CORPORATION. ANY UNAUTHORIZED DISCLOSURE OR REPRODUCTION OF THIS DOCUMENT IS STRICTLY PROHIBITED AND WILL BE TREATED AS A VIOLATION OF EATON CORPORATION'S POLICY ON CONFIDENTIALITY AND PROPRIETARY INFORMATION. THE RECIPIENT ACKNOWLEDGES AND AGREES THAT THIS DOCUMENT CANNOT BE USED IN ANY MANNER AFFECTING THE INTERESTS OF EATON, AND THAT ANY PORTION OF THIS DOCUMENT MAY BE USED FOR ANY PURPOSES WITHOUT THE PRIOR WRITTEN CONSENT OF EATON. IN THE CASE OF CONFLICTING CONTRACTUAL PROVISIONS, THIS NOTICE SHALL GOVERN THE STATUS OF THIS DOCUMENT.</p> <p>© 2008 Eaton Corporation. All Rights Reserved.</p> </div>	