

# Eaton Intelligent Power Manager (IPM)

## Integrated power management software for virtual environments

A part of Eaton's Brightlayer Data Centers suite, Intelligent Power Manager (IPM) software for disaster avoidance application provides the tools needed to monitor and manage power equipment in physical or virtual environments to keep IT devices running during a power or environmental event.

This innovative HTML5-based solution ensures system uptime and data integrity by allowing you to remotely monitor, manage and control devices on your network. IPM provides a solution that is easy to use, maintains business continuity and allows you to do more with less.

### Achieve more with less: Reduce capital expenses

- **Less initial upfront batteries:** Increase your runtime via software limiting the hardware to be purchased and deployed.
- **Reduced battery replacement required:** Use fewer batteries to minimize future battery maintenance and replacement.
- **Promote a greener environment:** Consume less energy and recycle fewer batteries.

### Maintain business continuity: Minimize operating expenses

- **Intelligent load shedding:** Increase system uptime while extending battery runtime and minimizing generator load by suspending non-critical virtual machines.
- **Site Recovery Manager failover:** Reduce data recovery expenses by synching primary and disaster recovery sites prior to power failures.
- **Power capping on demand:** Keep critical workloads running longer during a power outage by limiting server power consumption.

### Protect remote sites: Automate business continuity at the edge

- **Within cluster:** Host IPM within your cluster to avoid needing additional IT equipment for your power management software.
- **Complex system protection:** Configure IPM to gracefully shutdown all your IT equipment in the order required to assure safe and quick recovery from power or environmental outages.
- **Automated protection:** IT personnel not required on site; remote sites can be set up and managed from a central location.

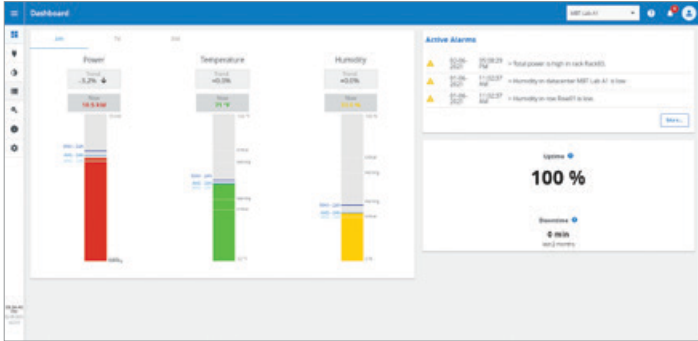


Powering Business Worldwide

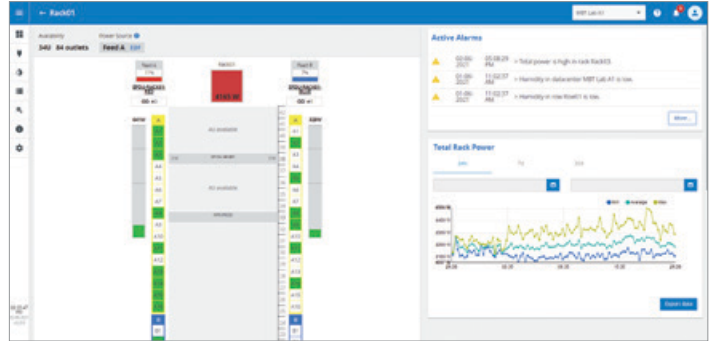
# Compare IPM licenses

Features	IPM Monitor	IPM Manage	IPM Optimize
Contextual visibility of power metrics and constraints	✓	✓	✓
Monitor Eaton and third-party power devices	✓	✓	✓
Manage and update Eaton power devices		✓	✓
Define basic business continuity automations with host level actions		✓	✓
Simple Wizard-based automation configuration		✓	✓
Define advanced business continuity automations with VM and cluster level actions			✓

## IPM dashboard



## IPM rack view



## Eaton alliance partners

Eaton understands that power protection is only one aspect of IT environments. By partnering with the industry's leading global IT providers, Eaton helps harness the full power of data centres. Together with alliance partners, Eaton aims to solve even the most complex IT challenges, while continuing to provide the ultimate in power protection.



## Power outages cost both time and money

**37%** of IT professionals suffered an **unplanned outage** in the past 12 months

**32%** of respondents said those outages last **more than four hours**

**34%** manage racks in multiple locations or in a **colocation arrangement**

Source: Eaton and Tech Target survey: How "software defined" is redefining the data center

For more information, visit [Eaton.com/au/IPM](https://www.eaton.com/au/IPM)



**Eaton Electrical (Australia) Pty Ltd**  
10 Kent Road, Mascot, NSW 2020  
Australia

**Eaton Industries Company (NZ)**  
Enable House, 106 Wrights Road  
Christchurch 8041  
New Zealand

Eaton is a registered trademark.  
All other trademarks are property of their respective owners.

© 2021 Eaton  
All Rights Reserved  
September 2021

Follow us on social media to get the latest product and support information.

