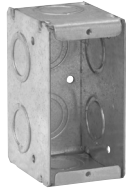


Steel masonry boxes

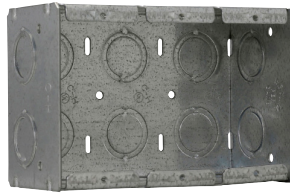
MASONRY BOXES

2 1/2" DEEP x 3 3/4" HIGH
1/2" & 3/4" CONCENTRIC KOs

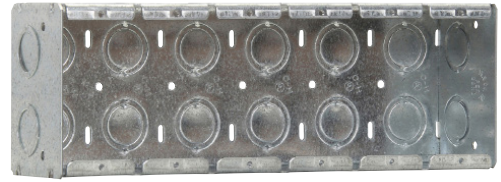
UL LISTED



TP682



TP684



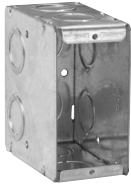
TP687

| Cat. # | Gang | Width | Knockouts | | | Capacity cu. in. | Unit qty. | Wt. lbs. per 100 |
|--------|------|----------|-----------|-----------|--------|------------------|-----------|------------------|
| | | | Each end | Each side | Bottom | | | |
| TP682 | 1 | 1 15/16" | 1 | 2 | 2 | 15.5 | 20 | 70 |
| TP683 | 2 | 3 3/4" | 2 | 2 | 4 | 31.0 | 10 | 103 |
| TP684 | 3 | 5 3/16" | 3 | 2 | 6 | 46.5 | 5 | 129 |
| TP685 | 4 | 7 3/8" | 4 | 2 | 8 | 62.0 | 5 | 165 |
| TP686 | 5 | 9 3/16" | 5 | 2 | 10 | 77.5 | 5 | 189 |
| TP687 | 6 | 11" | 6 | 2 | 12 | 93.0 | 1 | 230 |

MASONRY BOXES

3 1/2" DEEP x 3 3/4" HIGH
1/2" & 3/4" CONCENTRIC KOs

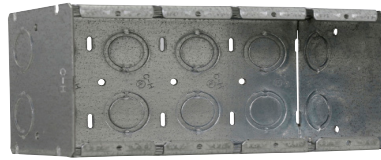
UL LISTED



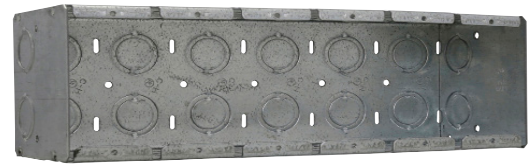
TP690



TP691



TP693



TP695

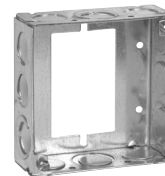
| Cat. # | Gang | Width | Knockouts | | | Capacity cu. in. | Unit qty. | Wt. lbs. per 100 |
|--------|------|----------|-----------|-----------|--------|------------------|-----------|------------------|
| | | | Each end | Each side | Bottom | | | |
| TP690 | 1 | 1 15/16" | 2 | 2 | 2 | 22.0 | 20 | 84 |
| TP691 | 2 | 3 3/4" | 4 | 2 | 4 | 44.0 | 10 | 120 |
| TP692 | 3 | 5 3/16" | 6 | 2 | 6 | 66.5 | 10 | 155 |
| TP693 | 4 | 7 3/8" | 8 | 2 | 8 | 88.0 | 5 | 207 |
| TP694 | 5 | 9 3/16" | 10 | 2 | 10 | 110.0 | 5 | 235 |
| TP695 | 6 | 11" | 12 | 2 | 12 | 132.0 | 1 | 287 |

Steel boxes

MASONRY BOX PARTITIONS & EXTENSION RING



TP820



TP422

| Cat. # | Description | Unit qty. | Wt. lbs. per 100 |
|--|--|-----------|------------------|
| Masonry box partitions | | | |
| TP820 | Non-metallic partition for 2 1/2" deep masonry boxes | 25 | 3 |
| TP821 | Non-metallic partition for 3 1/2" deep masonry boxes | 25 | 4 |
| Cat. # | Knockouts | Unit qty. | Wt. lbs. per 100 |
| | Sides | Bottom | |
| 1 1/2" deep switch & masonry box extension ring | | | |
| TP422 | 8 - 1/2", 4 - 1/2" + 3/4" E | 50 | 50 |

① For use as extension with switch box, not four square box.