

Steel square covers

UNI-MOUNT™ COVERS

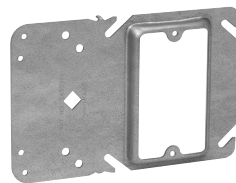
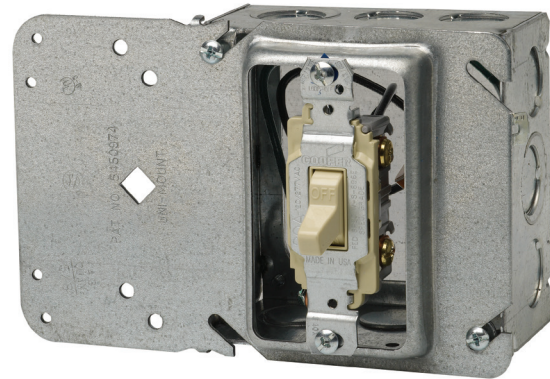
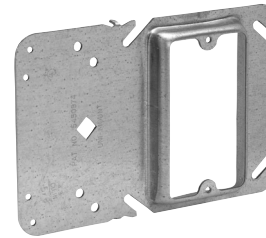
The Uni-Mount combines the features of a mounting device plate with those of a box support, giving you one universal plate for all of your needs. Specifically designed for use with metal or wood studs:

The new and improved version incorporates four small holes on the left side (support side) of the bracket. These holes allow for the attachment of box mounting brackets to allow for use of both sides of the stud. The holes are strategically located to accept either the Eaton's B-Line Series BB423 bracket or the Caddy H23 bracket. Additionally, the viewing hole has been significantly enlarged (and is now diamond shaped) to make it even easier to find mark lines on the stud.

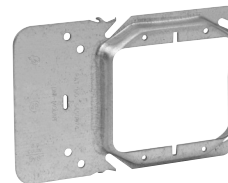
Features:

- Guide tabs ensure consistent alignment on stud
- Stud alignment hole ensures consistent mounting height
- Rigid bracket design eliminates the need for far side support
- Available as a single or two device cover
- Universal design fits all 4" square boxes
- Available in 1/2", 5/8" and 3/4" raised
- Can be ordered pre-assembled to popular 4" square boxes
- Fast and easy installation
- Can be used in multiple applications, resulting in less items to stock
- Less labor intensive
- Less material handling
- No multiple assemblies to handle
- Can be used in Class II communications outlets for low voltage without a box
- UL Listed and CSA certified^L
- UL File No. E-23156

^LCSA requires a far side support.



Single gang



Two gang

Steel boxes

| Cat. # | Description | Capacity cu. in. | Unit qty. | Wt. lbs. per 100 |
|---|-------------|------------------|-----------|------------------|
| Single Gang | | | | |
| TP30000 | 1/2" raised | 3.8 | 50 | 43 |
| TP31000 | 5/8" raised | 4.3 | 50 | 46 |
| TP32000 | 3/4" raised | 5.5 | 50 | 50 |
| Two Gang | | | | |
| TP35000 | 1/2" raised | 6.0 | 50 | 38 |
| TP36000 | 5/8" raised | 8.0 | 50 | 52 |
| TP37000 | 3/4" raised | 9.0 | 50 | 54 |
| Low profile screws – reduces risk of sheetrock bulge | | | | |
| TP710 | L.P. screws | - | 1000 | 0.5 |