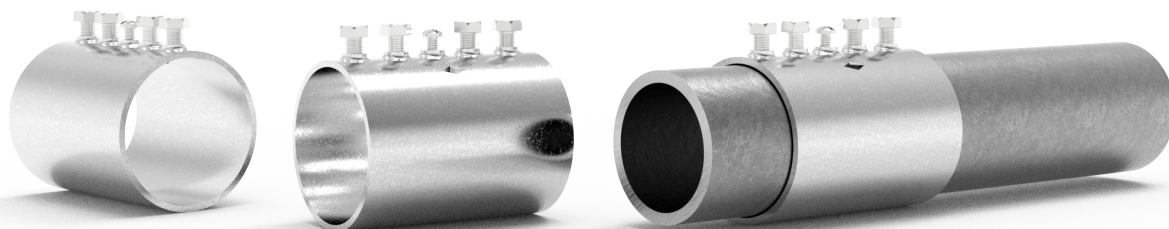


# Set screw slip couplings

## Designed for use with EMT conduit systems



### Engineered for:

- Electrical prefabrication
- Overhead EMT or trapeze applications
- Traditional EMT applications

Eaton's Crouse-Hinds series set screw slip couplings for EMT conduit are an ideal solution for electrical prefabrication or EMT applications where conduit movement is constrained during installation.

A conveniently located viewing window provides visual confirmation that the coupling is centered between conduit sections.

### Certifications

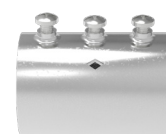
- cULus

### Material/finish

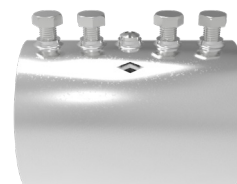
- Zinc-plated steel

### Ordering information

Part #	Trade size	Pack qty.	Wt. lbs per 100
<b>460SCP</b>	1/2"	50	6.0
<b>461SCP</b>	3/4"	25	10.0
<b>462SCP</b>	1"	20	14.0
<b>463SCP*</b>	1-1/4"	10	28.0
<b>464SCP*</b>	1-1/2"	10	32.0
<b>465SCP*</b>	2"	5	48.0
<b>466SCP*†</b>	2-1/2"	2	135.0
<b>467SCP*†</b>	3"	1	173.0
<b>468SCP*†</b>	3-1/2"	1	204.0
<b>469SCP*†</b>	4"	1	238.0



1/2" to 1"



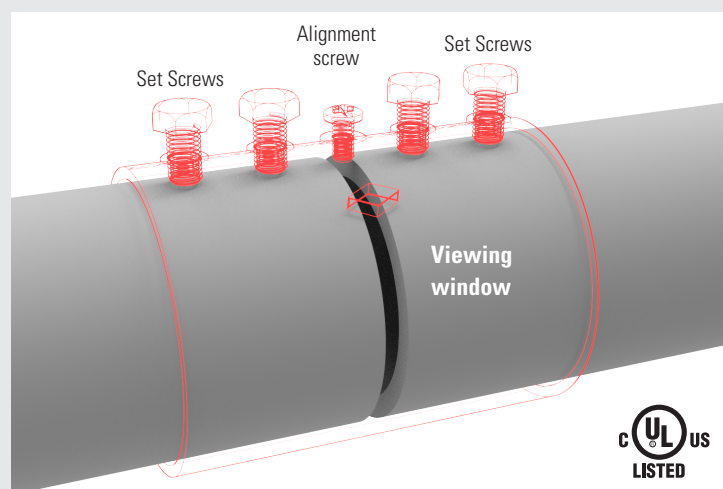
1-1/4" to 4"

\*Four tightening screws.

†cULus Listed for EMT, IMC and RMC.

### Features & benefits

- Increased productivity in prefab shops and standard EMT applications
- Slide couplings freely along conduit sections with no center stop for maximum installation flexibility
- Use set screws to secure coupling while adjoining conduit section is moved into place
- Center oriented sight hole to visually confirm coupling point
- 2-1/2" - 4" cULus listed for EMT, RMC and IMC
- Concrete tight when taped
- Tri-head screws can be installed with slotted, Phillips or Robertson head screwdriver
- Slotted hex head screws for sizes 1-1/4" - 4"



Powering Business Worldwide

Eaton's Crouse-Hinds  
1201 Wolf Street  
Syracuse, NY 13208  
Eaton.com

Publication No. SA406015EN  
April 2024

© 2024 Eaton  
All Rights Reserved  
Printed in USA  
Eaton is a registered trademark.

All other trademarks are property  
of their respective owners.