

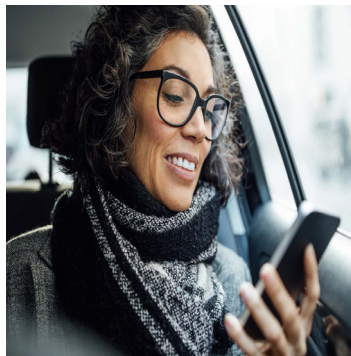
Eaton Green Motion EV smart breaker charger

Eaton Green Motion EV smart breaker charger combines fast AC charging at 7.7 kW, revenue-grade metering, and remote access. This forward-thinking solution provides additional versatility with multiple installation options that install directly into BR loadcenters or PRL3X panelboards for maximum flexibility. Monitor and control charging with our mobile app and open APIs.



Speed and control

- Fast AC charging at 7.7 kW, 240 Vac
- Revenue-grade metering accuracy ($\pm 0.2\%$ per ANSI C12.20).
- Real-time and remote access allows you to optimize charging times and take part in smart grid programs.



Stay connected and customize

- Set charging schedules to optimize costs, receive alerts and notifications with our mobile app.
- Powered by our Brightlayer platform enables integration with your preferred charge management solution.



Energy savings and efficiency

- Simply control rate of charge to not incur higher costs during peak rate periods.
- Efficient and simple installation in BR loadcenters and PRL3X panelboards enabled by a circuit breaker form factor.



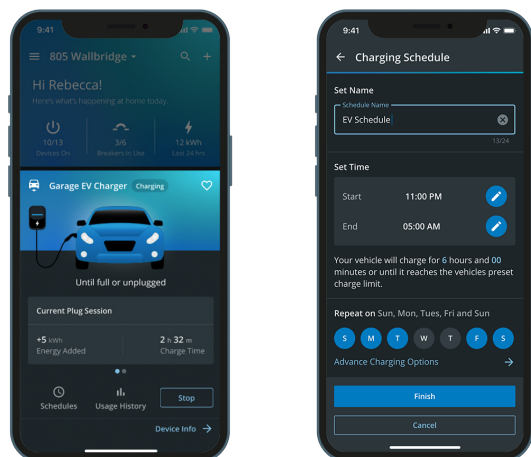
Powering Business Worldwide

Technical Specification

Input Electrical Ratings	<ul style="list-style-type: none"> Voltage: Single Phase, 208-240 Vac, 60 Hz Breaker rating: 40 A Power: 7.7 kW at 240 Vac; 6.6 kW at 208 Vac
Output Electrical Ratings	<ul style="list-style-type: none"> Voltage: 208-240 Vac, 60 Hz Current: 32 A Power: 7.7 kW at 240 Vac; 6.6 kW at 208 Vac
Wiring Options	<ul style="list-style-type: none"> Hardwire
Output Cable	<ul style="list-style-type: none"> 25' Cable J1772 Compliant connector
Metering	<ul style="list-style-type: none"> 0.2% accurate revenue grade metering tested to ANSI C12.20
LED Indicator	<ul style="list-style-type: none"> RGB (Red, Green, Blue) LEDs to indicate charger status and fault condition on the EV Connector.
Wireless Connectivity	<ul style="list-style-type: none"> IEEE 802.11 b/g/n 2.4 GHz Wi-Fi
Cybersecurity	<ul style="list-style-type: none"> Tested per cybersecurity guidelines endorsed by UL and IEC
Firmware Features	<ul style="list-style-type: none"> Open platform with support for OCPP (Open Charge Point Protocol) 1.6J 4MB of local data storage to limit the possibility of data loss Over-the-air (OTA) firmware updates
Enclosure	<ul style="list-style-type: none"> Installs in BR loadcenter (GMEV32BR- DC, GMEV32BR-JB) or PRL3X panelboard (GMEV32BAB-DC, GMEV32BAB-JB)
Weight	<ul style="list-style-type: none"> Direct connect kit (GMEV32BAB-DC, GMEV32BR-DC): 9.7 lbs. Direct connect + junction box kit (GMEV32BAB-JB, GMEV32BR-JB): 14.7 lbs.
Certifications	<ul style="list-style-type: none"> Safety: UL, CSA, NFPA Article 625 SAE J1772 2010 Ed. FCC Compliant, Part 15 ANSI C12.20
Warranty	<ul style="list-style-type: none"> 3 years

Get started by downloading Eaton's Brightlayer Home app available on iOS and Google Play stores.

Save on energy costs and minimize CO2 impact with simple app control:



- Easily commission charger and connect to Wi-Fi
- Monitor and control charging status from anywhere
- Track energy usage with real-time statistics and insights
- Schedule charging based on Time of Use rates (TOU) to reduce costs
- Receive notifications on charging status, power outage, and ground fault
- Advanced options to limit the charge speed (6 A minimum)
- Manage multiple chargers and cap a charging session



Direct connect kit options

CATALOG & DESCRIPTION

GMEV32BAB-DC

Installs in a PRL3X panelboard

- 7.7 kW EV smart breaker charger, 32 A, BAB bolt-on 2P 40 A
- J1772 EV connector and 25-foot cord
- Cord management bracket

GMEV32BR-DC

Installs in a BR loadcenter

- 7.7 kW EV smart breaker charger, 32 A, BR plug-on 2P 40 A
- J1772 EV connector and 25-foot cord
- Cord management bracket

GMEV32BAB-JB

Installs in a PRL3X panelboard

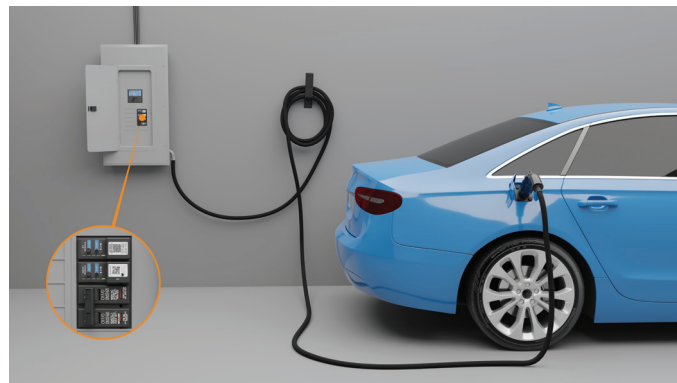
- Junction box
- 7.7 kW EV smart breaker charger, 32 A, BAB bolt-on 2P 40 A
- J1772 EV connector and 25-foot cord
- Cord management bracket

GMEV32BR-JB

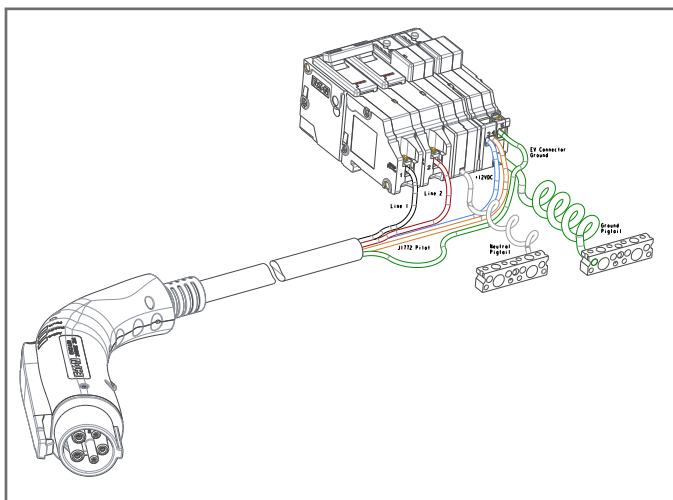
Installs in a BR loadcenter

- Junction box
- 7.7 kW EV smart breaker charger, 32 A, BR plug-on 2P 40 A
- J1772 EV connector and 25-foot cord
- Cord management bracket

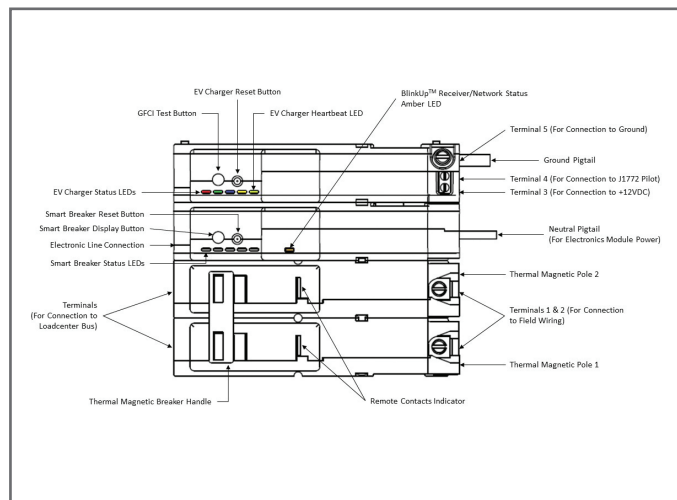
Note: Junction box can be up to 250 feet away from loadcenter or panelboard



Product dimensions



EV smart breaker charger and EV connector



EV smart breaker charger diagram



Direct connect kit, plug-on (GMEV32BR-DC)



Direct connect + junction box kit, plug-on (GMEV32BR-JB)



Direct connect kit, bolt-on (GMEV32BAB-DC)



Direct connect + junction box kit, bolt-on (GMEV32BAB-JB)

**Contact the Eaton Technical Resource Center at
1-877-ETN-CARE (386-2273) option 2, option 9
for further assistance.**

Eaton
1123 Highways 74 S
Peachtree City, Georgia 30329
United States
Eaton.com
Eaton.com/ev-charging

© 2025 Eaton
All rights reserved
Printed in USA
Publication number: TD003017EN
(Rev.02)
February 2025

EATON
Powering Business Worldwide

Eaton is a registered trademark.

All other trademarks are property of
their respective owners.

Scan QR code for product
information, documents and more

