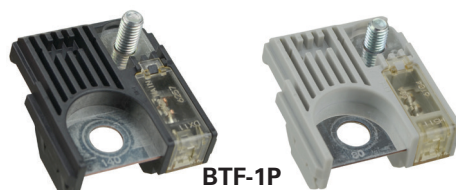
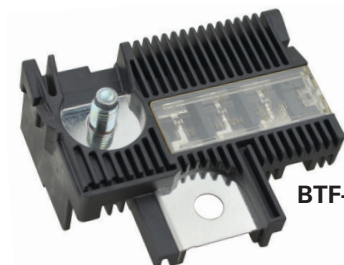


BTF multi-pole battery terminal fuses

RoHS
2011/65/EU**BTF-1P****BTF-2P****BTF-3P****BTF-5P****Catalog symbols:**

- BTF-1P-__
- BTF-2P-__
- BTF-3P-__
- BTF-5P-__

Description:

Eaton Bussmann™ series BTF battery terminal fuses contain one or more fuse elements of differing amp ratings for protecting circuits in a single fuse holder that's mounted directly on the battery's terminal.

Their function is to protect the conductors and not the devices on the circuit(s).

They are the OEM equivalent to those part numbers used on popular models of Chrysler, Ford, Lexus, Lincoln, Mercury, Mitsubishi, Nissan, Scion, Subaru, Suzuki, and Toyota vehicles since 2001.

Specifications:**Ratings**

- Volts: 32 Vdc
- Amps:
 - See catalog number table for ratings by catalog number
- Interrupting rating: 1 kA

Agency information

- ISO 8820-4
- JASO D612-4
- RoHS compliant

Terminals

- M6 stud (BTF-1P-__ and BTF-2P-__)
- M8 stud and OEM connector (BTF-3P-__ and BTF-5P-__)

Materials

- Element: Copper alloy
- Body: PS-S-GF35
- Cover: PES

Environmental

- Operating temperature range -40°C to 120°C (-40°F to 248°F)

Dimensions

- See page 3

Applications:

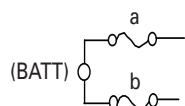
- Replacement fuses for automotive OEM part numbers



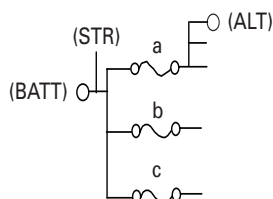
Powering Business Worldwide

Catalog no.	OEM part no.	Vehicle make	Amps	Volts	Interrupting rating	Schematic
BTF-1P-80	82211AG150 3673-950J00	Subaru Suzuki	80	32 Vdc	1 kA	—
BTF-1P-100	MN164187 3673-952J00	Mitsubishi Suzuki	100			
BTF-1P-120	MN164188 3673-966J00	Mitsubishi Suzuki	120			
BTF-1P-140	82620-33040 24380-JA70A	Lexus, Scion, Toyota Nissan	140			
BTF-2P-180120	68164797-AA	Chrysler	180, 120			A
BTF-2P-200100	BR3Z-14526-AA AE5Z-14526-BA	Ford Ford, Lincoln, Mercury	200, 100			
BTF-2P-250125	AL3Z-14526-AA	Ford	250, 125			
BTF-3P-1206080	82620-52080A	Scion, Toyota	120, 60, 80			B
BTF-3P-1208080	82620-52060A		120, 80, 80			
BTF-5P-1010868	24380-79910	Nissan	100, 100, 80, 60, 80			C
BTF-5P-1210868	24380-79912		120, 100, 80, 60, 80			
BTF-5P-141010108	24380-7994A		140, 100, 100, 100, 80			
BTF-5P-25010888	24380-79918		250, 100, 80, 80, 80			D
BTF-5P-225106108	24380-79919		225, 100, 60, 100, 80			

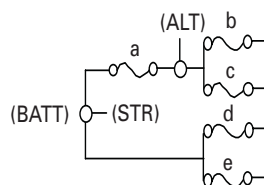
Schematics



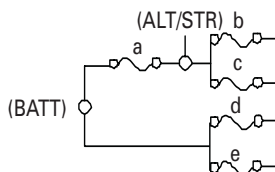
Schematic A



Schematic B

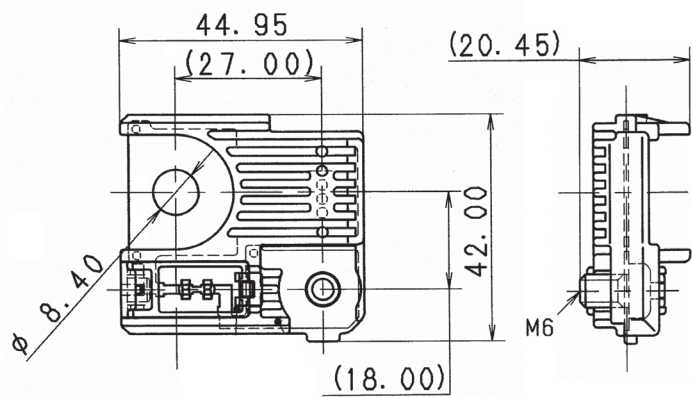


Schematic C

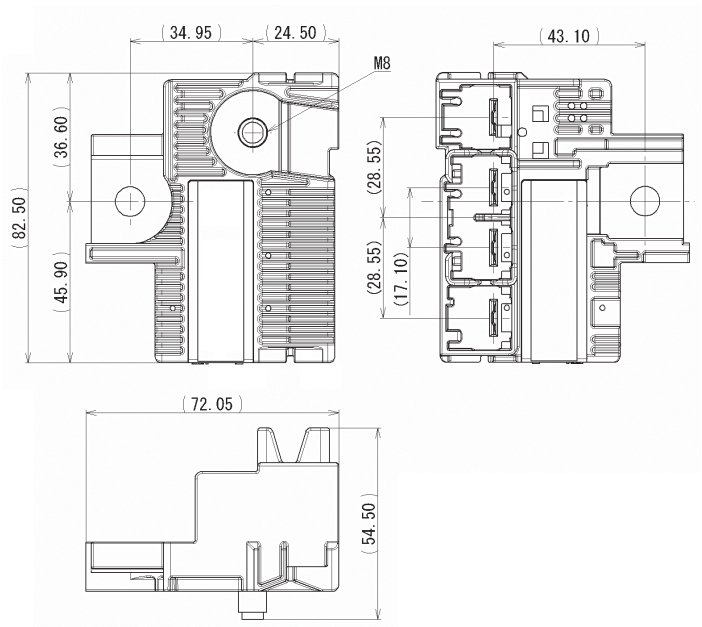


Schematic D

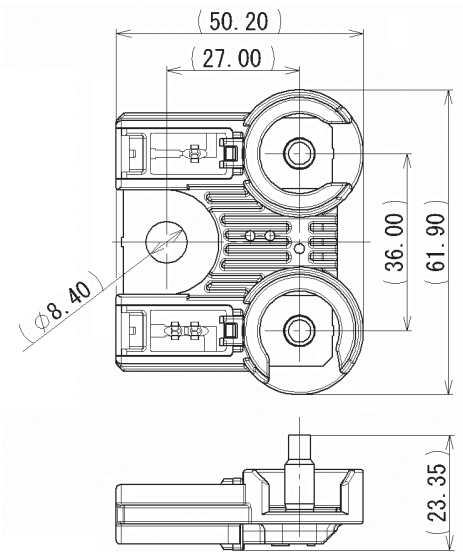
Dimensions - mm
BTF-1P



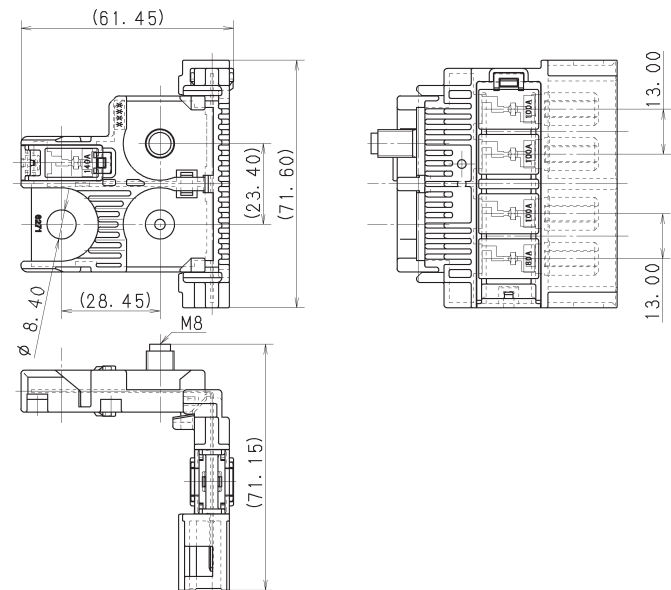
BTF-3P



BTF-2P



BTF-5P



The only controlled copy of this data sheet is the electronic read-only version located on the Eaton network drive. All other copies of this document are by definition uncontrolled. This bulletin is intended to clearly present comprehensive product data and provide technical information that will help the end user with design applications. Eaton reserves the right, without notice, to change design or construction of any products and to discontinue or limit distribution of any products. Eaton also reserves the right to change or update, without notice, any technical information contained in this bulletin. Once a product has been selected, it should be tested by the user in all possible applications.

Eaton
1000 Eaton Boulevard
Cleveland, OH 44122
Eaton.com

Bussmann Division
114 Old State Road
Ellisville, MO 63021
United States
Eaton.com/bussmannseries

© 2017 Eaton
All Rights Reserved
Printed in USA
Publication No. 10605 — BU-MC16116
October 2017

Eaton and Bussmann are valuable trademarks of Eaton in the U.S. and other countries. You are not permitted to use the Eaton trademarks without prior written consent of Eaton.

Chrysler is a registered trademark of Fiat Chrysler Automobiles
Ford, Lincoln, Mercury are registered trademarks of the Ford Motor Company.
Mitsubishi are registered trademarks of Mitsubishi Motors.
Nissan is a registered trademark of the Nissan Motor Company.
Lexus, Scion and Toyota are registered trademarks of the Toyota Motor Company.
Subaru is a registered trademark of Fuji Heavy Industries.
Suzuki is a registered trademark of the Suzuki Motor Corporation.

For Eaton's Bussmann series product information, call **1-855-287-7626** or visit: **Eaton.com/BussmannConsumer**

Follow us on social media to get the latest product and support information.

