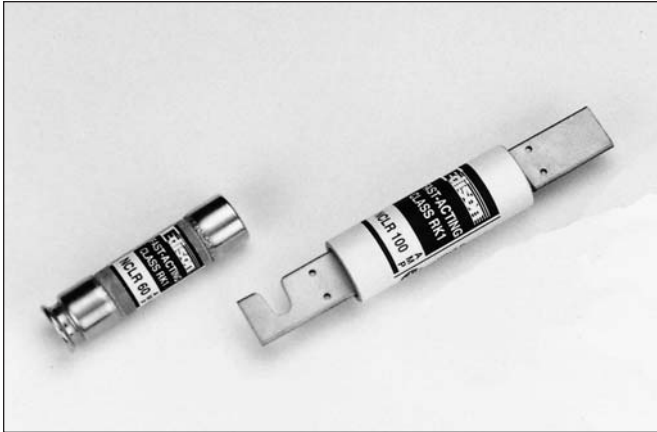


NCLR

Class RK1 250Vac, 1 to 600A

Fast-Acting Fuses



Catalog Symbol: NCLR (250V)

Fast-Acting

Current-Limiting

Volts: 250Vac (or less)

Amps: 1 to 600A

IR: 200kA RMS Sym.

Tube Material: Glass Melamine

Operating Temp.: -40°C to +85°C

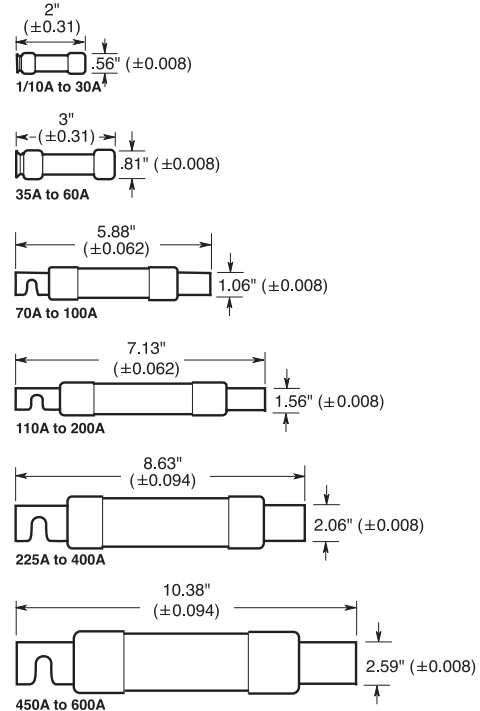
Storage Temp.: -55°C to +85°C

Agency Information: CE, UL Listed, Std. 248-12, Class RK1, Guide JDDZ, File E162363, CSA Certified, HRCI-R per C22.2 No. 248.12, Class 1422-02, File 53787

Features

- Single-element, fast-acting fuses with minimal time-delay.
- Provides a high degree of short-circuit current-limitation (component protection).
- Particularly suited for circuits and loads with no heavy surge currents of motors, transformers, solenoids, and welders.
- NCLR fuses are commonly used to protect circuit breakers with lower interrupting ratings.
- If used in circuits with surge currents (motors, etc.) must be sized to prevent unwanted opening and thus only provide short-circuit protection.
- Incorporates Class R rejection feature. Can be inserted in non-rejection type fuse holders. Thus, can physically and electrically replace fast-acting Class H, K1, K5, RK5, and other fast-acting fuses.

Dimensions (inches)



Catalog Numbers (amps)

| | | | |
|--------|--------|---------|---------|
| NCLR1 | NCLR20 | NCLR80 | NCLR250 |
| NCLR3 | NCLR25 | NCLR90 | NCLR300 |
| NCLR4 | NCLR30 | NCLR100 | NCLR350 |
| NCLR5 | NCLR35 | NCLR110 | NCLR400 |
| NCLR6 | NCLR40 | NCLR125 | NCLR450 |
| NCLR8 | NCLR45 | NCLR150 | NCLR500 |
| NCLR10 | NCLR50 | NCLR175 | NCLR600 |
| NCLR12 | NCLR60 | NCLR200 | |
| NCLR15 | NCLR70 | NCLR225 | |

Carton Quantity and Weight

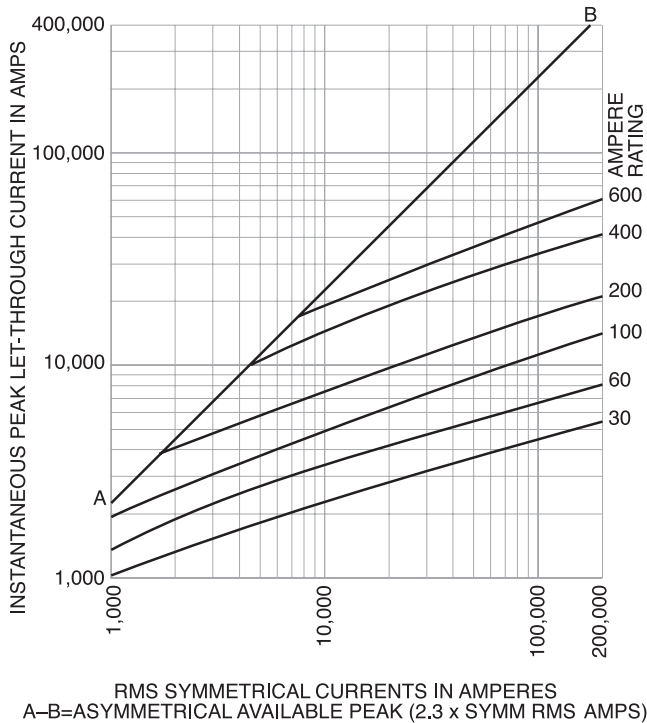
| Amps | Carton Quantity | Weight per Carton | |
|---------|-----------------|-------------------|------|
| | | lbs | kg |
| 1-30 | 10 | 0.45 | 0.20 |
| 40-60 | 10 | 1.82 | 0.82 |
| 70-100 | 5 | 1.85 | 0.84 |
| 110-200 | 1 | 1.05 | 0.48 |
| 225-400 | 1 | 2.38 | 1.08 |
| 450-600 | 1 | 3.50 | 1.59 |

NCLR

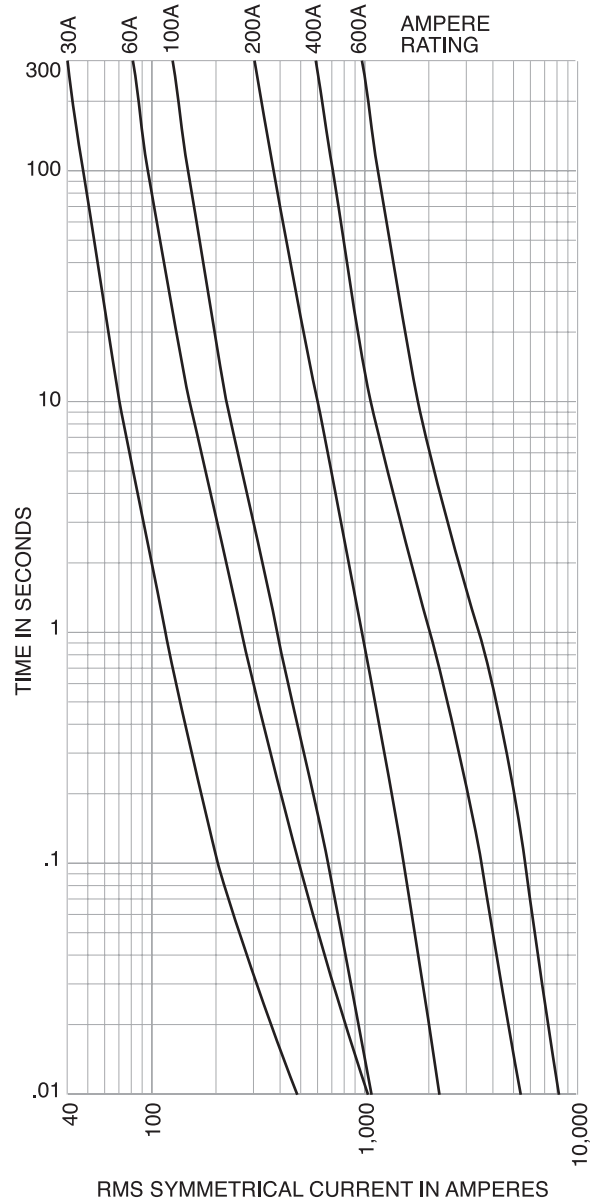
Class RK1 250Vac, 1 to 600A

Fast-Acting Fuses

Current Limitation Curves



Time-Current Characteristic Curves- Average Melt



Class RK1 Fuse Blocks (250V) Catalog Data

(Clip Retaining Spring Standard, Suffix "R")

| Amps | Pole | Basic Catalog Number | Terminal Type (Suffix No.) | | | | |
|--------|------|----------------------|----------------------------|----------------|---------|-----------------|------------------|
| | | | Screw | | Box Lug | | |
| | | | — | w/ Pres. Plate | — | w/ Clip CU only | ¼" Quick Connect |
| 0.1 | 1 | R25030-1 | SR | PR | CR | COR | QR* |
| to | 2 | R25030-2 | SR | PR | CR | COR | QR* |
| 30 | 3 | R25030-3 | SR | PR | CR | COR | QR* |
| 31 | 1 | R25060-1 | SR* | — | CR | COR | — |
| to | 2 | R25060-2 | SR* | — | CR | COR | — |
| 60 | 3 | R25060-3 | SR* | — | CR | COR | — |
| 61 | 1 | R25100-1 | — | — | CR | COR | — |
| to | 2 | R25100-2 | — | — | CR | COR | — |
| 100 | 3 | R25100-3 | — | — | CR | COR | — |
| 101 to | 1 | R25200-1 | — | — | CR | COR | — |
| 200 | 3 | R25200-3 | — | — | CR | COR | — |
| 201 to | 1 | R25400-1 | — | — | CR* | COR* | — |
| 400 | 3 | R25400-3 | — | — | CR | COR* | — |
| 401 to | 1 | R25600-1 | — | — | CR | — | — |
| 600 | 3 | R25600-3 | — | — | CR | — | — |

*UL Recognized, No CSA Certification.

The only controlled copy of this document is the electronic read-only version maintained by Cooper Bussmann. All other copies of this document are by definition uncontrolled. This bulletin is intended to clearly present comprehensive product data and provide technical information that will help the end user with design applications. Cooper Bussmann reserves the right, without notice, to change design or construction of any products and to discontinue or limit distribution of any products. Cooper Bussmann also reserves the right to change or update, without notice, any technical information contained in this bulletin. Once a product has been selected, it should be tested by the user in all possible applications.