

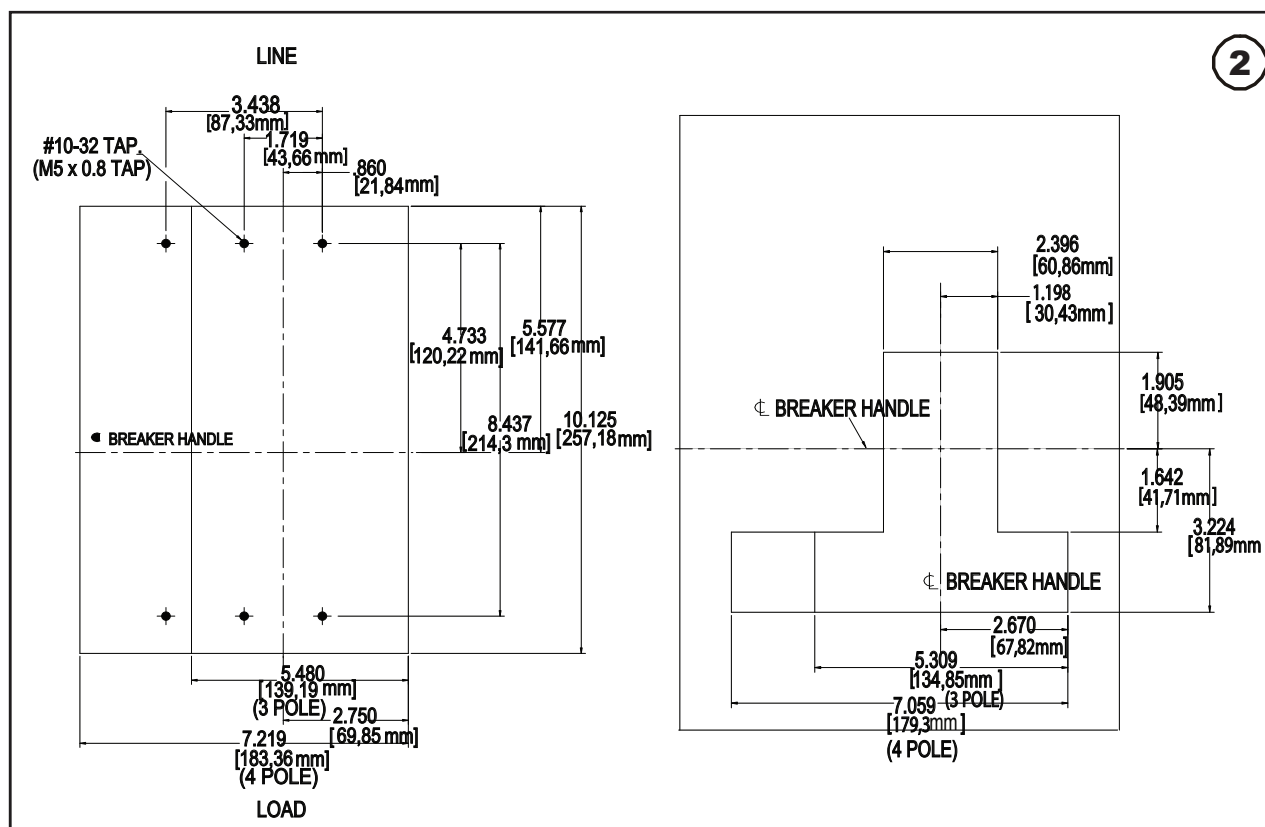
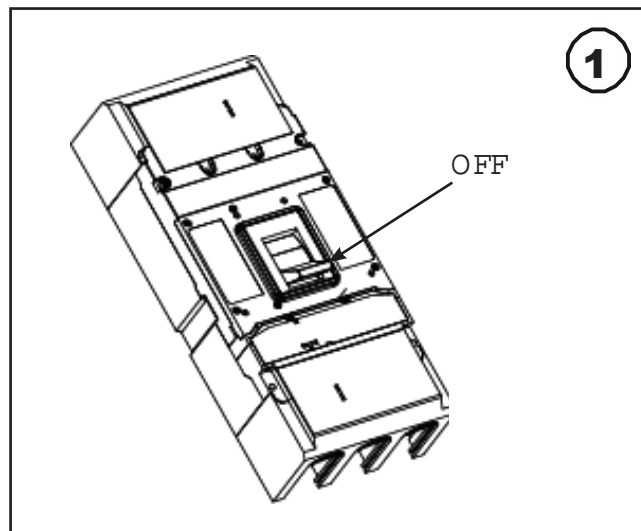
Installation Instructions for LG-DC Frame Circuit Breakers and Molded Case Switches



WARNING

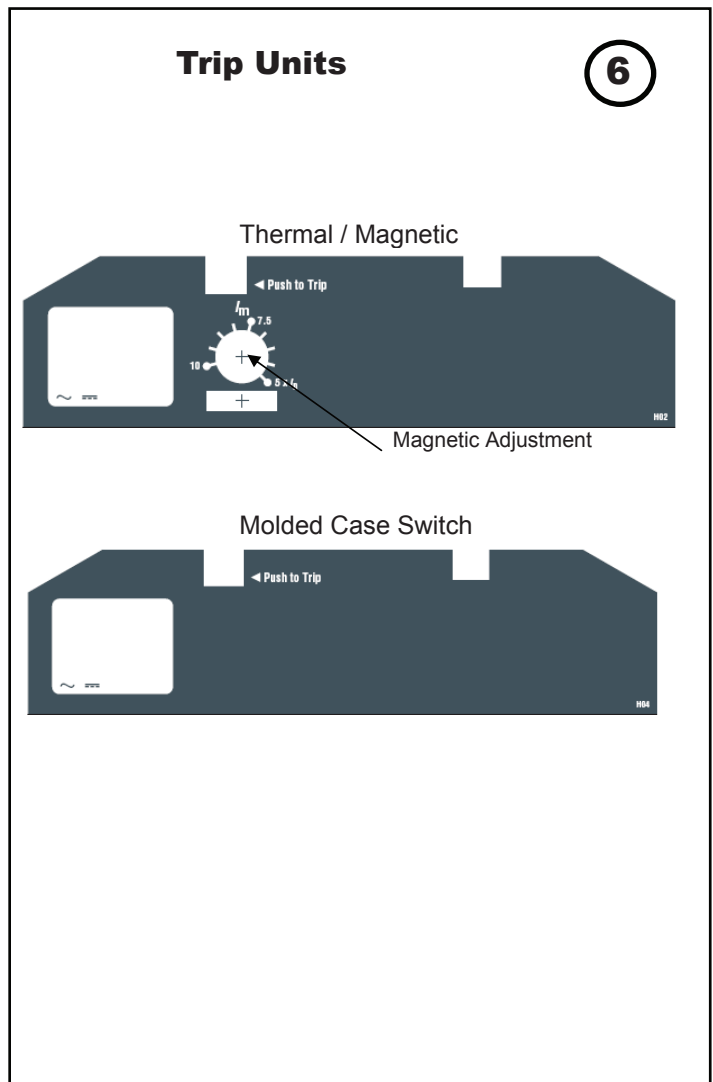
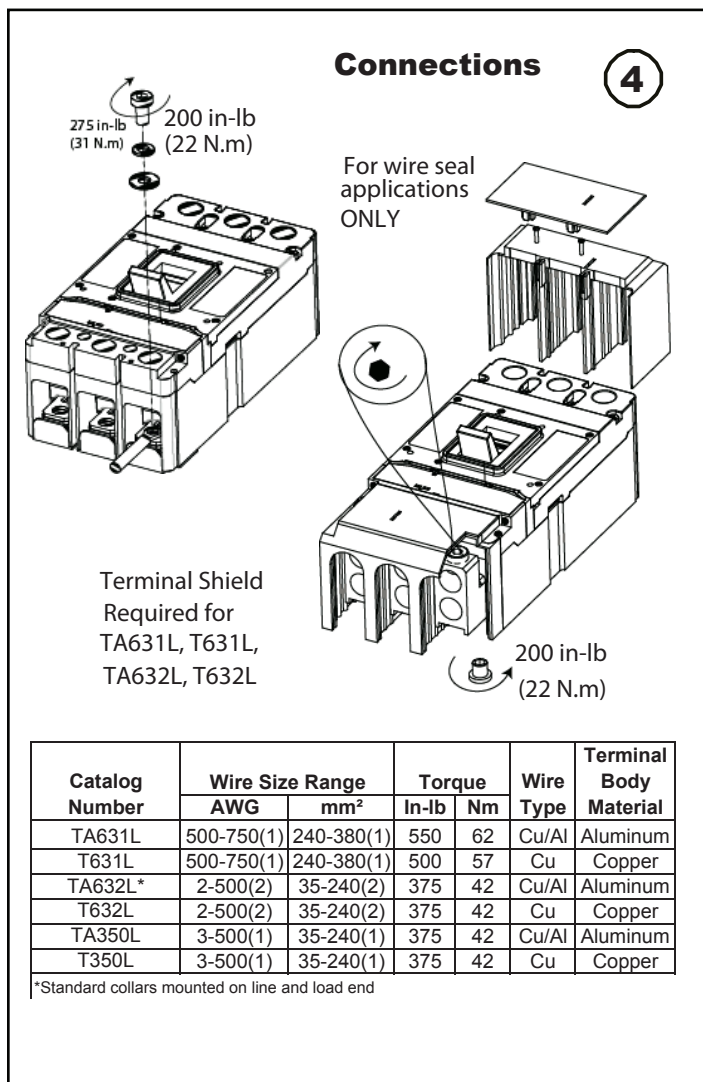
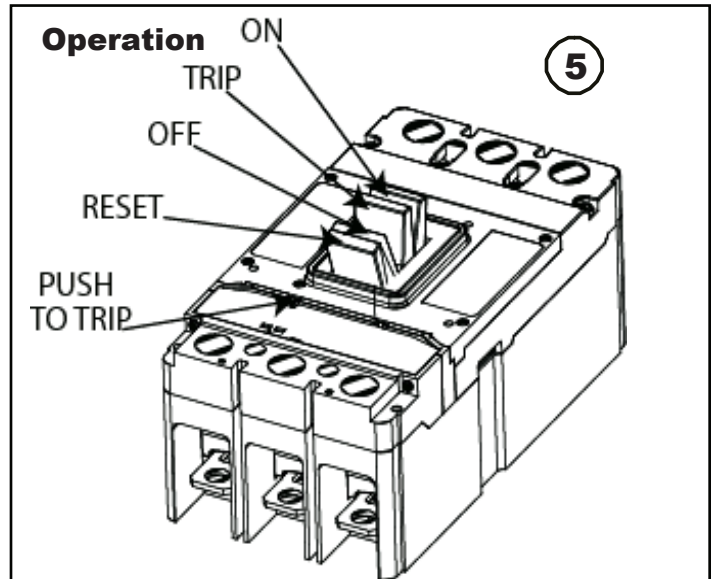
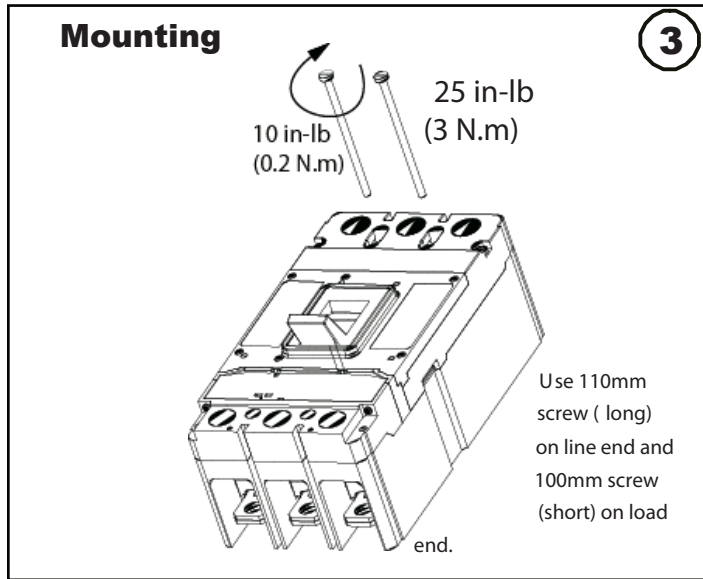


DO NOT ATTEMPT TO INSTALL OR PERFORM MAINTENANCE ON EQUIPMENT WHILE IT IS ENERGIZED. DEATH OR SEVERE PERSONAL INJURY CAN RESULT FROM CONTACT WITH ENERGIZED EQUIPMENT. ALWAYS VERIFY THAT NO VOLTAGE IS PRESENT BEFORE PROCEEDING.



EATON

Powering Business Worldwide



Connection Diagram**7**

Suitable for use on ungrounded systems as well as grounded systems that have one end of load (figure 1-2A) connected to power supply.

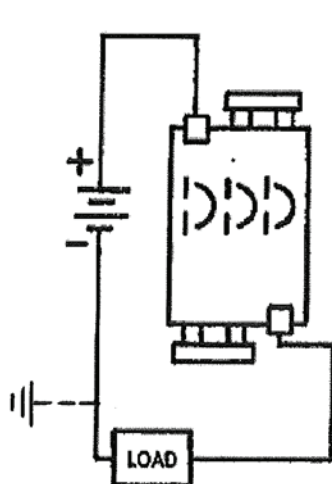
3-Pole In Series

Fig. 1-2A

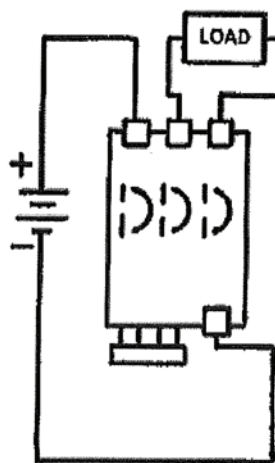


Fig. 1-2B

Use Rated Cable per N.E.C. and connect to
Terminals as per Breaker Nameplate.

