

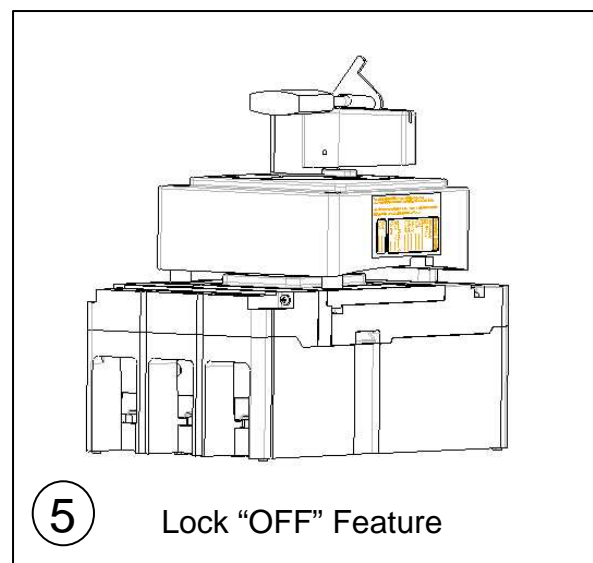
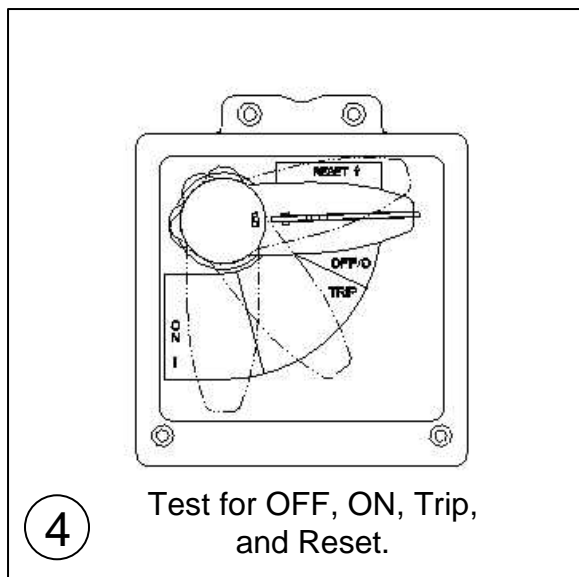
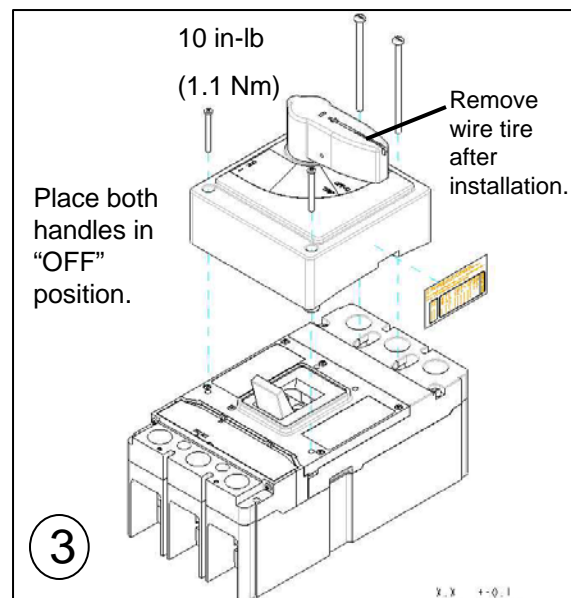
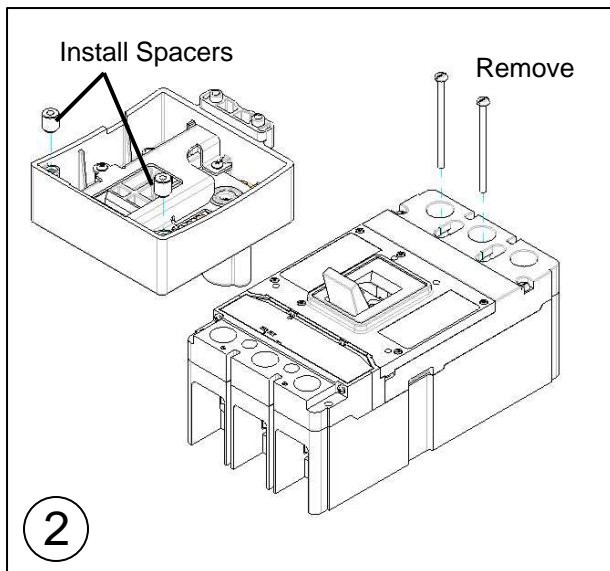
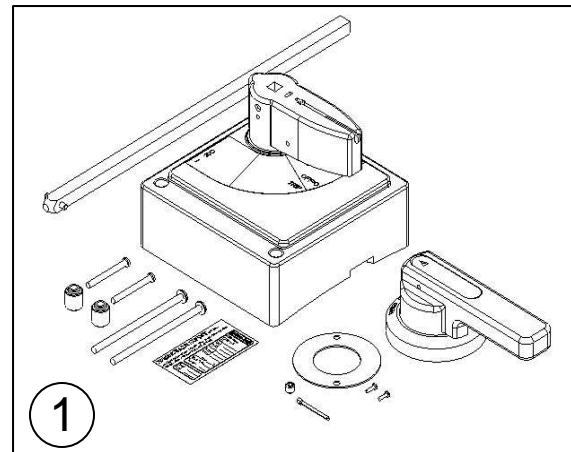
LG Variable Depth Rotary Handle Mechanism (1/12)



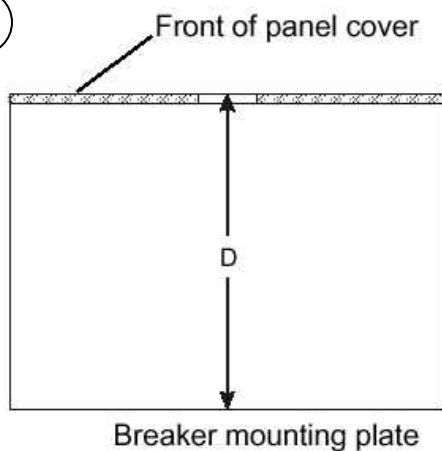
Warning



DO NOT ATTEMPT TO INSTALL OR PERFORM MAINTENANCE ON EQUIPMENT WHILE IT IS ENERGIZED. DEATH OR SEVERE PERSONAL INJURY CAN RESULT FROM CONTACT WITH ENERGIZED EQUIPMENT. ALWAYS VERIFY THAT NO VOLTAGE IS PRESENT BEFORE PROCEEDING.



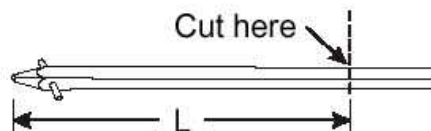
6



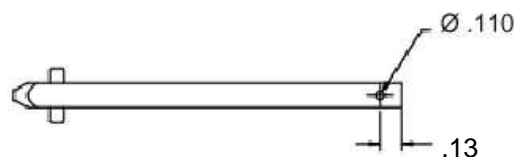
$$L = D - 6.46''$$

$$[L = D - 164 \text{ mm}]$$

1. Cut shaft to length.

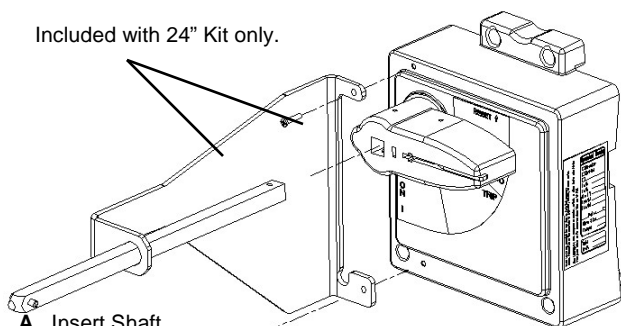


2. Drill hole in shaft.



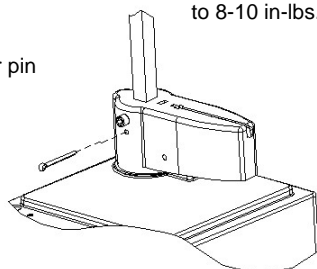
7

Included with 24" Kit only.

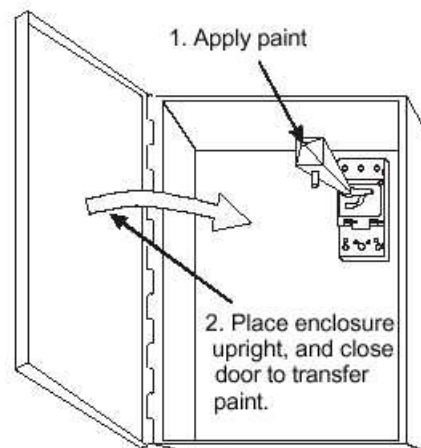


B. Torque set screw to 8-10 in-lbs.

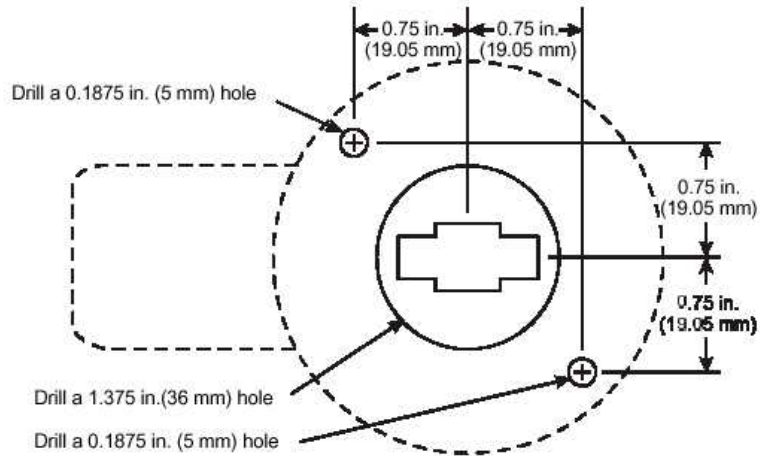
C. Insert cotter pin through handle and shaft.



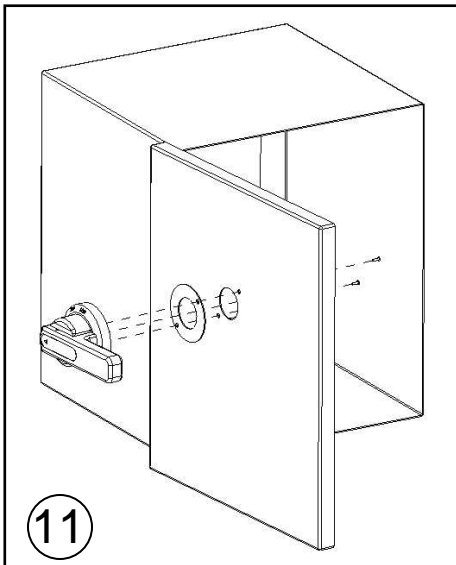
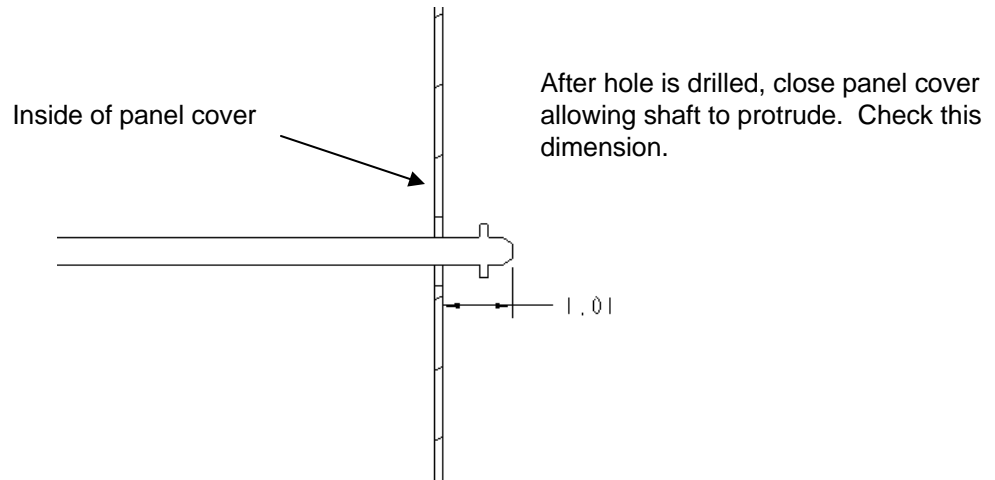
8



9

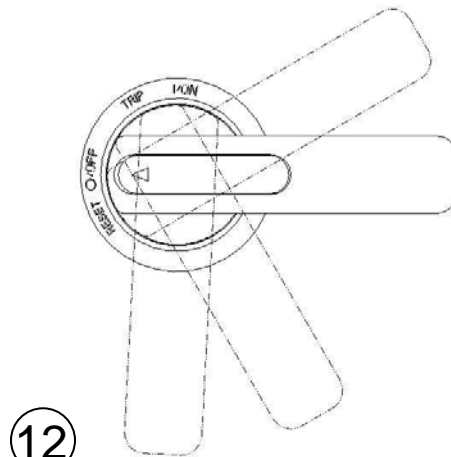


10



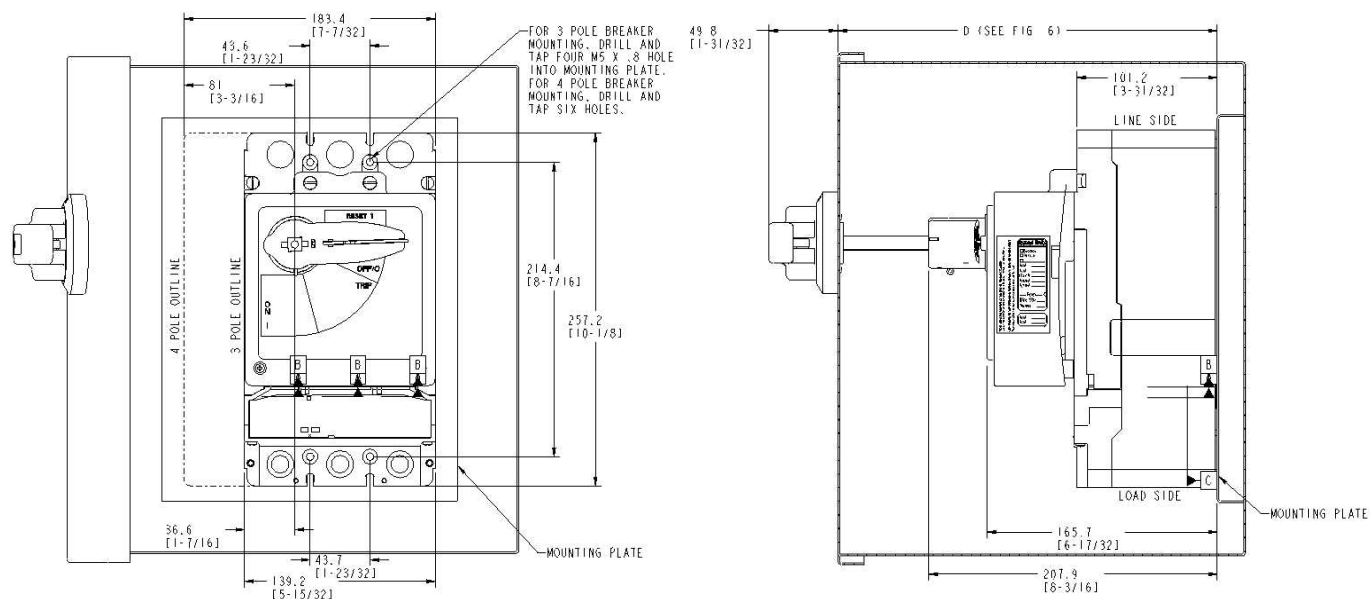
11

Test for full range of motion.

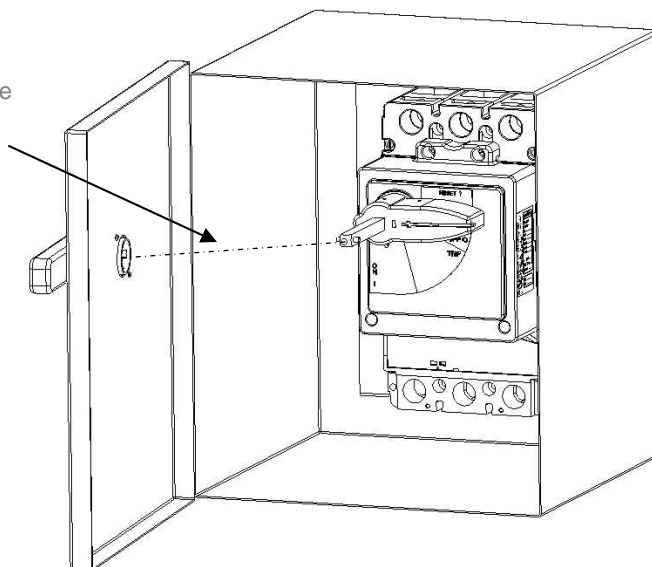


12

13



Verify alignment between rotary handle and the shaft to prevent binding of the shaft during tripping.



©2001 Eaton Corporation

All Rights Reserved

Printed USA

Publication No. IL01219023EH03

Effective October 2008

EATON