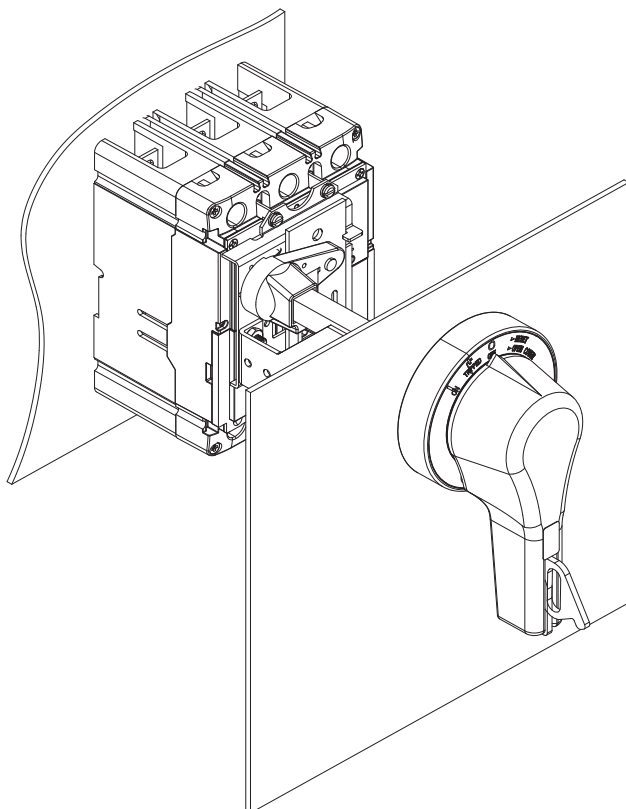


# Instructions for Drilling and Assembling Rotary Handle Mechanism for PD2 Circuit Breakers, Molded Case Switches, and HMCPs



## Contents

Description	Page
1. Description . . . . .	2
2. Installation Instruction . . . . .	2

**WARNING**

**DO NOT ATTEMPT TO INSTALL OR PERFORM MAINTENANCE ON EQUIPMENT WHILE IT IS ENERGIZED. DEATH, SEVERE PERSONAL INJURY, OR SUBSTANTIAL PROPERTY DAMAGE CAN RESULT FROM CONTACT WITH ENERGIZED EQUIPMENT. ALWAYS VERIFY THAT NO VOLTAGE IS PRESENT BEFORE PROCEEDING WITH THE TASK, AND ALWAYS FOLLOW GENERALLY ACCEPTED SAFETY PROCEDURES.**

**EATON IS NOT LIABLE FOR THE MISAPPLICATION OR MISINSTALLATION OF ITS PRODUCTS.**

The User is cautioned to observe all recommendations, warnings, and cautions relating to the safety of personnel and equipment as well as all general and local health and safety laws, codes, and procedures.

The recommendations and information contained here in are based on Eaton's experience and judgment, but should not be considered to be all-inclusive or covering every application or circumstance which may arise. If any questions arise, contact Eaton for further information or instructions.

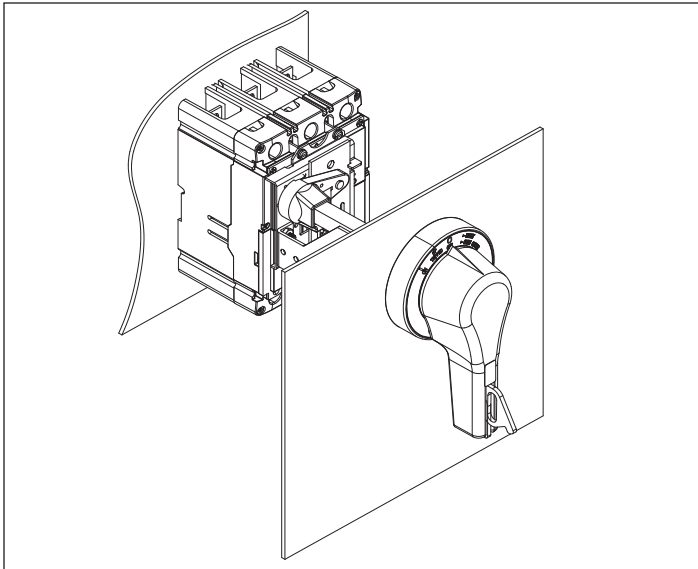


Figure 1. Rotary Handle Mechanism Assembly.

**Description**

The Eaton general purpose Rotary Handle mechanism is suitable for use with NEMA1, 3R, 12, 4, and 4X fabricated enclosures. It is designed for use with PD2 Frame circuit breakers, molded case switches, and motor circuit protectors (HMCP) up to 225 amps.

Required for a standard application are the operating handle, shaft, and mechanism.

The handle maybe mounted in either the horizontal or vertical direction. The handle was ergonomically designed with extra clearance for a "gloved hand" to operate. It may be padlocked in the Off position utilizing three padlocks (0.312" [7.93 mm] Max).

The standard label on the operating handle indicates ON/Tripped/OFF/Reset. To fulfill international requirements, an alternate handle maybe ordered which indicates(I)/Tripped/(O)/Reset.

To meet the various enclosure depths, four variable depth shafts are offered (6, 12, 16, and 24") (152.4, 304.8, 406.4, and 609.6 mm). Each shaft includes a support brace to ensure proper alignment. In addition, the 16 and 24" (406.4 and 609.6 mm) extra long shafts include an adjustable support bracket.

The standard mechanism located on the breaker does include means for internally locking the breaker in the "Off" position with up to three padlocks each with a maximum diameter of .312" (7.93 mm).

As an option, an auxiliary switch is offered so that the control panel builder may electrically indicate the status of the breaker. This accessory would be mounted on the mechanism and comes with 24" (609.6 mm) pigtail leads.

**Installation Instructions**

The installation procedure consists of: drilling and modifying customer enclosure; installing the circuit breaker and operating assembly; assembling the shaft to the operating assembly, and handle assembly to the enclosure cover; and testing function of installed handle mechanism. To install the handle mechanism, perform the following steps.

**WARNING**

**WHEN INSTALLING A NEW HANDLE MECHANISM, OR A NEW CIRCUIT BREAKER AND HANDLE MECHANISM IN AN EXISTING ELECTRICAL SYSTEM, MAKE SURE THERE IS NO VOLTAGE PRESENT WHERE WORK IS TO BE PERFORMED. SPECIAL ATTENTION SHOULD BE PAID TO REVERSE FEED APPLICATIONS TO ENSURE NO VOLTAGE IS PRESENT. THE VOLTAGES IN ENERGIZED EQUIPMENT CAN CAUSE DEATH OR SEVERE PERSONAL INJURY.**

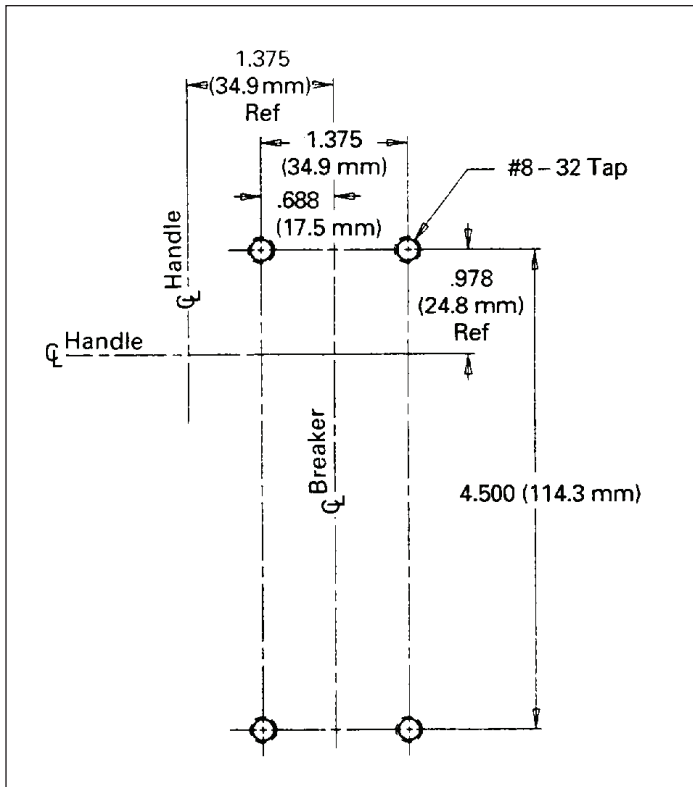


Figure 2. Drill and Tapping Plan for PD2 Breaker.

### Installation of Circuit Breaker and Operating Assembly

1. Determine the position for circuit breaker in the enclosure. Drill and tap the circuit breaker mounting holes in enclosure mounting surface as shown in Figure 2.
2. Mount the circuit breaker to enclosure using the four standoffs in the hardware kit. Tighten securely into tapped holes from Step 1 (see Figure 3).
3. Turn the circuit breaker to the "OFF" position.
4. Measure the panel depth "D" per Figure 4. If "D" is less than 7" (179 mm), remove the shaft support bracket from the operating assembly and discard.
5. Mount the mechanism on to the circuit breaker, ensuring the slide plate is engaged with the circuit breaker handle. Insert the four screws, two flat washers (load side of base plate), and four lock washers from the hardware kit into the standoffs (see Figure 3).

### Installation of Shaft to Operating Assembly

1. Using panel depth "D" from Step 4 above, determine the shaft length by subtracting 3.00" (76.2 mm) from this dimension.
2. Mark the shaft, measuring the length beginning at the pointed end, and cut to the correct length (see Figure 4).
3. If the adjustable support extension is being used (designed for 16" and 24" shaft lengths), install it loosely at this time. Remove the screws from the extension and use them to attach to shaft support bracket.

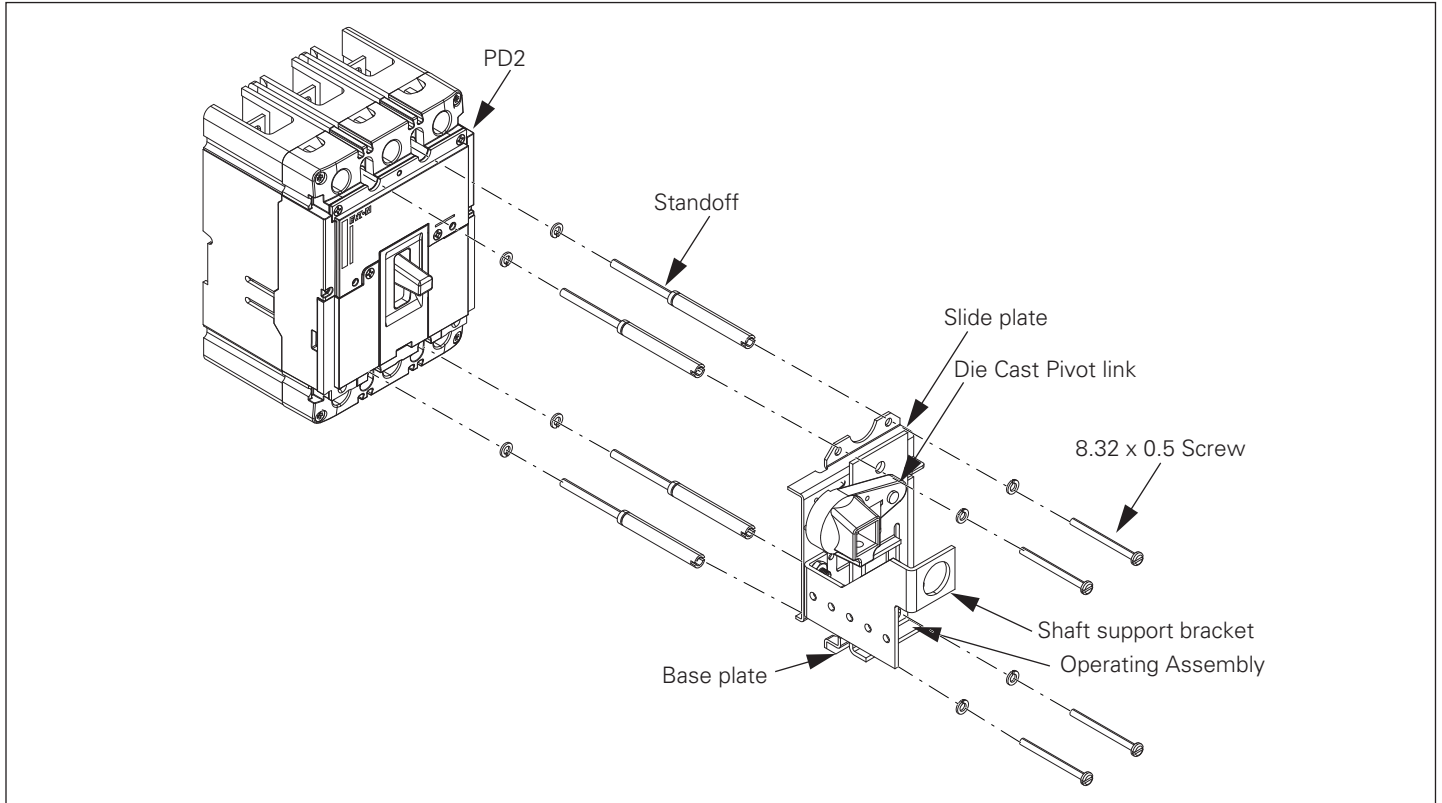
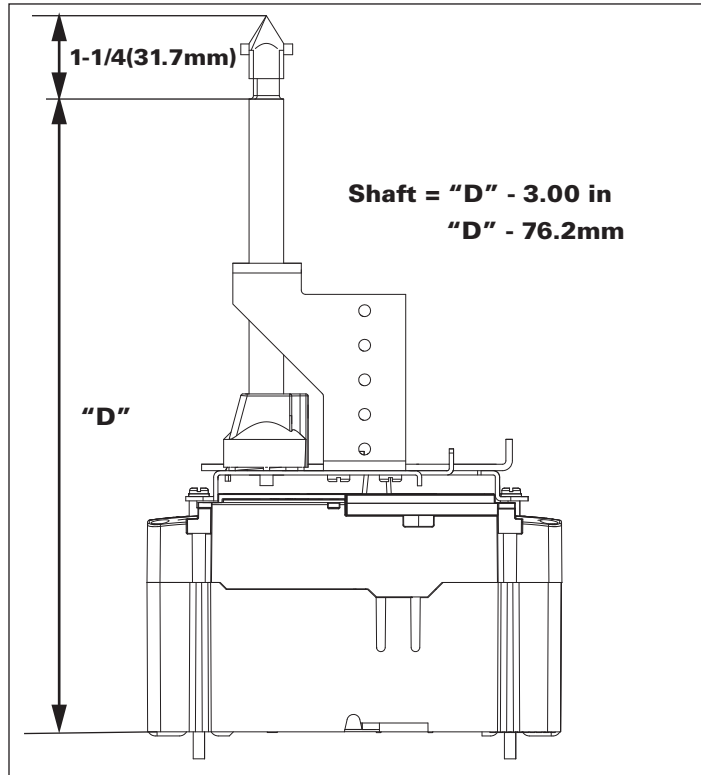


Figure 3. PD2 Breaker/Mechanism Assembly.

4. Place the square end of shaft into the square opening of die cast pivot link on the operating mechanism attached to the circuit breaker. Ensure the pin is in the shaft and correctly oriented with respect to anticipated handle position (vertical or horizontal handle placement, see Figure 5). Insert the set screw from the hardware kit into pivot link and torque to 50 lb.-in (5-6 N•m).
5. If the adjustable support extension is being used, tighten the set screw securely at this time.



**Figure 4. Cutting the Shaft to Length.**

#### Installation of the Handle Assembly onto Enclosure Cover

1. To determine where to drill the enclosure door cover, close the cover with moderate force in order to cause the point of the shaft to scratch/mark the paint on the inside of the door.
2. Prior to drilling the 1.50" (38.1 mm) diameter hole in the cover door, use correction factor per Table 4.1. Correction should be made from the mark on the door (Step 1) towards the hinge. Drill 1.50" (38.1 mm) hole.
3. After the hole is drilled, close the enclosure cover, allowing the shaft to stick through the opening. Check this dimension per Figure 4. If the dimension is not correct, loosen the set screw holding the shaft in the die cast pivot link and adjust such that the dimension is within the required limits. Retighten set screw.
4. Close the enclosure door. Place the gasket/template supplied in hardware kit. Place the template over the shaft ensuring the text/wording is facing outward. With the use of your fingers, remove any play by rotating the shaft in a clockwise motion. Align the template cutout with the shaft profile and mark the handle mounting holes. Drill four 0.281" (7.14 mm) diameter holes.

**Table 1. Correction Factor Table.**

Distance From Hinge	Correction	
	Flat Hinge	Offset Hinge
4	3/16" (4.8 mm)	9/16" (14.3 mm)
5	5/32" (4.0 mm)	7/16" (11.1 mm)
6	1/8" (3.2 mm)	11/32" (8.7 mm)
7	3/32" (2.4 mm)	9/32" (7.1 mm)
8	3/32" (2.4 mm)	1/4" (6.4 mm)
9	3/32" (2.4 mm)	7/32" (5.6 mm)
10	1/16" (1.6 mm)	3/16" (4.8 mm)
11	1/16" (1.6 mm)	3/16" (4.8 mm)
12	1/16" (1.6 mm)	5/32" (4.0 mm)

5. Carefully remove the inner portion of the gasket/template keeping the outer gasket ring and place it between the handle assembly and the door. If this installation is a NEMA 4 or 4X, use the neoprene gasket supplied with the hardware kit. Loosely drive the four 0.25-20 x 0.5" screws through both the door and gasket from the inside of the enclosure door cover and into the handle assembly. Tighten evenly to 43 - 44 in-lbs (4.8 - 5.0 N•m).
6. With the power isolated from the circuit breaker, test the function of installed handle mechanism in the following manner:
  - A. Close the enclosure door. Switch the handle mechanism to ON.
  - B. Check that the handle mechanism switches the circuit breaker to the ON position and that the enclosure door cannot be opened.
  - C. Switch the handle mechanism to OFF position.
  - D. Check that the handle mechanism switches the circuit breaker to OFF position and that the enclosure door cannot be opened.
  - E. Turn the handle to OPEN COVER position and ensure the door opens.
  - F. Close the enclosure door. Switch the handle mechanism/circuit breaker to ON.
  - G. Turn the interlock defeater counter-clockwise with a flat blade screw driver.
  - H. Open the enclosure door.
  - I. Press the Push-To-Trip button in the circuit breaker trip unit with a small flat-blade screw driver to trip circuit breaker.
  - J. Align the handle assembly with the shaft and close enclosure door.
  - K. Switch the handle mechanism to the OPEN COVER (RESET) position. Check to ensure the breaker resets.
7. After the door has been drilled and the shaft and handle interaction have been verified, it is suggested to remove the point from the end of the shaft (see Figure 6).
  - A. Grip the removable point with a pair of pliers (see Figure 7).
  - b. With a slight twisting motion of the pliers, remove the point (see Figure 8).

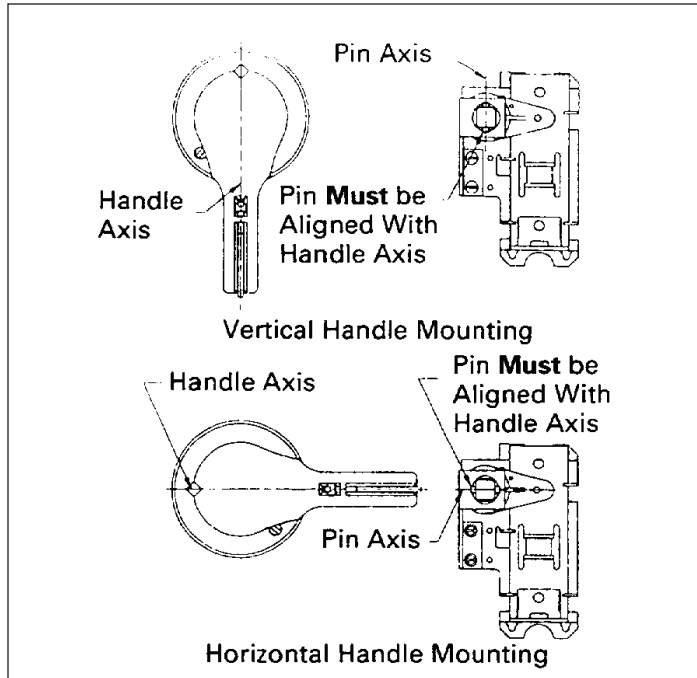


Figure 5. Horizontal Handle Mounting.

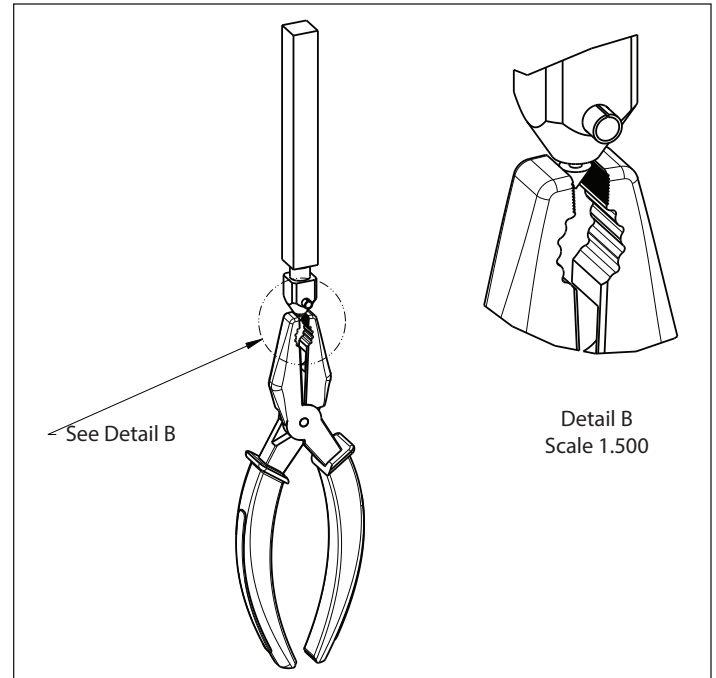


Figure 7. Removing the Point with Pliers.

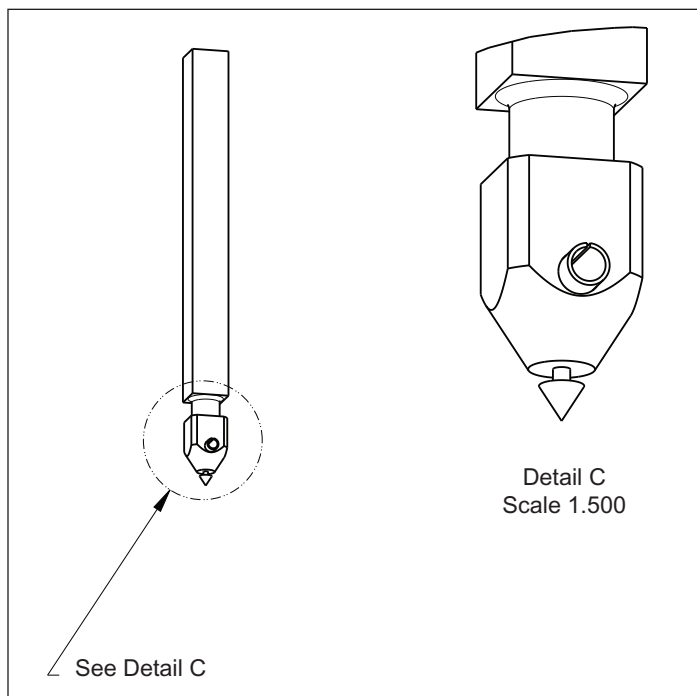


Figure 6. Shaft and Handle.

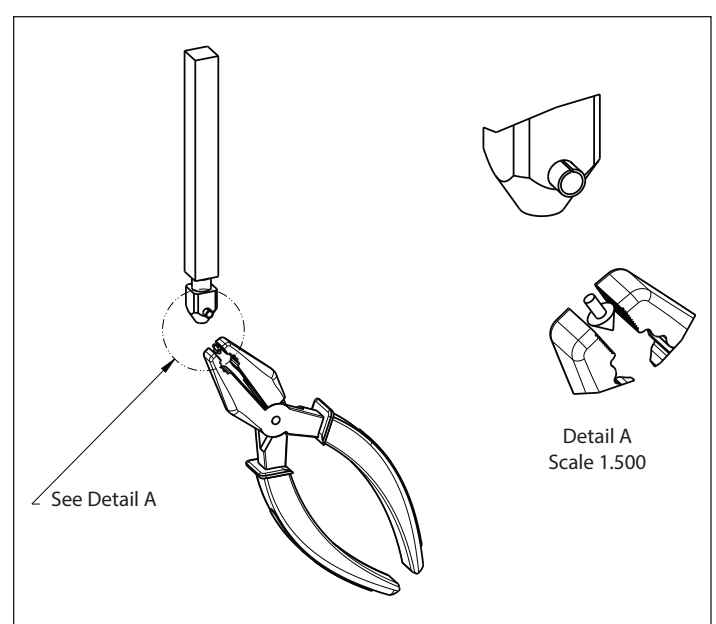


Figure 8. Twisting to Remove the Point.

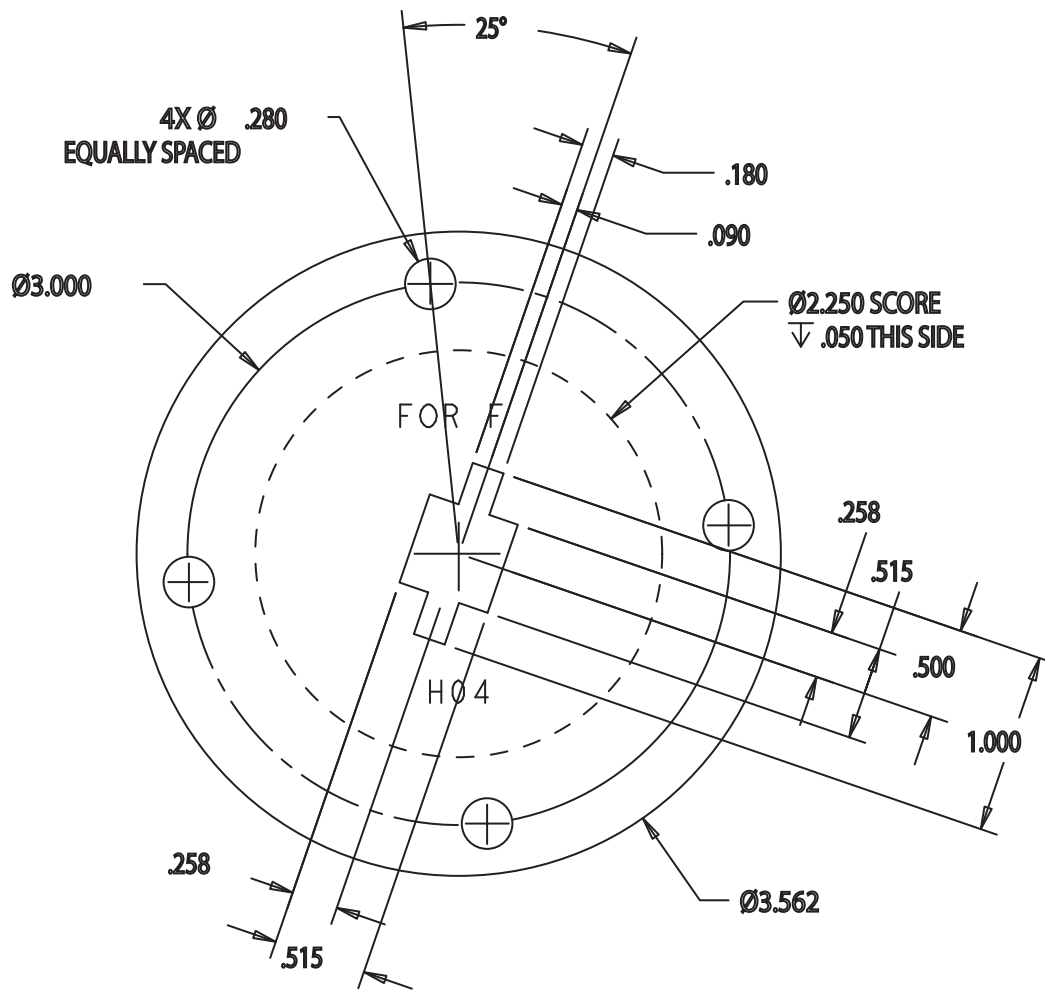


Figure 9. Door Drilling/Cutout Template (Note: Not to Scale).

Instructions for Drilling and Assembling Rotary Handle  
Mechanism for PD2 Circuit Breakers, Molded Case  
Switches, and HMCPs

Instruction Leaflet **IL012356EN**

Effective August 2020

**Notes:**

The instructions for installation, testing, maintenance, or repair herein are provided for the use of the product in general commercial applications and may not be appropriate for use in nuclear applications. Additional instructions may be available upon specific request to replace, amend, or supplement these instructions to qualify them for use with the product in safety-related applications in a nuclear facility.

This Instruction Booklet is published solely for information purposes and should not be considered all-inclusive. If further information is required, you should consult an authorized Eaton sales representative.

The sale of the product shown in this literature is subject to the terms and conditions outlined in appropriate Eaton selling policies or other contractual agreement between the parties. This literature is not intended to and does not enlarge or add to any such contract. The sole source governing the rights and remedies of any purchaser of this equipment is the contract between the purchaser and Eaton.

**NO WARRANTIES, EXPRESSED OR IMPLIED, INCLUDING WARRANTIES OF FITNESS FOR A PARTICULAR PURPOSE OR MERCHANTABILITY, OR WARRANTIES ARISING FROM COURSE OF DEALING OR USAGE OF TRADE, ARE MADE REGARDING THE INFORMATION, RECOMMENDATIONS, AND DESCRIPTIONS CONTAINED HEREIN.**

In no event will Eaton be responsible to the purchaser or user in contract, in tort (including negligence), strict liability or otherwise for any special, indirect, incidental or consequential damage or loss whatsoever, including but not limited to damage or loss of use of equipment, plant or power system, cost of capital, loss of power, additional expenses in the use of existing power facilities, or claims against the purchaser or user by its customers resulting from the use of the information, recommendations and description contained herein.

**Eaton**  
Electrical Sector  
1000 Eaton Boulevard  
Cleveland, OH 44122  
United States  
877-ETN-CARE (877-386-2273)  
Eaton.com

© 2020 Eaton  
All Rights Reserved  
Printed in USA  
Publication No. IL012356EN  
Part No. IL012356ENH02  
August 2020