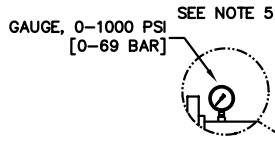


	DIM 'A'
2	40" [1016]
3	40" [1016]
4	52" [1321]
5	64" [1626]
6	76" [1930]
7	88" [2235]
8	100" [2540]
9	112" [2845]
10	124" [3150]

NORDEL (EPT)	VITON (VIT)
1000 PSI [69 BAR] 300°F [149°C]	1000 PSI [69 BAR] 350°F [176°C]

FOR PLOT PLAN DIMENSIONS SEE AFC-2200-XX-PV001



CONTROL PANEL SEE NOTE 4

SEE AFC-2200-IB-FP002 FOR TOP VIEW

AUTOMATIC MANUAL

OUTLET - 4"

SEE AFC-2200-IB-RE002 FOR RIGHT SIDE VIEW

INLET - 4"

DRAIN - 3"

CONCRETE FOUNDATION

12 [305] TYP.

A

NOTES:

- ALL FLANGED PROCESS CONNECTIONS ARE LAP JOINT TYPE, ZINC PLATED CARBON STEEL.
- PROCESS FLANGE CONNECTIONS ARE DRILLED TO ANSI, CLASS 300 OR 600, OR CUSTOMER SPECIFIED DIN EQUIVALENT.
- HEADERS MAY BE PIPED AT EITHER END; BLIND FLANGES (PURCHASER SUPPLIED) REQUIRED FOR OPPOSITE END.
- CONTROL PANEL IS EXCLUSIVE TO AUTOMATED UNITS.
- 1/4" VALVES (ON INLET/OUTLET HEADERS) ARE EXCLUSIVE TO AUTOMATED UNITS. MANUAL UNITS ARE EQUIPPED WITH GAUGES (1/4" NPT) AT THESE POSITIONS.
- ALL METALLIC WETTED PARTS ARE 316 STAINLESS STEEL.
- AUTOMATION AIR REQUIREMENTS: 5 SCFM [142 LITERS/MIN] MAXIMUM DEMAND AT 60 PSI [4.1 BAR] MIN, 120 PSI [8.2 BAR] MAX.
- ALL DIMENSIONS ARE IN INCHES WITH METRIC EQUIVALENTS IN BRACKETS [].
- FILTER ELEMENTS ARE DESIGNED TO WITHSTAND 150 PSI [10.3 BAR] DIFFERENTIAL PRESSURE.
- OPERATING PRESSURE IS UP TO 1000 PSI [69 BAR]. HYDROSTATIC TEST PRESSURE IS 1000 PSI [69 BAR].
- EXTERIOR FINISH:
TOP COAT: 1 MIL MINIMUM.
COLOR: SILVER
- HANDLES ARE PROVIDED AT EACH STATION ON MANUAL UNITS.

REFERENCE ONLY



EATON FILTRATION, LLC
RONNINGEN-PETTER PRODUCTS
9151 SHAVER ROAD
PORTAGE, MICHIGAN 49024-6798 USA

THIS DRAWING AND ALL INFORMATION THEREON IS THE PROPERTY OF EATON CORPORATION. IT IS CONFIDENTIAL AND MUST NOT BE MADE PUBLIC. THIS DRAWING IS LOANED SUBJECT TO RETURN ON DEMAND, AND IS NOT TO BE USED DIRECTLY OR INDIRECTLY, IN ANY WAY DETRIMENTAL TO THE INTERESTS OF EATON FILTRATION, LLC.

ENGINEERING APPROVAL .	DRAWN BY B. STUCK	TITLE AFC2200IB 1000 PSI HIGH PRESSURE INTERNAL BACKWASHING FILTER UNIT			
SALES/MKTG APPROVAL .	SCALE NONE				
ENGINEERING SPECIFICATION	DATE 01/02/03	SIZE A	DWG FILENAME AFC-2200-IB-GA002	REV A	