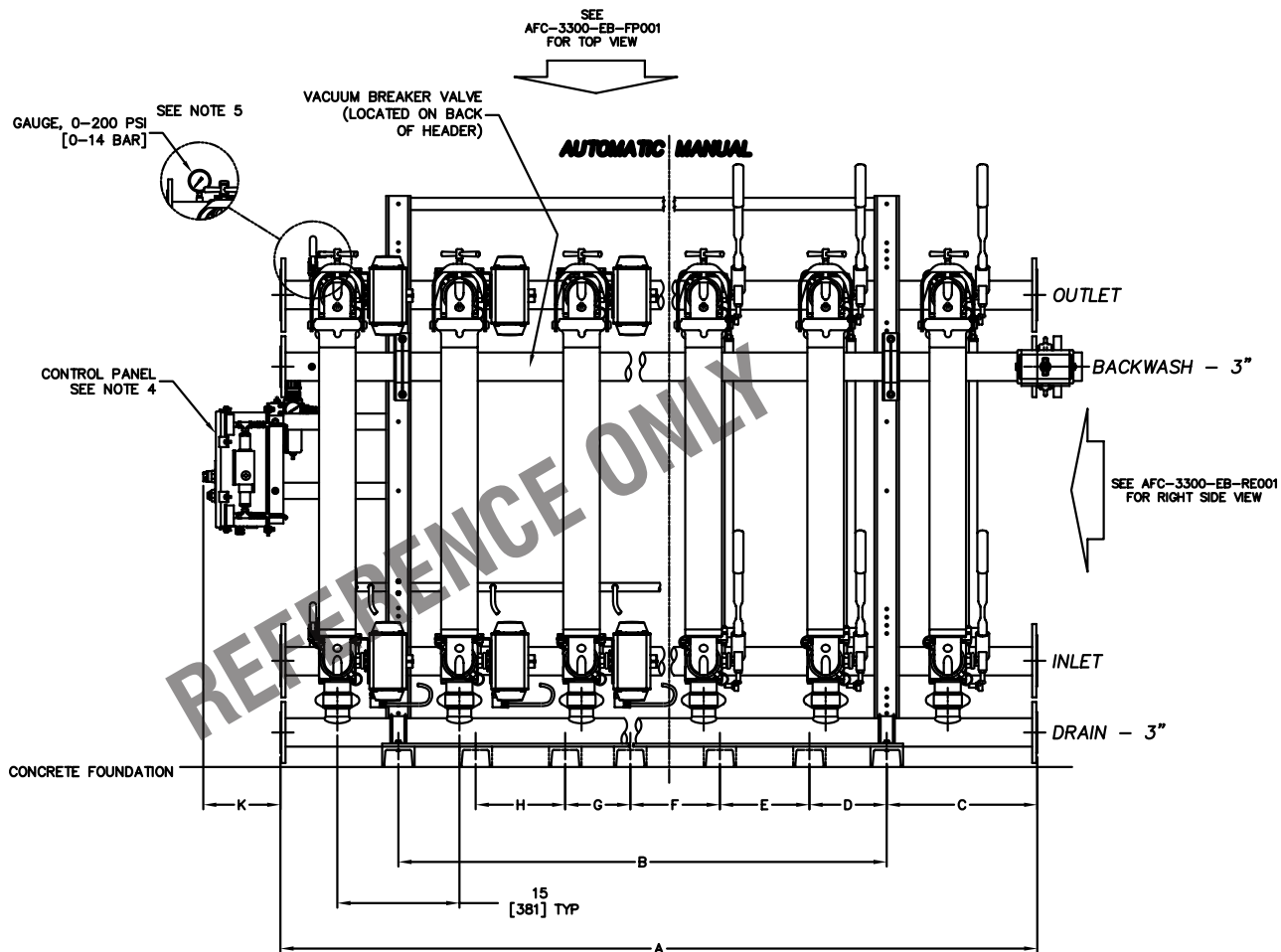


THIRD ANGLE PROJECTION

FOR DIMENSION TABLES SEE AFC3300EB-4



- NOTES:
1. ALL FLANGED PROCESS CONNECTIONS ARE LAP JOINT TYPE WITH ZINC PLATED CARBON STEEL BACKUP RINGS.
  2. PROCESS FLANGE CONNECTIONS ARE DRILLED TO ANSI, CLASS 150 OR DIN ND16.
  3. HEADERS MAY BE PIPED AT EITHER END; BLIND FLANGES (PURCHASER SUPPLIED) REQUIRED FOR OPPOSITE END.
  4. CONTROL PANEL IS EXCLUSIVE TO AUTOMATED UNITS.
  5. 1/4" VALVES (ON INLET/OUTLET HEADERS) ARE EXCLUSIVE TO AUTOMATED UNITS. MANUAL UNITS ARE EQUIPPED WITH GAUGES (1/4" NPT) AT THESE POSITIONS.
  6. HANDLE EXTENSIONS ARE PROVIDED AT EACH STATION ON MANUAL UNITS.
  7. ALL METALLIC WETTED PARTS ARE 316 STAINLESS STEEL.
  8. AUTOMATION AIR REQUIREMENTS: 5 SCFM [142 LITERS/MIN] MAXIMUM DEMAND AT 60 PSI [4.1 BAR] MIN, 120 PSI [8.2 BAR] MAX.
  9. ALL DIMENSIONS ARE IN INCHES WITH METRIC EQUIVALENTS IN BRACKETS [ ].
  10. FILTER ELEMENTS ARE DESIGNED TO WITHSTAND 150 PSI [10.3 BAR] DIFFERENTIAL PRESSURE.
  11. OPERATING PRESSURE IS (SEE SHEET AFC3300EB-4). HYDROSTATIC TEST PRESSURE IS (SEE SHEET AFC3300EB-4).
  12. EXTERIOR FINISH:  
TOP COAT: 1 MIL MINIMUM.  
COLOR: SILVER.  
TEMPERATURE RANGE: 250°F (121°C) CONTINUOUS.
  13. BACKWASH DELIVERY SYSTEM MUST PROVIDE 50 PSI [3.4 BAR] WHILE FLOWING 125 GAL/MIN [473 LITERS/MIN]. TEMPERATURE > PROCESS FLUID.

REFERENCE ONLY



EATON FILTRATION, LLC  
RONNINGEN-PETTER PRODUCTS  
9151 SHAVER ROAD  
PORTAGE, MICHIGAN 49024-6798 USA

THIS DRAWING AND ALL INFORMATION THEREON IS THE PROPERTY OF EATON CORPORATION. IT IS CONFIDENTIAL AND MUST NOT BE MADE PUBLIC. THIS DRAWING IS LOANED SUBJECT TO RETURN ON DEMAND, AND IS NOT TO BE USED DIRECTLY OR INDIRECTLY, IN ANY WAY DETRIMENTAL TO THE INTERESTS OF EATON FILTRATION, LLC.

ENGINEERING APPROVAL	DRAWN BY R. BUFFA	TITLE AFC3300IB AFC SERIES EXTERNAL BACKWASHING INLINE MULTIPLEX FILTER UNIT			
SALES/MKTG APPROVAL	SCALE NONE	DATE 05/06/05	SIZE A	DWG FILENAME AFC-3300-EB-GA001	REV A
	ENGINEERING SPECIFICATION				