

E51 Thru-Beam Photoelectric Sensor

INTRODUCTION

The E51 Thru-Beam Photoelectric Sensor consists of two separate components; a source which produces a modulated infrared light beam, and a detector which detects the emitted infrared light beam. The detector is "tuned" to receive modulated infrared light and to resist the effects of ambient light.

The detector head (Catalog, Number E51DC1) mounts on any E51 solid state switch body. It is a modular component of a sensor and is not an operative device by itself. The complete detector is comprised of three components: the sensor head, a solid state plug-in switch body and a wiring receptacle. The switch body and wiring receptacles are shared with other E51 sensors for other applications such as inductive proximity sensors. The components are readily assembled to form a complete, self-contained photoelectric detector. The detector head can be mounted in any one of our discrete positions, located ninety degrees apart.

Solid state plug-in switch bodies are available for use with the photoelectric detector head in several configurations with different optional features.

The following catalog numbers represent the photoelectric sources available, each designed to operate at a different voltage.

E51DEL	120 V AC- 50/60 Hz
E51DEL40.....	240 V AC- 50/60 Hz
E51DEL24.....	24 V AC- 50/60 Hz
E51DED	10-30 V AC

ALL AC SOURCES PLUG INTO OUR STANDARD CATALOG NO. E50RA WIRING RECEPTACLE.

The DC source plugs into our standard Catalog No. E51RN wiring receptacle.

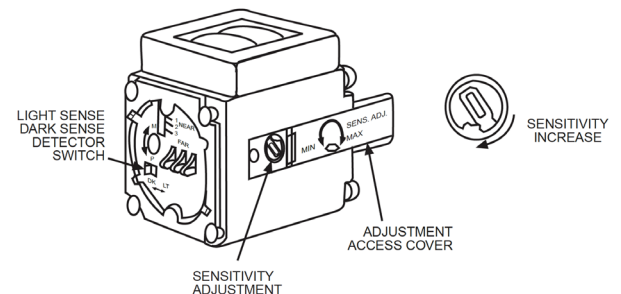
The source head can be mounted in any one of four discrete positions located ninety degrees apart.

DETECTOR SENSITIVITY ADJUSTMENT

The sensitivity adjustment is located on the detector head. For most applications the adjustment should be left on the high fully clockwise setting. For some applications, the amount of light energy available may be too high, and the sensitivity will need to be reduced for proper operation. This may occur when the detector and source are located substantially closer than the rated sensing distance and/or when the objects sensed are translucent to the infrared beam. Some materials usually thought to be opaque such as thin sections of paper, plastic, wood, etc., may be translucent to

the infrared beam for these applications, the sensitivity must be reduced.

To reduce sensitivity, first insert a small screwdriver into the slot at the base of the access cover and gently twist to open and slide the cover upwards, exposing the control pot. Next, insert the screwdriver into the adjustment pot and turn in a "counterclockwise" direction to reduce sensitivity. Set position of the pot for optimum performance.



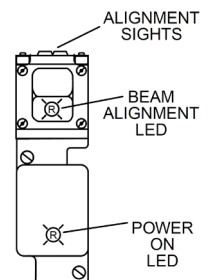
CAUTION

DO NOT APPLY POWER TO THE SWITCH WHILE THE HEAD IS NOT ATTACHED. DO NOT ATTACH THE HEAD WHILE POWER IS APPLIED TO THE SWITCH. LINE VOLTAGE WITH RESPECT TO GROUND IS PRESENT ON EXPOSED SWITCHBODY PRINTED CIRCUIT BOARD WITH HEAD REMOVED.

SENSING MODE

Dark Sensing - The sensor output will be energized when it detects an absence of light. The Thru-Beam sensor is a dark sensing device when used with the LT/DK switch in the DK position.

Light Sensing - The sensor output will be energized when it detects the presence of light. The Thru-Beam sensor is a light sensing device when used with the LT/DK switch in the LT position.



Each source contains a "Power On" LED which illuminates with power applied to the device. Also included in the lower half of the lens of each source is a visible Beam Alignment LED which illuminates when infrared light is being emitted from the upper half of the lens (See illustration.)

EAT•N

Powering Business Worldwide

SOURCE-DETECTOR ALIGNMENT PROCEDURES

Alignment of the emitted infrared beam can be accomplished by first using the sights on top of the source head to approximately locate the detector or vice versa. To further aid in alignment, the Beam Alignment LED is used as follows. When viewed from the detector head, the point at which the Beam Alignment LED in the source head appears brightest indicates approximate correct beam alignment. With the detector head aimed directly at the source, continue with the following alignment procedures.

1. Move the detector back and forth in the horizontal axis to find the extreme positions where the output indicator on the detector goes "off" (for dark operate models, or "on" for light operate models). Position the detector midway between the two extremes. Repeat this procedure for the vertical axis, then tighten the detector in place.
2. Now repeat the final alignment procedure for the source. Assistance may be required to observe the red LED on the detector. OR, a test lamp, observable from the source location, may be connected in the detector load circuit.
3. Steps 1 to 2 will give a coarse alignment. Refine the alignment by covering half of the detector lens to reduce Excess Gain. Then repeat the steps above with the detector lens half covered.

TARGET SENSING AREA

In order for the target to be detected, it must fully block the light beam that travels in a straight line from the source lens to the detector lens. This is known as the "effective beam" and is roughly the same size and shape as the lens (about 0.8 inch in diameter). The target being sensed must be at least the size of this effective beam to be detected.

MAINTENANCE

When the sensor is used under contaminating conditions periodic cleaning of lens in source and detector with a clean, dry cloth is recommended.

GLOSSARY

Ambient Light – Light in the area of a photoelectric sensor which does not originate with its light source.

Infrared (IF) – An invisible light beyond the range of the visible spectrum in the red region.

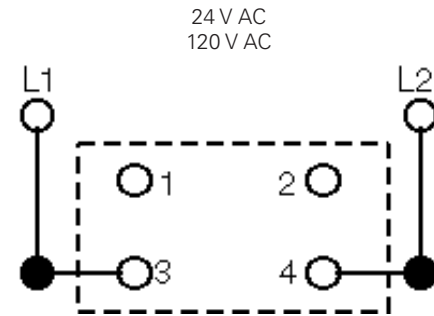
Modulated light – The infrared source is pulsed at a specific frequency so that the photodetector, tuned to the same pulse frequency, detects only the desired light source. This eliminates interference by ambient light.

Thru-Beam – The source and detector- switchbody combination are positioned opposite each other, so that light from the source shines directly at the detector. The object to be detected is passed between the two.

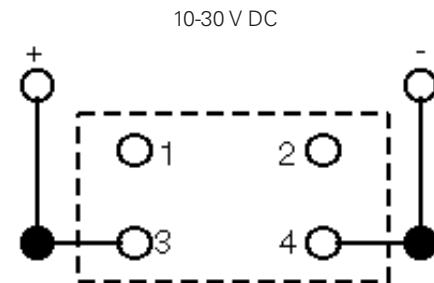
Time Delay Before Availability – The response time is the time between the application of power to the photoelectric sensor to function as intended.

Response Time – The time it takes for a device to respond to an input signal. The sum of the sensor, amplifier, and output response is the total response time.

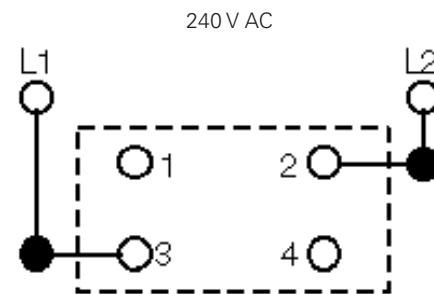
WIRING DIAGRAMS



E51DEL, E51DEL24
Source Wiring Diagram



E51DED
Source Wiring Diagram



E51DEL40
Source Wiring Diagram

EXCESS GAIN REQUIREMENTS ¹ Condition of environment where device is to be used.	Correction Factor	
	Location of Source or Detector	Location of both Source and Detector
Clean Air (ideal conditions, climate controlled or sterile areas)	1.0	1.0
Relatively Clean (office buildings)	1.25	1.6
Lightly Dirty (warehouses, post offices, clean processes)	1.6	3.2
Dirty (steel mills, saw mills, paper plants)	8.0	64
Very Dirty (steam tunnels, car washes, grinding/cutting tools with coolants.	25	625
Extremely Dirty (coal bins, grain elevators, fast buildup of thick layers)	100	10,000

¹ Figures are approximate and average — may be subjectively varied by as much as $\pm 50\%$.



CAUTION

DO NOT APPLY POWER TO THE SWITCH WHILE THE HEAD IS NOT ATTACHED. DO NOT ATTACH THE HEAD WHILE POWER IS APPLIED TO THE SWITCH. LINE VOLTAGE WITH RESPECT TO GROUND IS PRESENT ON EXPOSED SWITCHBODY PRINTED CIRCUIT BOARD WITH HEAD REMOVED.

EXCESS GAIN

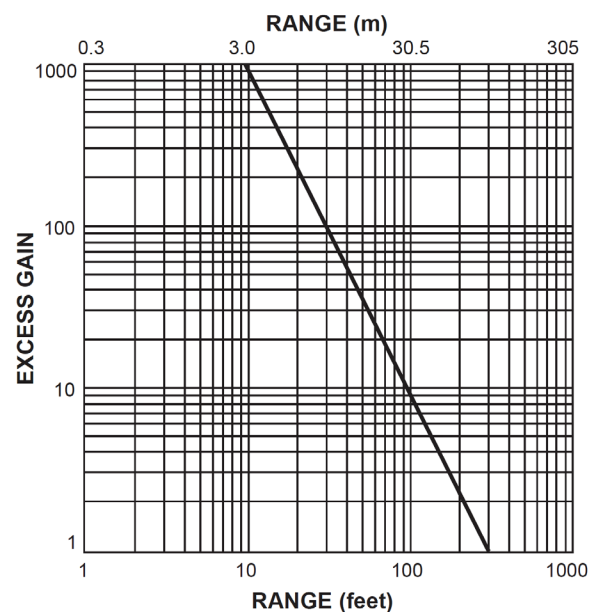
Excess Gain is a measure of the amount of light available to the detector as compared to the minimum amount necessary to operate the detector circuits. Expressed as a ratio, it indicates the amount of extra light available to overcome contamination. This extra light strength permits detection despite the attenuation of smoke, fog, dirt or dust. The curves show the relationship between Excess Gain and Scanning Distance - these curves are based on "clean air."

The Excess Gain chart expresses the gain required to overcome the effects of some commonly encountered environmental conditions. If the gain required is not available, the device can not be used under the conditions listed



CAUTION

WHEN SENSOR HEADS ARE ADDED OR CHANGED, THE HEAD MUST BE SECURELY TIGHTENED TO THE SWITCHBODY ASSEMBLY. TO ASSURE AND MAINTAIN A GOOD SEAL 16 INCH-POUNDS OF TORQUE ARE REQUIRED AT THE SENSOR HEAD SCREWS. (APPLY 12 INCH-POUNDS FOR E51SCN SWITCHES ONLY).



SPECIFICATIONS

Source			
Operational Voltage	E51DEL24		24 V AC- 50/60 Hz
	E51DEL		120 V AC- 50/60 Hz
	E51DEL40		249 V AC- 50/60 Hz
	E51DED		10-30 V DC
Field of View			36 inch diameter at 20 feet
Burden Current	DEL, DEL40, DED		30 mA
	DEL24		50 mA
Detector			
Electrical Specifications			See instruction publication for specific switch body used.
Operation Mode			Light or dark detect- selectable
Sensitivity Control Range			Min 10-1; Typ 15-1
Response Time	AC Switch body		10 mS
	DC Switch body		5 mS
Maximum Operating Frequency	AC Switch body		50 Hz
	DC Switch body		100 Hz
E51 Thru-Beam System			
Ambient Temperature Range			-25° to 70° C (13° to 158° F)
Enclosure Rating			NEMA 3,3S,4,4X, 6,6P,13
Vibration			30g over 10 Hz- 2 KHz, Sine
Shock			50g for 10 mS- 1/2 Sine pulse
Approvals			UL, CSA
Materials	Head		PAE/Polysulfone
	Body	E51SCN	PAE
		All Others	Die cast metal

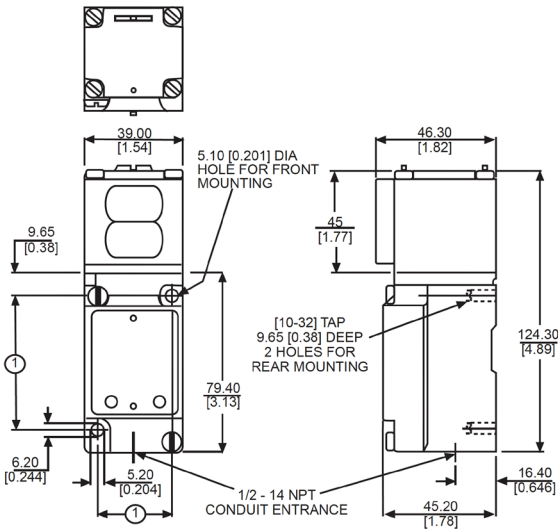
OPTICAL SPECIFICATIONS

Type	Thru-beam
Range	300 feet
Field of View	18" diameter at 20 feet
Effective Beam	0.8" diameter
Sunlight Immunity	10,000 foot candles
Source Light	Infrared, 880 nm



CAUTION

THIS INSTALLATION AND USE OF EATON PRODUCTS SHOULD BE IN ACCORDANCE WITH THE PROVISIONS OF THE U.S.. NATIONAL ELECTRICAL CODE AND/OR OTHER LOCAL CODES OR INDUSTRY STANDARDS THAT ARE PERTINENT TO THE PARTICULAR END USE. INSTALLATION OR USE NOT IN ACCORDANCE WITH THESE CODES AND STANDARDS COULD BE HAZARDOUS TO PERSONNEL AND/OR EQUIPMENT



- ① FOR FRONT MOUNTING
CAN ACCOMMODATE BOTH US $\frac{29.4 \times 59.5}{[1.16 \times 2.34]}$
AND DIN $\frac{30 \times 60}{[1.18 \times 2.36]}$ MOUNTING DIMENSIONS.
- ① FOR REAR MOUNTING $\frac{29.36 \times 59.44}{[1.156 \times 2.342]}$

Eaton Corporation
Electrical Sector
1111 Superior Ave.
Cleveland, OH 44114
United States
877-ETN-CARE (877-386-2273)
Eaton.com

© 2011 Eaton Corporation
All Rights Reserved
Publication No. P17812 / 003
July 2011