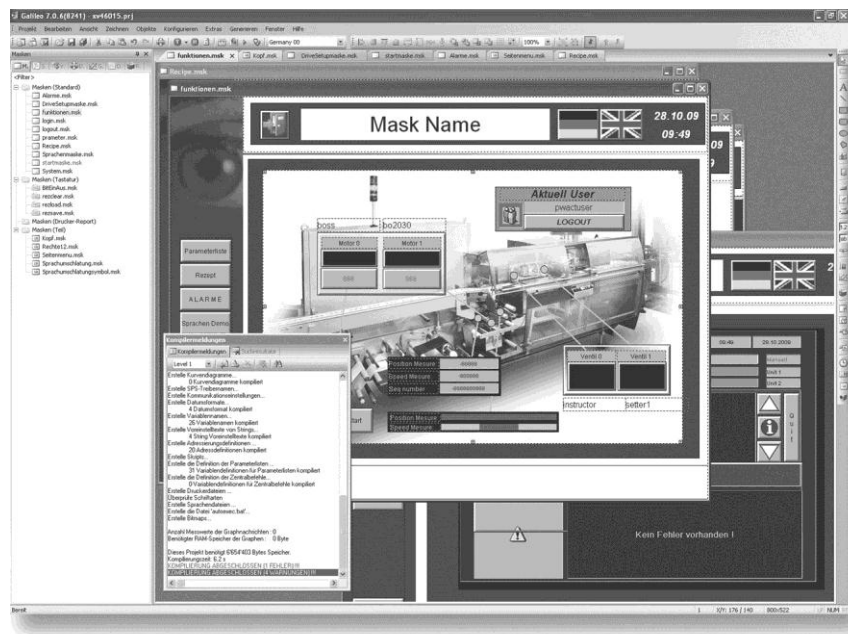


# GALILEO OPEN

## Runtime Software for Windows PC



## Imprint

### **Manufacturer**

Eaton Automation AG  
Spinnereistrasse 8-14  
CH-9008 St. Gallen  
Switzerland  
[www.eaton-automation.com](http://www.eaton-automation.com)  
[www.eaton.com](http://www.eaton.com)

### **Support**

#### **Region North America**

Eaton Corporation  
Electrical Sector  
1111 Superior Ave.  
Cleveland, OH 44114  
United States  
877-ETN-CARE (877-386-2273)  
[www.eaton.com](http://www.eaton.com)

#### **Other regions**

Please contact your supplier or send an E-Mail to:  
[automation@eaton.com](mailto:automation@eaton.com)

### **Original instructions**

The German version of this document is the original instructions

### **Editor**

Manfred Hüppi

### **Brand and product names**

All brand and product names are trademarks or registered trademarks of the owner concerned.

### **Copyright**

© Eaton Automation AG, CH-9008 St. Gallen

All rights reserved, also for the translation.

None of this document may be reproduced or processed, duplicated or distributed by electronic systems in any form (print, photocopy, microfilm or any other process) without the written permission of Eaton Automation AG, St. Gallen.

Subject to modifications.

**Imprint**

- 1      General ..... 5**
- 2      Project design with GALILEO ..... 7**
  - 2.1    Panel Type ..... 7
  - 2.2    Select PLC ..... 8
- 3      Testing the GALILEO project ..... 9**
- 4      GALILEO OPEN project structure ..... 11**
- 5      Licensing ..... 15**



## 1

**General**

GALILEO OPEN is a PC-based visualization software consisting of the GALILEO Runtime System (WinGRS).

WinGRS can be run on operating systems Windows under the following versions:

<b>Operating system</b>	<b>32 Bit</b>	<b>64 Bit</b>
Windows CE	-	-
Windows XP	✓	-
Windows Vista	✓	-
Windows 7	✓	✓

Tab. 1 Versions of the operating system

The project is designed with the GALILEO visualization tool.

This document describes the specific settings/additions that must be made for licensing PC operation and project design.

**This document is designed as a reference for commissioning and operation.**

Information on GALILEO is provided in the GALILEO Online Help.

# 1 General

## 2 Project design with GALILEO

### 2.1 Panel Type

Create a new project with GALILEO and call this for example «Test».

The «Panel Type» window will appear.

- Click on «Panel Selection» in the «Panel Type» window and select GALILEO OPEN.
- Confirm the selection with «OK».
- Define the number of colors in your project. You can choose between 256, 65,536 or 16,777,216 colors.

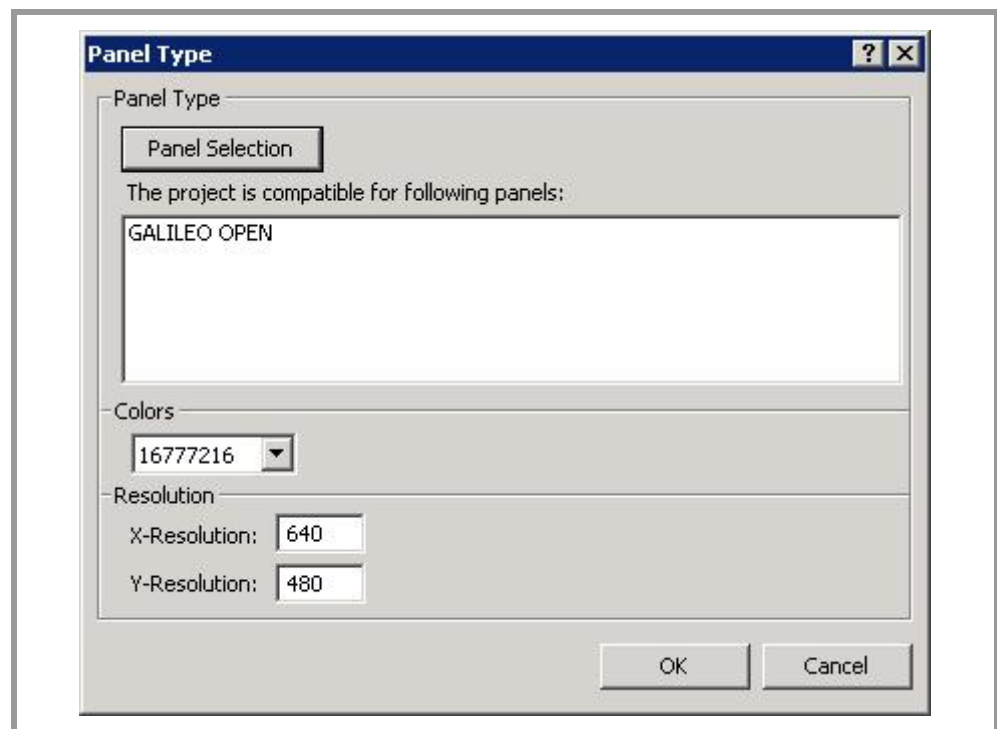


Fig. 1 Panel Type

GALILEO OPEN enables you to select any screen size as required. You can create projects that take up the entire screen or only part of it.

The following resolutions match the maximally possible solution:

X-Resolution: 10 – 1600 pixels  
 Y-Resolution: 10 – 1200 pixels

- Confirm your selection with «OK».

### 2.2

#### Select PLC

- The «**Select PLC**» window will appear.
- Click the «**Add**» button.

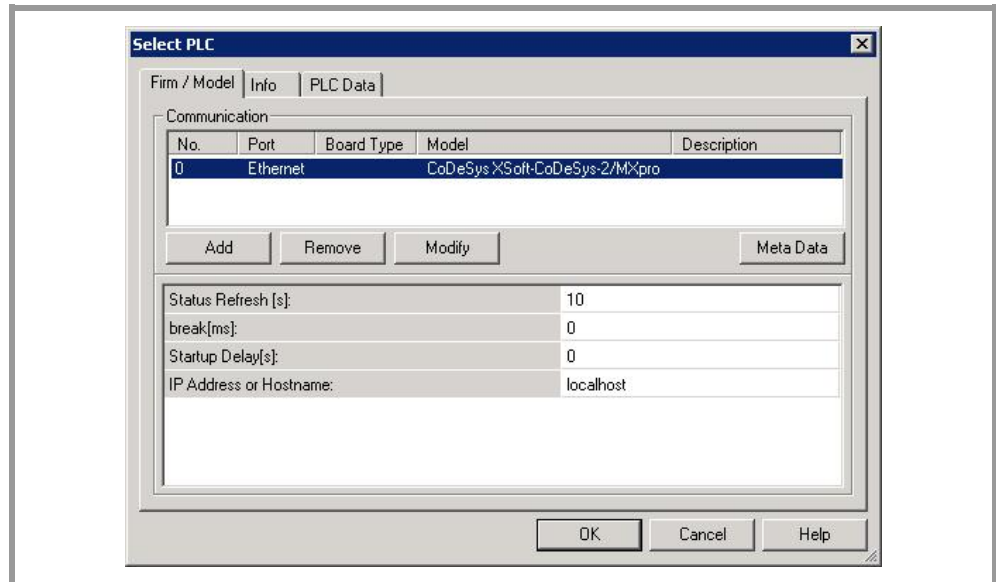


Fig. 2 Select PLC

- In the «**Communication Selection**» window use the «**Model:**» drop-down menu to choose the required communication.

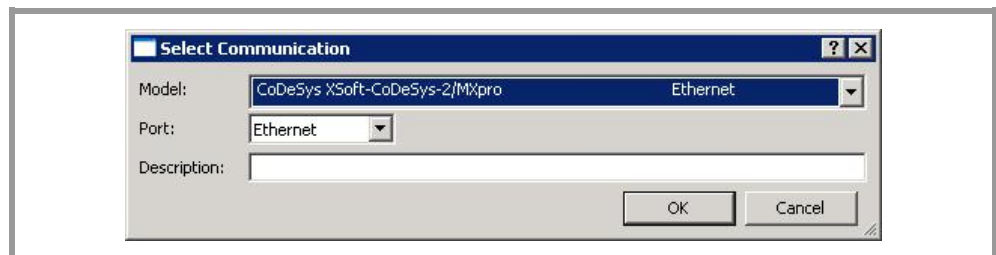


Fig. 3 Select Communication

- Confirm your selection with «**OK**».
- Confirm your selection in the «**Select PLC**» window with «**OK**».

Now create your project with GALILEO.



#### NOTE:

Information on «Loading drivers» and general topics concerning project design with GALILEO, Workshop and Runtime is provided in the Online Help.



## 3

**Testing the GALILEO project**

The integrated «**GALILEO Project Inspector**» (GPI) enables you to test your project directly from GALILEO.

The project must be compiled beforehand and can then be started by clicking the «**Start Inspector**» button.

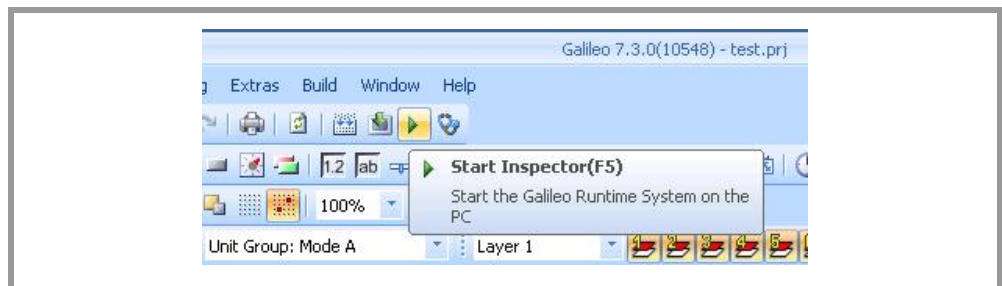


Fig. 4 Testing the project

### 3 Testing the GALILEO project

## 4

**GALILEO OPEN project structure**

After compilation, GALILEO creates a directory with all files that are required for starting the project on a Windows PC.

If, for example, a project «**TEST.PRJ**» is generated in the directory «**D:\DATA\GALILEO\**», the following directory structure is produced after compiling.

```
D:\DATA\GALILEO\TEST
    \test
        \runtime
```

The directory **\runtime** contains the file «**WinGRS.exe**» which must be started on the target system.

GALILEO enables you to transfer the project files via FTP, locally or to a network drive (download). Further information is provided in the GALILEO Online Help.

When transferring the files to the target system, you must copy the entire directory structure.

Example: **TEST**

```
\test
    \appl
    \custom
    \data
    \runtime
```

## 4 GALILEO OPEN project structure

Once the files are on the target system, you can a) Click «**WinGRS.exe**» in the appropriate folder, b) create a shortcut to it on the desktop or c) enter it in the Startup folder.

a) Clicking «**WinGRS.exe**» in the folder

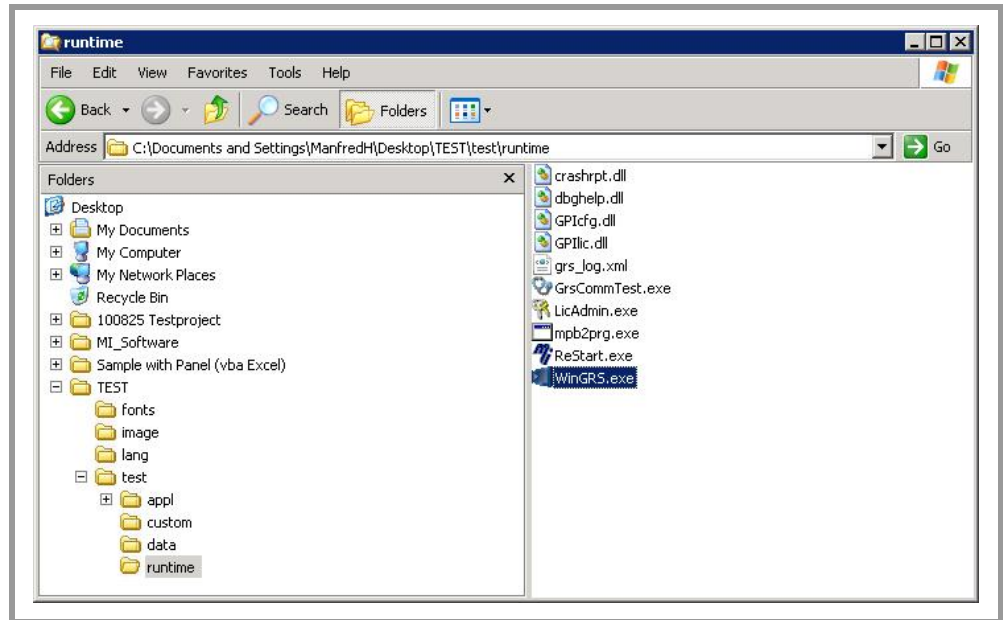


Fig. 5 Explorer – runtime

b) Creating a desktop shortcut for «WinGRS.exe»

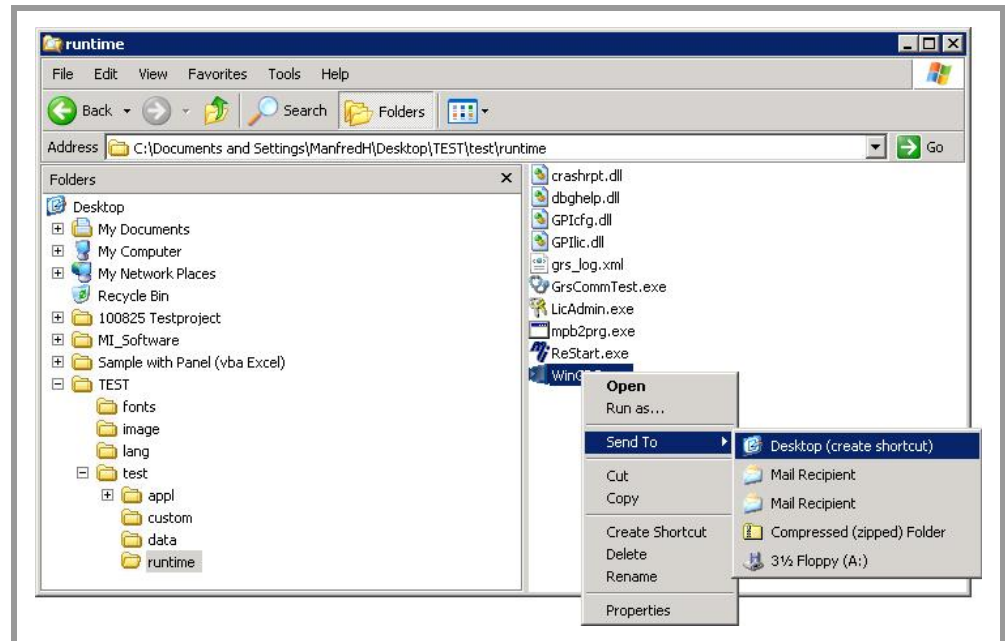


Fig. 6 Explorer – runtime – generate desktop shortcut

c) Entering «WinGRS.exe» in the Startup folder (see documentation for the relevant Windows operating system).

## 4 GALILEO OPEN project structure

## 5

## Licensing

Once you have stored the GALILEO OPEN directory structure on a PC, and started the «WinGRS.exe» runtime program, the «License Administrator 2.25.0» will appear.



Fig. 7 License Administrator

The «**Serial**» field shows a 12-digit code. This serial code is permanently linked to the PC on which you have just started the runtime program.

**NOTE:**

To enter the GALILEO OPEN license code, the PC / mobile PC must be in a state in which it will later be run with GALILEO OPEN. The license activation may be lost every time hardware (docking station, hard disk etc.) is added. GALILEO OPEN will then only run in DEMO mode.

In this case, please contact our Support:

[automation@eaton.com](mailto:automation@eaton.com)

Proceed as follows to obtain a license for operating GALILEO OPEN:

- Make a note of the 12-digit serial code (generated for each specific PC) displayed in the «License Administrator».
- Contact an Eaton Automation sales representative and request a GALILEO OPEN license with the designation «LIC-GALILEO-OPEN-PC». In order to run GALILEO OPEN on an Eaton XP device, you must order a license with the designation «LIC-GALILEO-OPEN-XP».
- The license product paper will be sent to you by post.

### Lizenzproduktschein

### License Product Paper

000

<b>Typ</b> Type	LIC-GALILEO-OPEN-PC	Eaton Automation GmbH Hein-Moeller-Straße 7-11 DE-53115Bonn
<b>Auftragsnummer</b> Order No.	1	
<b>Referenznummer</b> Reference No.	1	

Das Lizenzprodukt kann nur eingelöst werden, wenn dieser Lizenzproduktschein die notwendigen Informationen beinhaltet.  
The license product will be cashed only, if this License Product Paper does provide the necessary information.

**ID-Nummer (12 Stellen):**  
ID no. (12 characters): \_\_\_\_\_

**Ihre E-Mail oder Faxnummer:**  
Your e-mail or fax no.: \_\_\_\_\_


**Datum, Unterschrift:**  
Date, Signature: \_\_\_\_\_


Zur Einlösung der Lizenz senden Sie bitte ein Fax mit dem ausgefüllten Lizenzproduktschein an: Fax Nr. +41 (0)71 243 24 90

**Achtung:** Eine Übertragung der Lizenz auf ein Ersatzgerät ist nur gegen Vorlage dieses Lizenzproduktscheins möglich.

In Order to get the license code, please send a fax with the completed License Product Paper to: Fax No. +41 (0)71 243 24 90

Attention: A License transfer to a replacement device will be refused, if you cannot show this License Product Paper.





**EATON**  
Powering Business Worldwide

Eaton Automation AG  
Spinnereistrasse 8-14  
CH-9008 St. Gallen  
Switzerland

Tel. +41 (0)71 243 24 24  
Fax +41 (0)71 243 24 90  
www.microinnovation.com  
www.eaton.com  
automation@eaton.com

Fig. 8 License Product Paper



- Fill in the license product paper.
- Fax the license product paper to the printed fax number (Support).
- On receipt of the fax, the Support department will then generate a license number.
- Notify Support how the license number should be sent (by post, fax or email).
- Click «**Change License**».
- Enter the license number via the displayed keyboard.

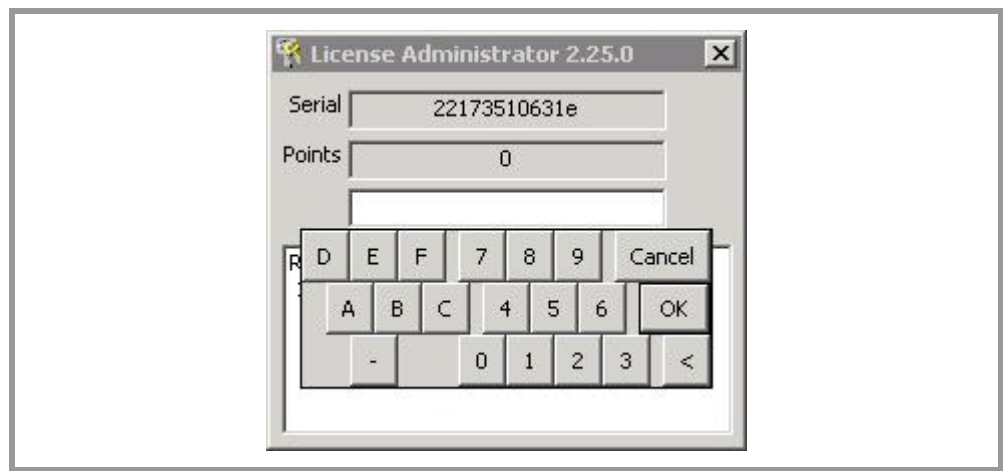


Fig. 9 License Administrator – Change License

- Confirm your entry with «**OK**».

GALILEO OPEN Runtime is now activated and can be used on the PC.