

# Energizing a world that demands more

Eaton's complete line of industrial control products

Variable frequency drives



Enclosed starters and VFDs



IEC motor control



NEMA motor control and protection



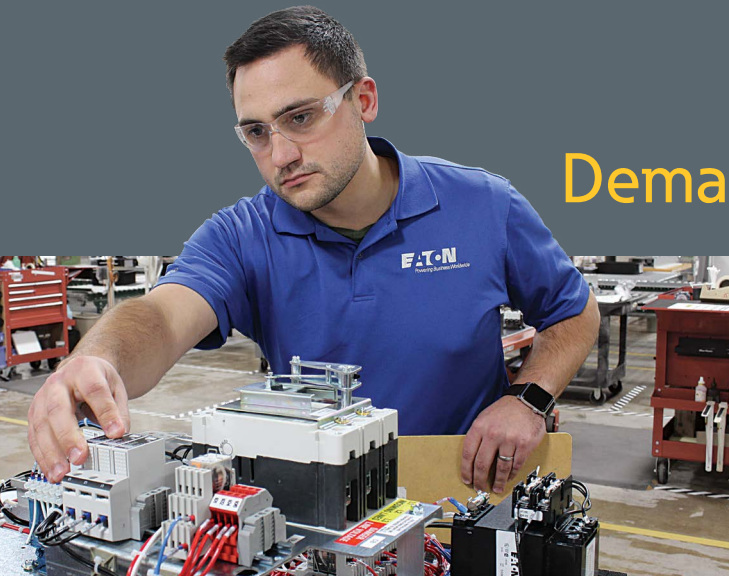
Operator interfaces and programmable logic controllers



Pilot devices and sensors



*Powering Business Worldwide*



# Demand more than good enough

Demand more than good enough means working with a variable frequency drives manufacturer that joins you in the trenches to get the job done right.

Demand Eaton variable frequency drives.

[Eaton.com/drives](http://Eaton.com/drives)

## Variable frequency drives (VFDs)



### Micro drives [Eaton.com/drives](http://Eaton.com/drives)

Compact space-saving drives with programmable features provide valuable energy savings for OEM applications.

- PowerXL™ DE1 variable speed starters
- PowerXL DM1 compact micro drives
- PowerXL DM1 Pro advanced machinery drives
- PowerXL DC1 micro drive with NEMA® 4X option
- PowerXL DA1 micro drives for closed-loop applications



### General purpose drives [Eaton.com/drives](http://Eaton.com/drives)

Engineered for today's demanding commercial and industrial applications, these robust drives provide reliable, efficient and precise motor control.

- PowerXL DG1 general purpose drives
- SVX general purpose drives



### HVAC drives [Eaton.com/drives](http://Eaton.com/drives)

Designed to significantly reduce energy consumption, these ultra-efficient drives increase cost savings for most HVAC applications.

- PowerXL DH1 HVAC drives

## Enclosed drives



### High-performance drives [Eaton.com/dx1](http://Eaton.com/dx1)

Ideal for applications that require precise speed, torque or closed-loop control. An innovative touchscreen features built-in metering and graphical trending.

- PowerXL DX1 high-performance drives
- SPX high-performance drives
- LCX liquid-cooled drives



### Standard enclosed drives [Eaton.com/drives](http://Eaton.com/drives)

Innovative drives offer pilot devices, circuit breaker/fused disconnects, input/output filtering and bypass capabilities.

- PowerXL DG1 enclosed drives
- PowerXL DH1 enclosed drives
- Explosion-proof drives
- NEMA 1, 12, 3R, 4/4X, 7 enclosures



### Advanced VFD solutions [Eaton.com/drives](http://Eaton.com/drives)

Engineered-to-order configurations with motor protection relays, custom bypass, custom enclosures and harmonics mitigation.

- Filtered and 18-pulse clean power drives
- Active front end drives
- Redundant drives

# NEMA motor control, motor protection and enclosed control



## NEMA power control [Eaton.com/Freedom](http://Eaton.com/Freedom)

Freedom NEMA-rated contactors and starters with solid-state and bi-metallic overload options; universal retrofit kits; UL® listed.

- CN15 contactors
- AN19 starters with solid-state overload
- AN16 starters with bi-metallic overload



## Specialty power control [Eaton.com/LightingContactors](http://Eaton.com/LightingContactors) [Eaton.com/DP](http://Eaton.com/DP)

Designed to deliver application versatility, simple configuration and high-performance operation.

- C25 definite purpose contactors (A2L certified LZGH2/H8) and starters
- CN35/C30CN/A202 lighting contactors
- Vacuum contactors and starters
- B230/B330/MS series manual motor starters



## Soft starters [Eaton.com/softstarters](http://Eaton.com/softstarters)

Control acceleration and deceleration of three-phase motors with current ranges from 0.8 A to 1000 A. Compact, multifunctional, easy to install and program.

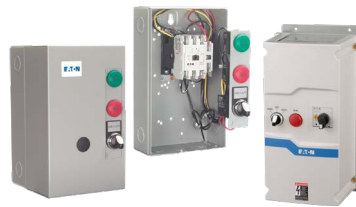
- S801+, S811+ heavy-duty soft starters
- S711 general duty soft starters
- S611 general duty soft starters
- DS7 soft start controllers



## Motor protection [Eaton.com/C445](http://Eaton.com/C445) [Eaton.com/C440](http://Eaton.com/C440)

Providing the highest level of motor protection and versatility while maximizing uptime.

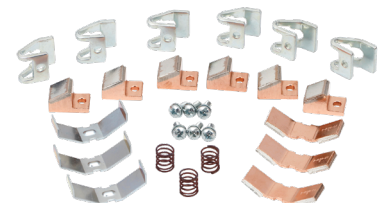
- Power Xpert® C445 motor management relays with zero sequence GF and user logic
- C440/XTOE electronic overload relays



## Enclosed control [Eaton.com/contactors](http://Eaton.com/contactors)

Expansive, flexible offering with a variety of modifications to meet your enclosed control needs.

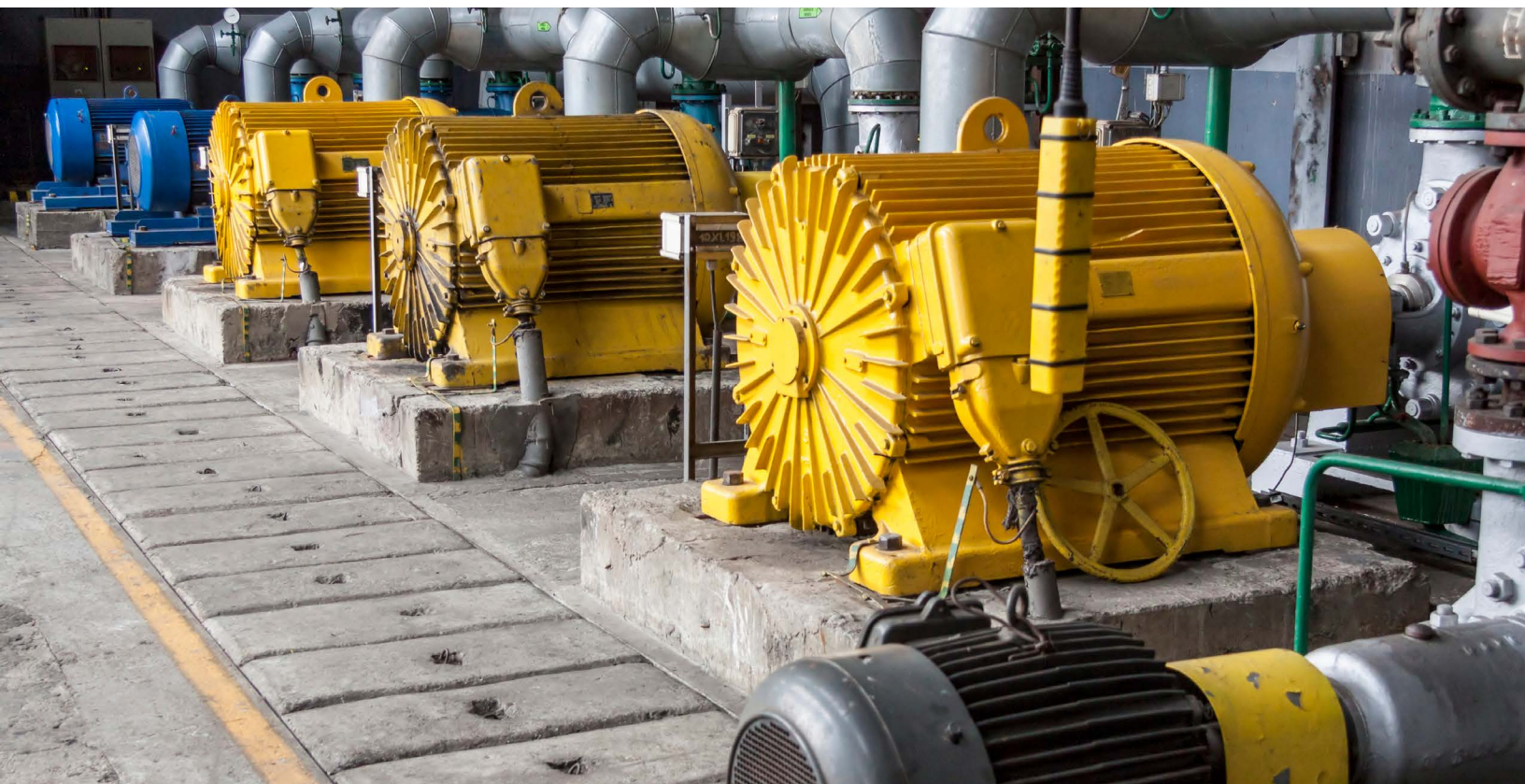
- XT compact combination starters
- NEMA and IEC contactors and starters
- Lighting contactors
- Reduced-voltage soft starters
- Pump panels and HVAC starters
- Custom OEM control panels



## Aftermarket and renewal parts

Extend the life of existing products with quality replacement parts.

- Replacement contact kits and coils
- Legacy contactor and starter support
- Replacement mill control products



## IEC motor control



### XT contactors and starters [Eaton.com/xt](http://Eaton.com/xt)

Compact, space-saving and easy-to-install XT line of IEC contactors and starters is the efficient and effective solution for customer applications from 7 A to 2450 A.

- Non-reversing and reversing contactors and starters
- Bi-metallic and electronic overload relays
- Safety contactors



### XT manual motor protectors and combination motor controllers [Eaton.com/xt](http://Eaton.com/xt)

XT IEC open non-reversing and reversing manual motor controllers combine a manual motor protector with an IEC contactor(s) to provide a complete motor protection solution.

- Bi-metallic manual motor protectors
- Electronic manual motor protectors
- Type E combination motor controllers
- Type F combination motor controllers



### Electronic motor starters (EMS) [Eaton.com/IECEMS](http://Eaton.com/IECEMS)

Full starter with built-in solid-state contacts and integral overload protection. Compact size and high electrical life make it an ideal replacement for traditional contactor/overload relay starter configuration.

- Non-reversing starters
- Reversing starters
- Non-reversing and reversing with e-stop

## Automation and safety



### Programmable logic controllers [Eaton.com/PLC](http://Eaton.com/PLC)

Ideal for lighting, energy management, industrial control, irrigation, pump control and HVAC.

- easyE4 nano PLCs with AWS cloud connectivity
  - Base device with or without display, 12 I/O
  - Expansion modules with digital/analog and PT100/1000
- XC104, XC204 micro PLCs
- XC300 small



### Operator interface [Eaton.com/HMI](http://Eaton.com/HMI)

Features familiar, easy-to-understand control interfaces and command methods that are used in consumer electronics.

- XV100 basic with Linux
- XV300 advanced with Linux
- XP500 panel PCs
- XH300 web panels



### Safety products [Eaton.com/safety-relays](http://Eaton.com/safety-relays)

Created to enhance machine operator safety and machine motor control.

- Programmable and discrete safety relays (ESR5)
- Safety contactors (XT) and safety pushbuttons
- LS-Titan, RS-Titan interlock and limit switches

## Sensors



### Photoelectric sensors [Eaton.com/sensors](http://Eaton.com/sensors)

Products feature powerful optics and long detection ranges and are built in robust enclosures for any industrial sensing application.

- Tubular and rectangular enclosures
- Optical variants including background rejection
- AC/DC and DC including 2-wire versions



### Proximity sensors [Eaton.com/sensors](http://Eaton.com/sensors)

Long detection ranges, high noise immunity, and shock and vibration resistance characterize Eaton's cost-effective proximity sensor line.

- Tubular and rectangular enclosures
- Extended detection ranges up to 100 mm
- AC/DC and DC including 2-wire versions



### Limit switches [Eaton.com/sensors](http://Eaton.com/sensors)

A full range of NEMA and IEC mechanical limit switches designed and built to survive in the most difficult application conditions.

- NEMA styles including fully sealed switches
- IEC range includes metal and plastic options
- Interlock switches with safety ratings

## Pilot devices and panel components



### Pilot devices [Eaton.com/pushbuttons](http://Eaton.com/pushbuttons)

Available in many shapes and sizes, these versatile pilot devices are ideal for applications in the North American (NEMA) and global (IEC) markets.

- 20 mm and 30 mm pushbuttons
- Indicating lights and emergency stops
- Selector and palm switches
- Joysticks and potentiometers



### Control stations [Eaton.com/pushbuttons](http://Eaton.com/pushbuttons)

General purpose and heavy-duty options with fixed element or modular design to suit virtually any industrial or commercial application.

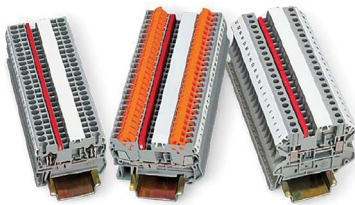
- 22.5 mm devices
- 30.5 mm devices



### Signal towers [Eaton.com/SL](http://Eaton.com/SL)

Provide highly versatile, completely modular signaling for key processes—and with IP66 protection, these signal towers thrive indoors and out.

- SL7—70 mm
- SL4—40 mm
- SLC—compact stack lights



### Terminal blocks [Eaton.com/xb](http://Eaton.com/xb)

Built for years of use under demanding conditions, these terminal blocks are available in three simple and reliable terminal connection styles with universal accessories.

- Screw terminals
- Spring cage terminals
- Insulation displacement connection (IDC)



### Control power [Eaton.com/powersupplies](http://Eaton.com/powersupplies)

Wide selection of durable and reliable DIN rail power supplies, available in 12 and 24 Vdc, for general, compact and low-profile applications.

- PSG general purpose power supplies
- PSC compact power supplies
- PSL low-profile power supplies



### Industrial relays [Eaton.com/relays](http://Eaton.com/relays)

Extensive relay line that can be customized to meet many application requirements.

- General purpose relays
- Solid-state relays
- Control, timing and monitoring relays
- Machine tool and terminal block relays

## Additional circuit protection solutions from Eaton



### Power Defense™ circuit breakers [Eaton.com/powerdefense](http://Eaton.com/powerdefense)

Eaton's globally rated Power Defense circuit breakers increase personnel safety and provide a foundation for IoT, with embedded communications and metering functionality, helping to optimize your facility's performance.

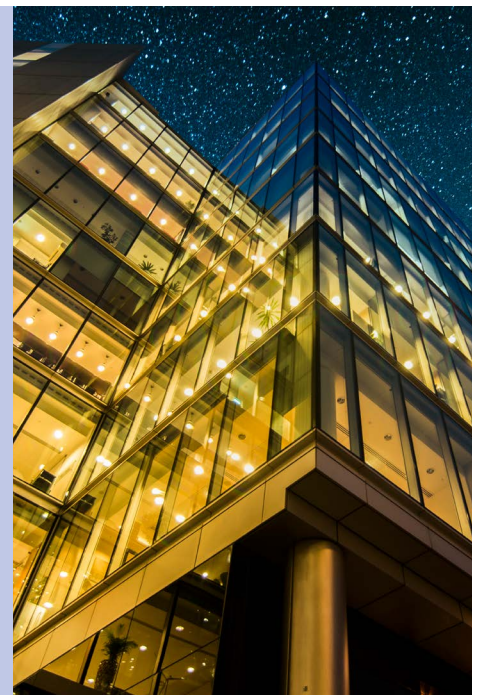
**For more information or for technical assistance, contact EatonCare at 877-ETN-CARE.**



### Bussmann® series fuses, blocks, holders and disconnect switches [Eaton.com/bussmannseries](http://Eaton.com/bussmannseries)

Eaton develops and manufactures Bussmann series fusible circuit protection, power management and electrical safety products for industrial, commercial and alternative energy markets.

**For more Bussmann series product information, or for technical assistance, call 855-287-7626.**



# 877-ETN-CARE

Distribution and control solutions

877-386-2273

**Component order and component returns**  
(Order Center, EDI, Fax)



Press  
**1**

**Project order support**  
(Bid Manager)



Press  
**3**

**Additional EatonCare support centers**



Press  
**5**

**Technical Resource Center**



Press  
**2**

**EatonCare Critical Power and Digital Infrastructure (CPDI) including UPSs**



Press  
**4**

Press  
**1**

**Industrial control products**

Press  
**4**

**Power distribution products**

Press  
**7**

**Low-voltage variable frequency drives**

Press  
**2**

**Circuit protection products**

Press  
**5**

**Power management products**

Press  
**8**

**Medium-voltage control and drives**

Press  
**3**

**Residential products**

Press  
**6**

**Automation products**

Press  
**9**

**Brightlayer technical support**

See document SA02800001E.

**Eaton**  
1000 Eaton Boulevard  
Cleveland, OH 44122  
United States  
Eaton.com

**Industrial Control Headquarters**  
W126 N7250 Flint Drive  
Menomonee Falls, WI 53051  
United States

©2025 Eaton  
All Rights Reserved  
Printed in USA  
Publication No. SA083077EN / Z29789  
January 2025

For more information, visit  
**Eaton.com/industrialcontrol**



Powering Business Worldwide

Eaton is a registered trademark.

All other trademarks are property of their respective owners.

Follow us on social media to get the latest product and support information.

