

Enclosed Manual Motor Starter with Hand-Auto

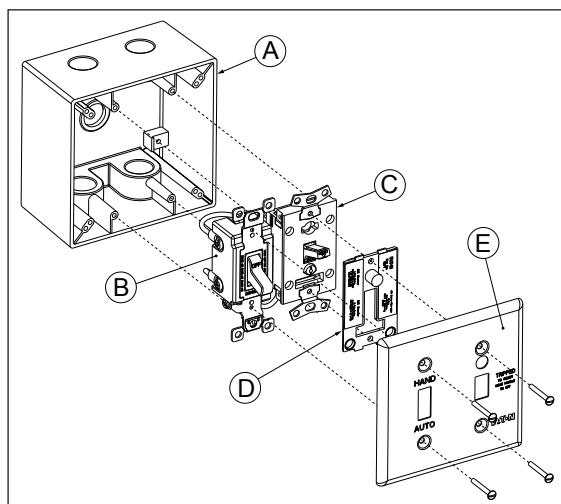


Figure 1. Exploded View

This packaged solution, in conjunction with the appropriate sized heater pack, will provide all the necessary components to provide local and remote control, overload protection, and running light indications for small motor applications.

1. Remove the cover plate (E) from the enclosure.
2. Remove the motor starter (C) with the pilot light (D), the hand / auto switch (B), the wiring diagram, heater pack diagram, and the packaged mounting lugs & closure plugs from the enclosure (A).
3. If the hole located at the back of the enclosure will not be used, twist the closure plug into location.
4. Mount the enclosure into location utilizing the mounting lugs or by using the integral mounting knockouts as shown in Figure 2.
5. Remove the pilot light from the motor starter as shown in Figure 3.
6. Install the MSH heater pack into location within the starter (C) as shown in Figure 4. (Available heater packs are shown in Table 1.)
7. Access the terminals of the starter (C) as shown in Figure 5.

Mounting Options :

- (L) Mounting Lugs
- (K) Mounting Knockouts

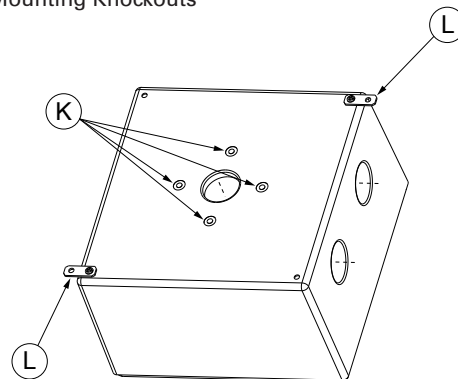


Figure 2. Mounting Options

8. Wire the line and load side terminals of the starter (C) per the wiring diagram shown in Figure 6.
9. Wire the available line terminal of the switch (B) into your remote source.
10. Re-install the pilot light into location.
11. Re install the starter with pilot light and the hand / auto switch back into the enclosure with wire leads hanging out of the appropriate conduit outlets.
12. Secure the cover plate back onto the enclosure.

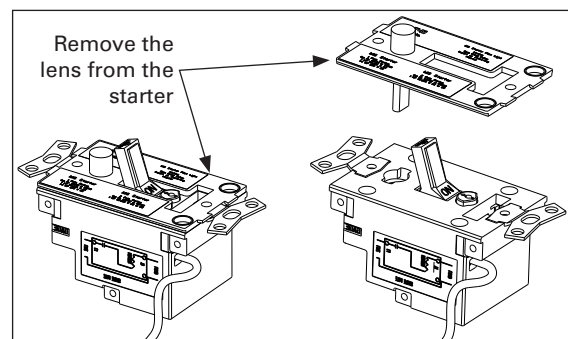


Figure 3. Pilot Light Removal

EAT•N

Powering Business Worldwide

TABLE 1. MST HEATER PACK TABLE
(Wire with 60°C / 70°C wire)

Code Marking	Full-Load Current of Motor (Amps) (40°C Ambient)	Max. Protect. Device (Amp)	Code Marking	Full-Load Current of Motor (Amps) (40°C Ambient)	Max. Protect. Device (Amp)	Code Marking	Full-Load Current of Motor (Amps) (40°C Ambient)	Max. Protect. Device (Amp)
MSH .5A	.40 - .43	1 Amp Fuse*	MSH 1.7A	1.36 - 1.51	5 Amp Fuse*	MSH 6.0A	4.80 - 5.26	20 Amperes
MSH .55A	.44 - .48	2 Amp Fuse*	MSH 1.9A	1.52 - 1.67	5 Amp Fuse*	MSH 6.6A	5.27 - 5.83	20 Amperes
MSH .61A	.49 - .53	2 Amp Fuse*	MSH 2.1A	1.68 - 1.83	6 Amp Fuse*	MSH 7.3A	5.84 - 6.39	20 Amperes
MSH .67A	.54 - .58	2 Amp Fuse*	MSH 2.3A	1.84 - 1.99	6 Amp Fuse*	MSH 8.0A	6.40 - 7.03	25 Amperes
MSH .74A	.59 - .64	2 Amp Fuse*	MSH 2.5A	2.00 - 2.23	6 Amp Fuse*	MSH 8.8A	7.04 - 7.74	25 Amperes
MSH .81A	.65 - .71	3 Amp Fuse*	MSH 2.8A	2.24 - 2.47	6 Amp Fuse*	MSH 9.7A	7.75 - 8.46	25 Amperes
MSH .89A	.72 - .78	3 Amp Fuse*	MSH 3.1A	2.48 - 2.71	10 Amp Fuse*	MSH 10.6A	8.47 - 9.35	30 Amperes
MSH .98A	.79 - .87	3 Amp Fuse*	MSH 3.4A	2.72 - 2.95	10 Amp Fuse*	MSH 11.7A	9.36 - 10.30	35 Amperes
MSH 1.1A	.88 - .95	3 Amp Fuse*	MSH 3.7A	2.96 - 3.27	15 Amperes	MSH 12.9A	10.31 - 11.35	40 Amperes
MSH 1.2A	.96 - 1.03	3 Amp Fuse*	MSH 4.1A	3.28 - 3.59	15 Amperes	MSH 14.2A	11.36 - 12.47	40 Amperes
MSH 1.3A	1.04 - 1.15	3 Amp Fuse*	MSH 4.5A	3.60 - 3.99	15 Amperes	MSH 15.6A	12.48 - 13.67	45 Amperes
MSH 1.45A	1.16 - 1.27	3 Amp Fuse*	MSH 5.0A	4.00 - 4.39	15 Amperes	MSH 17.1A	13.68 - 15.12	50 Amperes
MSH 1.6A	1.28 - 1.35	5 Amp Fuse*	MSH 5.5A	4.40 - 4.79	15 Amperes	MSH 18.6A	15.13 - 16.00	60 Amperes

*15 Ampere protective device is permitted by NEC. Fuse size shown in table limits fault current.

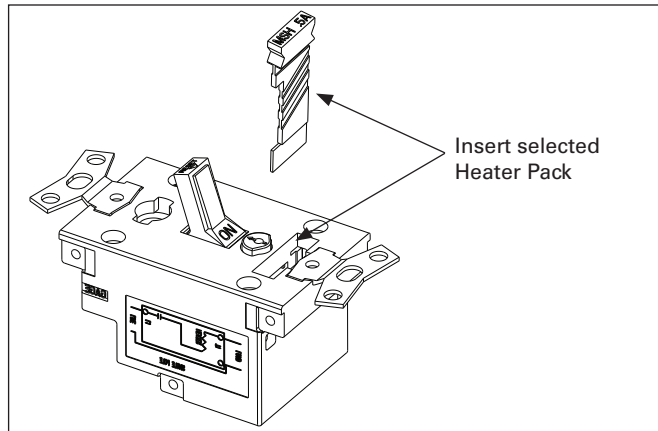


Figure 4. Installation of Heater Pack

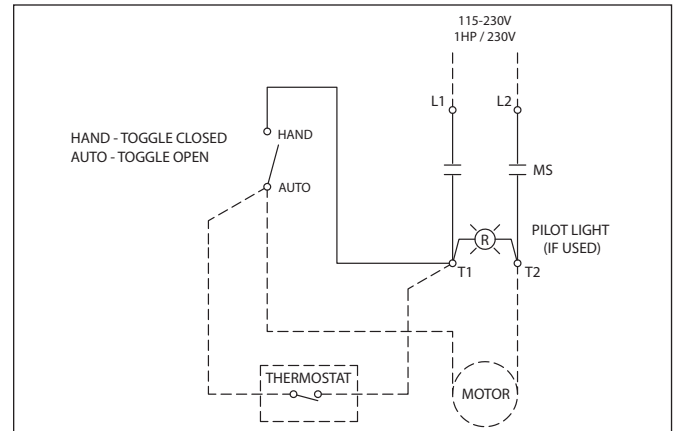


Figure 6. Wiring Diagram

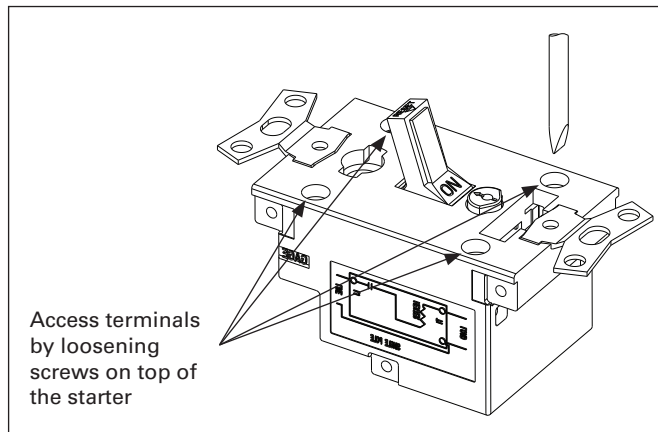


Figure 5. Terminal Access

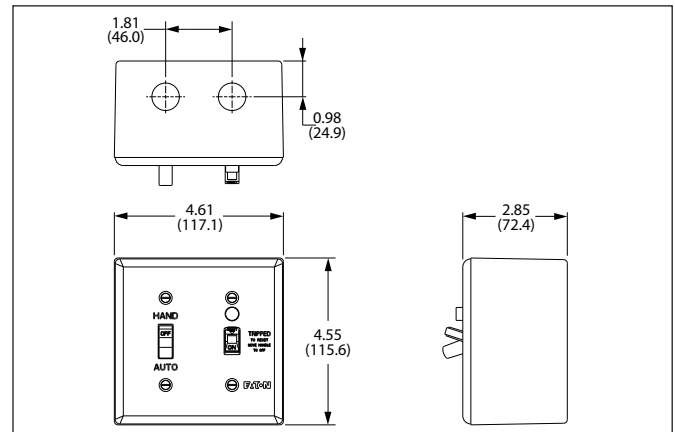


Figure 7. General Dimensions

Eaton
1000 Eaton Boulevard
Cleveland, OH 44122
United States
Eaton.com

© 2015 Eaton
All Rights Reserved
Publication No. P52977 / 001
July 2015