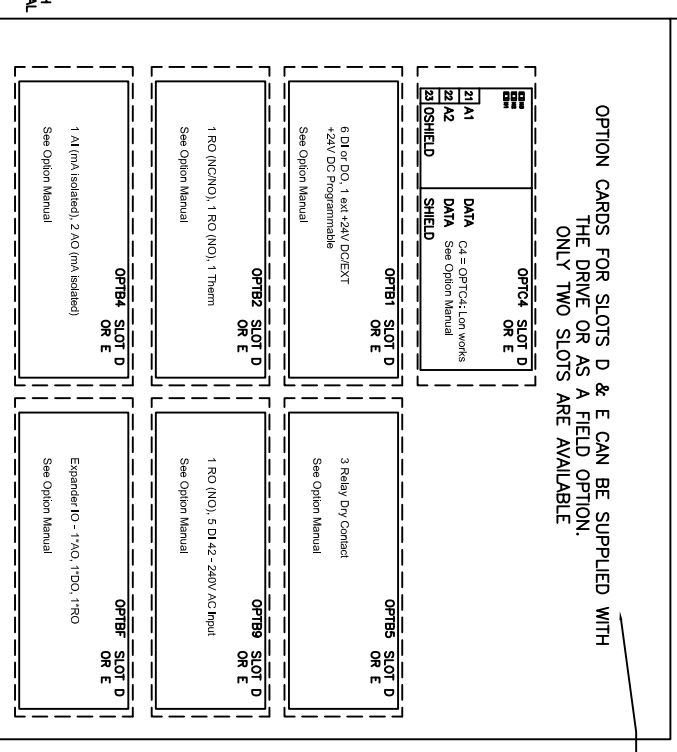


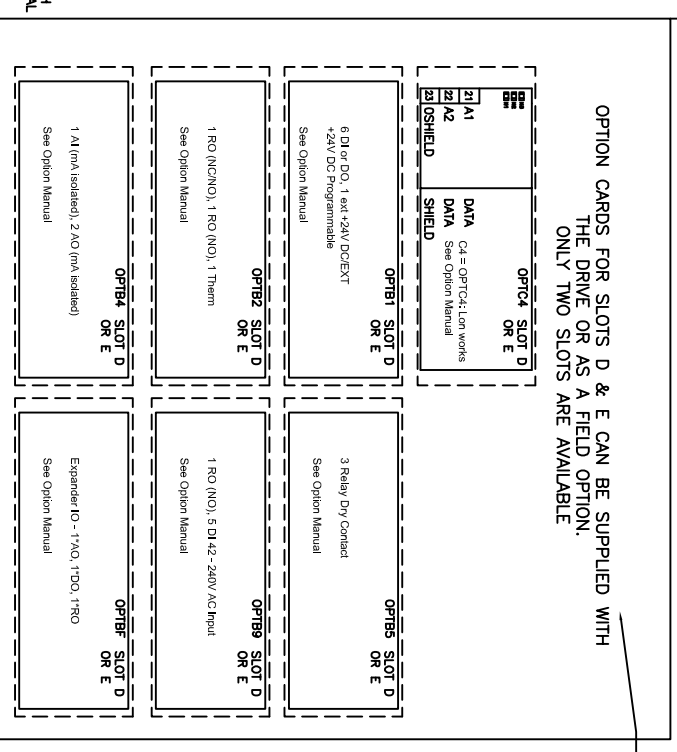
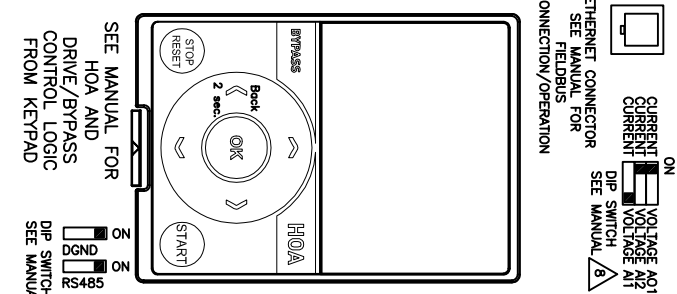
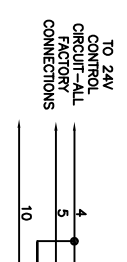
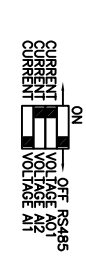
MAIN CONTROL PCB	
1	+10V REFERENCE OUTPUT
2	AI-1+ ANALOG INPUT VOLTAGE (RANGE 0-10 VDC)
3	VIH ANALOG INPUT COMMON
4	AI-2+ ANALOG INPUT CURRENT (RANGE 4-20mA)
5	AI-2- CONTROL VOLTAGE OUTPUT
6	24Vout I/O GROUND
7	DI1 START/STOP
8	DI2 EXTERNAL FAULT
9	DI1- RUN PERMISSIVE IP INTERLOCK
10	DI3 DI1-DING COMMON
11	DI4 CONTROL VOLTAGE OUTPUT
12	24Vout I/O GROUND
13	DI4 SPEED SELECT (PROGRAMMABLE 0-100%)
14	DI5 FIRE MODE
15	DI6 FORCE BYPASS
16	DI6 DI4-DING COMMON
17	DI7 DI4-DING COMMON
18	AO-1+ OUTPUT FREQUENCY
19	AO-1- ANALOG OUTPUT
20	24VIN 24VDC AUX INPUT VOLTAGE
21	DI1 RS485 DATA-
22	DI2 RS485 DATA+



- NOTES:
- ENCLOSURE AND MOTOR(S) MUST BE GROUNDED. SEE INSTRUCTION MANUAL.
 - JUMPER IS FACTORY INSTALLED TO ENABLE START PERMISSIVE. CAN BE REPLACED WITH N/C CONTACT.
 - CLOSE TERMINALS 6 TO 8 OR 8 TO 12 TO START IN AUTO MODE - SEE MANUAL.
 - RELAYS SHOWN IN DE-ENERGIZED STATE.
 - WHEN PSG120F IS SUPPLIED, L3 WILL BE WIRED TO 1L3.

DO NOT MAKE ANY CONNECTIONS TO DC+, R+, R-, TERMINALS, THESE TERMINALS ARE USED FOR OPTIONAL DYNAMIC BRAKING

ALTERNATE CONTROL PCB DIP SWITCH CONFIG SHOWN BELOW



NOTE A: INCOMING POWER CONNECTION:
 RUN CABLING IN SEPARATE METAL CONDUIT OR WIRE TRAY.
 DO NOT RUN WITH CONTROL WIRING OR MOTOR CABLES.
 CABLES TO BE SIZED PER NEC.
 PROVIDE LOW IMPEDANCE GROUND CONNECTION TO DRIVE CHASSIS.
 DO NOT CONNECT TO B+, B- TERMINALS. THESE TERMINALS ARE USED FOR EXTERNAL BRAKING IF REQUIRED.
 NOTE B: I/O CONNECTION:
 RUN 110VAC AND 24VDC CONTROL WIRING IN SEPARATE CONDUIT.
 COMMUNICATION WIRE TO BE SHIELDED.
 KEYPAD CABLE MUST BE LESS THEN 20 FEET.
 NOTE C: MOTOR CONNECTION:
 RUN MOTOR CABLES IN SEPARATE METAL CONDUIT OR WIRE TRAY.
 DO NOT RUN WITH CONTROL WIRING OR POWER CABLES.
 CABLES TO BE SIZED PER NEC.
 PROVIDE LOW IMPEDANCE GROUND CONNECTION BETWEEN MOTOR AND DRIVE.

OPTION CODE: PE L3 SA

<p>ADDED TABS 0009 THRU 0016 AND 1009 THRU 1016; ADDED HEATER TO SCHEMATIC ON TABS 0009 THRU 0016 AND 1009 THRU 1016;</p>		<p>DR DATE 01/21/13</p>		<p>TITLE HMAX FRAME SIZES 4-7 INTELLIDISCONNECT</p>	
<p>THIRD ANGLE PROJECTION</p>		<p>FILE TYPE AutoCAD</p>		<p>ECO NUMBER ECO-041338</p>	
<p>DWG. SIZE B</p>		<p>DWG FILENAME 285446.DWG</p>		<p>REVISION 004</p>	
<p>ON OFF RS485 CURRENT VOLTAGE AI1 CURRENT VOLTAGE AI2</p>		<p>DATE 01/21/13</p>		<p>G.O. NUMBER 285446-0014</p>	
<p>ON OFF RS485 CURRENT VOLTAGE AI1</p>		<p>DATE 01/21/13</p>		<p>DWG TYPE SCHEMATIC</p>	
<p>ON OFF RS485 CURRENT VOLTAGE AI1</p>		<p>DATE 01/21/13</p>		<p>DWG NO. 285446-0014</p>	
<p>ON OFF RS485 CURRENT VOLTAGE AI1</p>		<p>DATE 01/21/13</p>		<p>SHEET 1 OF 1</p>	