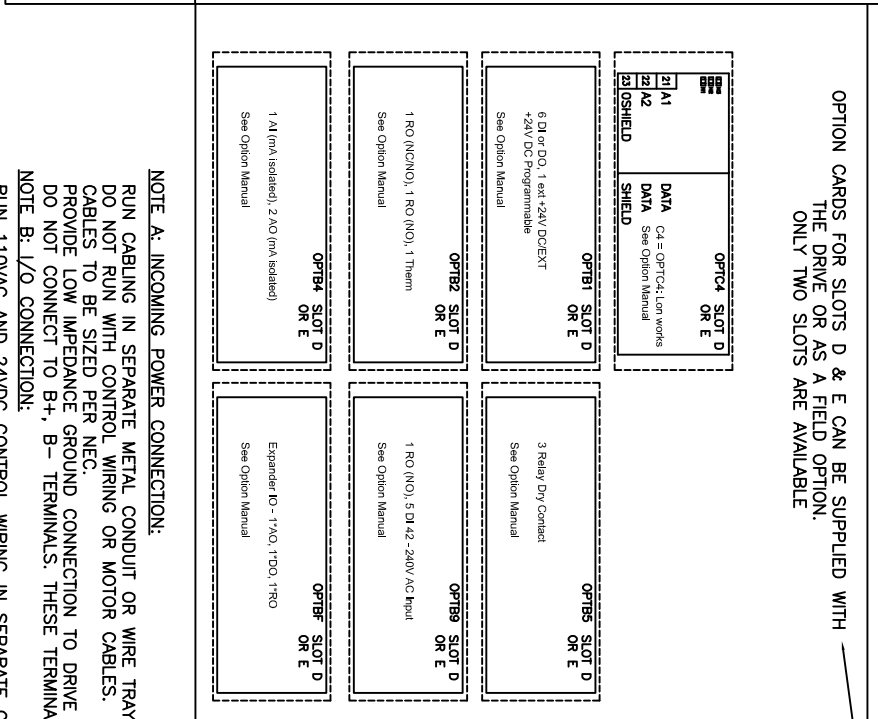
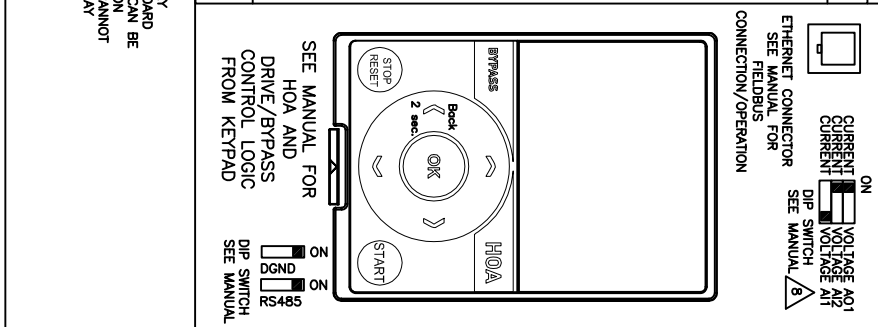


Terminal	Function
1	+10V REFERENCE OUTPUT
2	AI-1+ ANALOG INPUT VOLTAGE (RANGE 0-10 VDC)
3	VIn ANALOG INPUT COMMON
4	AI-2+ ANALOG INPUT CURRENT (RANGE 4-20mA)
5	AI-2- ANALOG INPUT CURRENT (RANGE 4-20mA)
6	24Vout CONTROL VOLTAGE OUTPUT
7	GND I/O GROUND
8	DN1 START/STOP
9	DN2 EXTERNAL FAULT
10	DN3 RUN PERMISSIVE IP INTERLOCK
11	CMA DN1-DN6 COMMON
12	24Vout I/O GROUND
13	DN4 SPEED SELECT (PROGRAMMABLE 0-100%)
14	DN5 FIRE MODE
15	DN6 FORCE BYPASS
16	CMB DN4-DN6 COMMON
17	AO-1+ OUTPUT FREQUENCY
18	AO-1- ANALOG OUTPUT
19	24VDC AUX INPUT VOLTAGE
20	RS485 DATA-
A	RS485 DATA+
B	DATA+ RS485 DATA+



OPTION CARDS FOR SLOTS D & E CAN BE SUPPLIED WITH THE DRIVE OR AS A FIELD OPTION. ONLY TWO SLOTS ARE AVAILABLE.

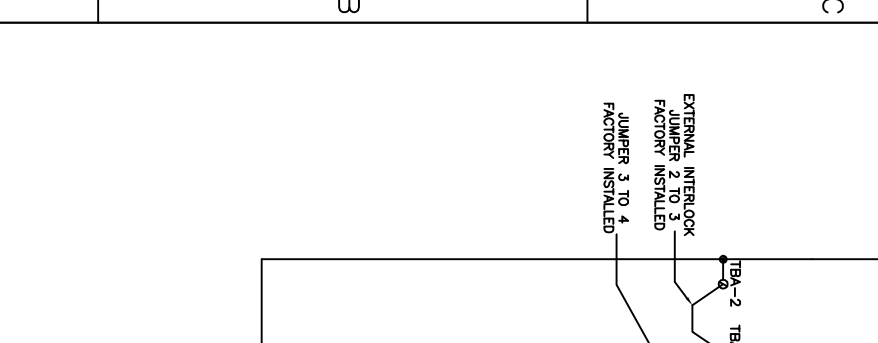
(SEE NOTE B)

NOTE A: INCOMING POWER CONNECTION:
 RUN CABLES IN SEPARATE METAL CONDUIT OR WIRE TRAY. DO NOT RUN WITH CONTROL WIRING OR MOTOR CABLES. CABLES TO BE SIZED PER NEC. PROVIDE LOW IMPEDANCE GROUND CONNECTION TO DRIVE CHASSIS. DO NOT CONNECT TO B+, B- TERMINALS. THESE TERMINALS ARE USED FOR EXTERNAL BRAKING IF REQUIRED.

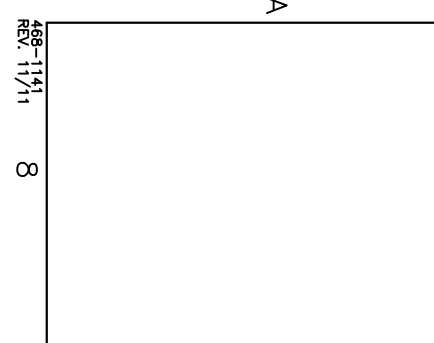
NOTE B: I/O CONNECTION:
 RUN 110VAC AND 24VDC CONTROL WIRING IN SEPARATE CONDUIT. COMMUNICATION WIRE TO BE SHIELDED. KEYPAD CABLE MUST BE LESS THEN 20 FEET.

NOTE C: MOTOR CONNECTION:
 RUN MOTOR CABLES IN SEPARATE METAL CONDUIT OR WIRE TRAY. DO NOT RUN WITH CONTROL WIRING OR POWER CABLES. CABLES TO BE SIZED PER NEC. PROVIDE LOW IMPEDANCE GROUND CONNECTION BETWEEN MOTOR AND DRIVE.

- NOTES:
- ENCLOSURE AND MOTOR(S) MUST BE GROUNDED. SEE INSTRUCTION MANUAL.
 - JUMPER IS FACTORY INSTALLED TO ENABLE START PERMISSIVE. CAN BE REPLACED WITH N/C CONTACT.
 - CLOSE TERMINALS 6 TO 8 OR 8 TO 12 TO START IN AUTO MODE - SEE MANUAL.
 - RELAYS SHOWN IN DE-ENERGIZED STATE.
 - WHEN PSG60F/PSG120F IS SUPPLIED, L3 WILL BE WIRED TO 1L3.
 - ELECTRIC INTERLOCK BY VFD SOFTWARE.
 - DO NOT MAKE ANY CONNECTIONS TO DC+, R+, R-, TERMINALS, THESE TERMINALS ARE USED FOR OPTIONAL DYNAMIC BRAKING.
 - ALTERNATE CONTROL PCB DIP SWITCH CONFIG SHOWN BELOW

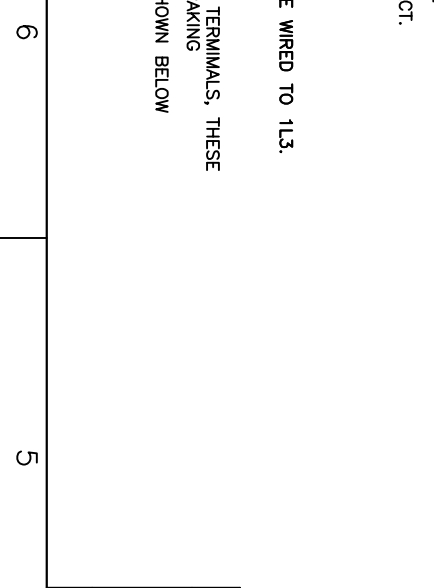


RELAY BOARD SLOT B
 (DRIVE RUN)
 (DRIVE FAULT)
 (DRIVE FAULT)



TO 24V CONTROL CIRCUIT - ALL FACTORY CONNECTIONS

LEGEND:
 ON OFF PS645
 CURRENT VOLTAGE AI2
 CURRENT VOLTAGE AI1



ADDED TABS 0010 THRU 0018 AND 1010 THRU 1018; ADDED HEATER TO SCHEMATIC ON 0010 THRU 0018 AND 1010 THRU 1018;

THIRD ANGLE PROJECTION

DWG. SIZE B

		FILE TYPE AutoCAD	DWG FILENAME 285447.DWG	ECO NUMBER ECO-041338	REVISION 005	G.O. NUMBER 285447-0004	DR RAK DATE 01/21/13	DATE 01/21/13	TITLE HMAX FRAME SIZES 4-7 INTELLIPASS
DWG NO. 285447-0004	DWG TYPE SCHEMATIC	SHEET 1 OF 1							