

Runway and Taxiway Inset Lights

PRO APF Series RCLI/TDZI/REXI – LED, ICAO

Runway centerline/touchdown zone/rapid exit taxiway indicator light

Compliances:

ICAO Annex 14 Vol. 1 and Part 4
NATO: STANAG 3316
FAA: AC 150/5345-46: Current Edition
FAA: EB67 Current Edition



Applications

The RCLI/TDZI light acts as a runway centerline and touchdown zone light. The RCL is a bidirectional light, typically white/white or white/red. The TDZI is a white unidirectional light. RCLI/TDZI may be used for any category ICAO, or military runway.

The REXI is installed on the runway and is used to indicate the distance to go to the nearest rapid exit taxiway. This is typically six yellow lights adjacent to the runway centerline, configured as a three - two - one sequence spaced 100 meters apart.

Features

- Wavetrac™ technology reduces power consumption up to 60% compared to incandescent
- Long life LED technology with rated projected life greater than 50,000 hours at 6.6A
- Dust- and watertight to IP68
- Modular design makes fixtures easy to maintain with fewer parts to stock
- Engineering Brief 67 current edition compliant dimming curve
- High frequency 400 Hz PWM helps eliminate flicker perception
- Compatible with all known CCR types*
- 3.5 Crest factor ensures compatibility with Series CCRs
- 10kV/5kA surge protection
- -40°C to +85°C operating temperature ensures safe movement of aircraft in the most challenging locations
- Failure monitoring of fixtures
- 0.88 second switch-on time
- IEC Style 3, 6-13mm low protusion housing
- Low profile, <0.25" (6.35mm) – FAA Style 3
- Optional arctic kit

Ordering Information

____ I - A P 1 - ____ - ____ - ____ - ____ - ____ - ____

Fixture type:

RCLI = Runway centerline
TDZI = Touchdown zone
REXI = Rapid exit taxiway indicator light

Series version:

AP1 = PRO APF

Color side A*:

W = White
R = Red
Y = Yellow
G = Green

Color side B**:

W = White
R = Red
Y = Yellow
G = Green
N = No light source

ICAO figure:

05 = ICAO Fig. A2-5 (TDZI)
06 = ICAO Fig. A2-6 (RCLI/REXI)
07 = ICAO Fig. A2-7 (RCLI/REXI)
R7 = ICAO Fig. A2-7 (RCLI/REXI) CAT I and CAT II

Fixture dimension:

SMS = Support ring, 303mm/11.94" straight, metric hardware†
SMC = Support ring, 303mm/11.94" curved, metric hardware†
SMR = Support ring, 303mm/11.94" right toe, metric hardware†
SML = Support ring, 303mm/11.94" left toe, metric hardware†
SES = Support ring, 303mm/11.94" straight, ANSI hardware†
SEC = Support ring, 303mm/11.94" curved, ANSI hardware†
SER = Support ring, 303mm/11.94" right toe, ANSI hardware†
SEL = Support ring, 303mm/11.94" left toe, ANSI hardware†

Plug options:

P1 = One plug (unidirectional or bidirectional fixture)
P2 = Two plugs (bidirectional fixture)
B1 = One plug with two power supplies

Heater options:

0 = No options
1 = Arctic kit

General options:

0 = Support ring with no support ring gasket
1 = Support ring with support ring gasket
2 = No support ring with support ring gasket
3 = No support ring and no support ring gasket

*Left toe on bidirectional curved units. Either left or right toe on unidirectional toed units.

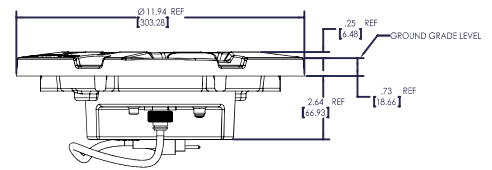
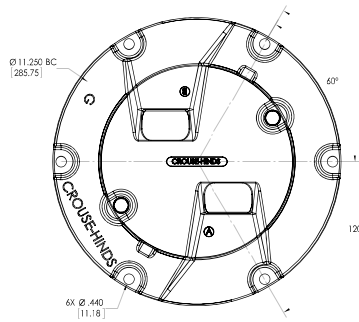
**Right toe on bidirectional curved units. B side not used on unidirectional units.

* Operates with Thyristor (Series) CCRs across 6 or 8 steps for ICAO.

Outline Drawings

Dimensions:

Instruction manual:	1228
Shipping weight:	5.4 lbs. 2.44 kg.
Shipping volume:	0.17 cu. ft. 0.004 m ³



*Order base separately.

Photometric Data

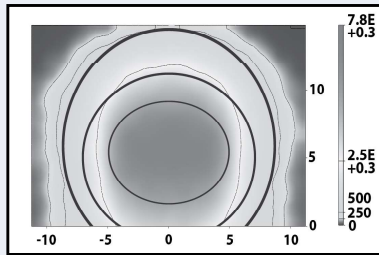


Figure 2-5. White

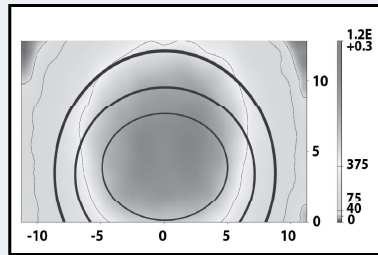


Figure 2-6. Red

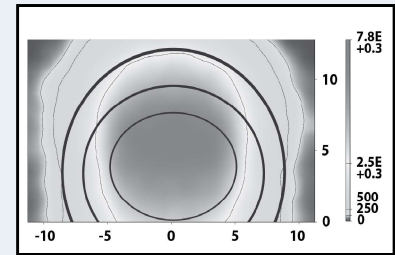


Figure 2-6. White

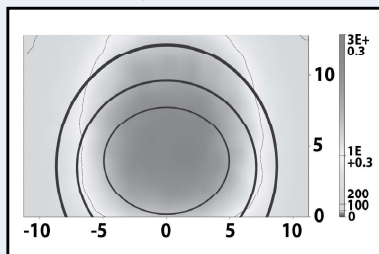


Figure 2-6. Yellow

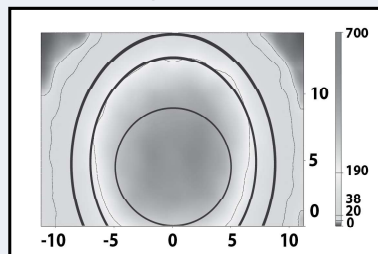


Figure 2-7. Red CAT I & II

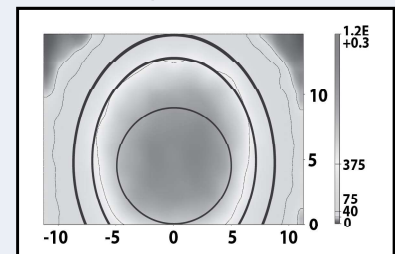


Figure 2-7. Red CAT III

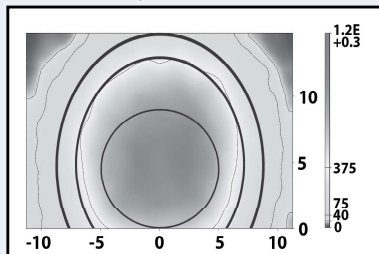


Figure 2-7. White CAT III

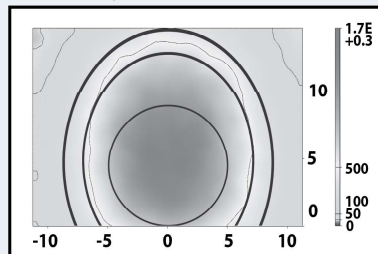


Figure 2-7. Yellow CAT I & II

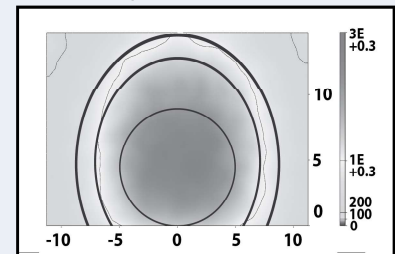


Figure 2-7. Yellow CAT III

Fig.	Type	Color	Power VA unidirectional	Power VA bidirectional P1	Power VA bidirectional P2 & B1*	Transformer**	Power factor at all steps
2-5	TDZI	W	12.4	X	X	10W/15W	0.99
2-6, 2-7 (CAT III)	RCLI	W or WW	12.4	18.8	24.8	20W/25W***	0.99
2-6, 2-7 (CAT III)	REXI	Y	9.4	X	X	10W/15W	0.99
2-6, 2-7 (CAT III)	RCLI	R or RW or WR	9.8	22.2	22.2	20W/25W***	0.99
R7, 2-7 (CAT I/II)	RCLI	W or WW	9.4	12.8	18.8	20W/25W***	0.99
R7, 2-7 (CAT I/II)	REXI	Y	7.7	X	X	10W/15W	0.99
R7, 2-7 (CAT I/II)	RCLI	R or RW or WR	8.1	11.5	17.5	20W/25W***	0.99

*Use 65W transformer with B1 option.

**Use 10W/15W transformer on each side with P2 option.

***Use 30W/45W in place of 10W/15W, 65W in place of 20W/25W and 100W in place of 65W with the arctic kit option.

Accessories & Renewal Parts

Item description	Catalog number	Item description	Catalog number
LED module replacements – white	21671-W	Power supply replacement kit with arctic kit support	21645-2
LED module replacements – red	21671-R	Feed through assembly	21122
LED module replacements – yellow	21671-Y	O-ring optical housing	10035-0062
Lens replacement kit – 850A/B	21642-C	External seal gasket – 165mm bore	21612
Arctic kit lens replacement kit	21644-1	External seal gasket – 167.9mm bore	21613
Power supply replacement kit	21645-1	External seal Gasket – 168.7mm bore	21614
		2 pc. lock washer kit (qty. 2)	21647-2

www.crouse-hinds.com/airportlighting

Home Office: United States – +1 860-683-4300

International Offices: Canada • China • Dubai • Mexico • Brazil