

PRO APF Series TCLI-LED, ICAO

Taxiway Centerline Light

Compliances:

ICAO Annex 14 Vol. 1 and Part 4
NATO: STANAG 3316
FAA: AC 150/5345-46: Current Edition
FAA: EB67 Current Edition



Applications

The TCLI is a taxiway centerline light that is used primarily as a ground traffic aid during periods of low visibility to guide aircraft between the runway and the parking stand. The TCLI is usually a yellow or green bidirectional light.

Features

- Wavetrac™ technology reduces power consumption up to 60% compared to incandescent
- Long life LED technology with rated projected life greater than 50,000h at 6.6A
- Dust and water tight to IP 68
- Modular design makes fixtures easy to maintain with fewer parts to stock
- Engineering Brief 67 current edition compliant dimming curve
- High frequency 400Hz PWM helps eliminate flicker perception
- Compatible with all known CCR types*
- 3.5 Crest factor ensures compatibility with Series CCRs
- 10kV/5kA surge protection
- -40C to +85C operating temperature ensures safe movement of aircraft in the most challenging locations
- Failure monitoring of fixtures
- IEC Style 3, 6-13mm low protrusion housing
- Low Profile, < .25" (6.35mm) – FAA Style 3
- Optional arctic kit

Ordering Information

T C L I - A P 1 - 1 - 0 8 - - -

Fixture Type:

TCLI = Taxiway Centerline

Series Version:

AP1 = ProAPF1

Color Side A:

Y = Yellow

G = Green

Color Side B:

Y = Yellow

G = Green

N = No Light Source

ICAO Figure:

12 = Wide Beam, Cat III, ICAO fig A2-12

13 = Narrow Beam, Cat III, ICAO fig A2-13

14 = Curved Sections, Cat III, ICAO fig A2-14

15 = Wide Beam, Cat II, ICAO fig A2-15

16 = Curved Sections, Cat II, ICAO fig A2-16

Fixture Dimension:

08S = IEC compliant 203mm/8inch straight

08R = IEC compliant 203mm/8inch right-toe

08L = IEC compliant 203mm/8inch left-toe

08C = IEC compliant 203mm/8inch curved

R and L options for ICAO figures 2-14 and 2-16 only (no straight option)

Plug Options:

P1 = One plug

P2 = Two plugs

B1 = One plug, Lamp Bypass Enabled*

Heater Options:

0 = No options

1 = Arctic kit

Gasket Options:

0 = No options

1 = Gasket 1 (Canister Bore 6.496mm – C.H. Canister #22537)

Contact factory for other gasket sizing

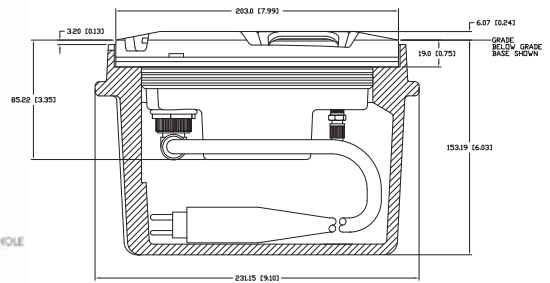
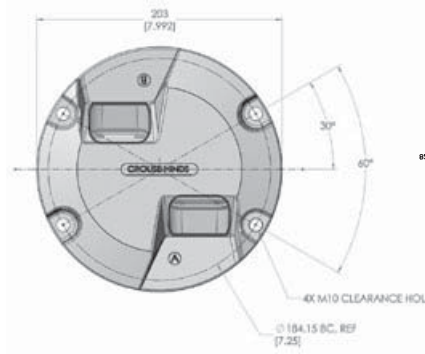
*A larger 65W transformer is recommended if this option is chosen. For Arctic Kit a 100W transformer is recommended.

*Operates with Thyristor (Series)
CCRs across 6 or 8 steps for ICAO

Outline Drawings

Dimensions:

Instruction Manual:	1136
Shipping Weight:	5.4 lbs. 2.44 kg.
Shipping Volume:	.17 cu. ft. .004 m ³



Photometric Data

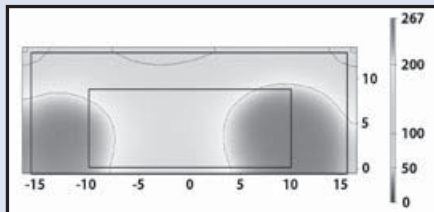


Figure 2-12

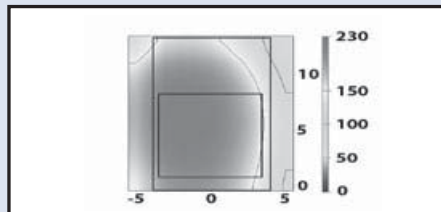


Figure 2-13

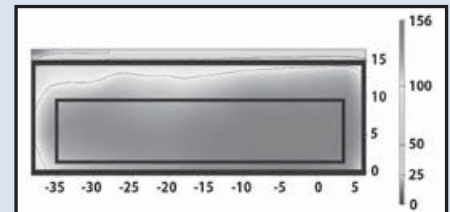


Figure 2-14

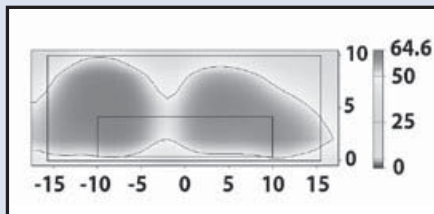


Figure 2-15

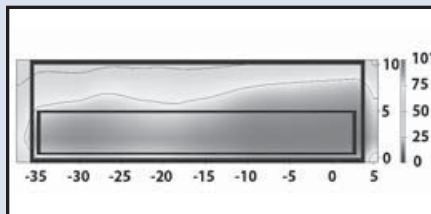


Figure 2-16

Fig	Type	Color	Power VA Unidirectional	Power VA Bidirectional P1	Power VA Bidirectional P2*	Transformer**	Power Factor at All Steps
2-12	TCLI	G or Y or combination	10.1	14.3	20.3	10W/15W***	0.99
2-13	TCLI	G or Y or combination	6.9	7.8	13.8	10W/15W***	0.99
2-14	TCLI	G or Y or combination	9.4	12.8	18.8	10W/15W***	0.99
2-15	TCLI	G or Y or combination	7.9	9.8	15.8	10W/15W***	0.99
2-16	TCLI	G or Y or combination	7.9	9.8	15.8	10W/15W***	0.99

* Use 65W transformer with B1 Option.

** Use 10W/15W transformer on each side with P2 Option and Unidirectional P1 Option

*** Use 30W/45W in place of 10W/15W, 65W in place of 20W/25W and 100W in place of 65W with the Arctic Kit Option.

Accessories & Renewal Parts

Item Description	Catalog Number	Item Description	Catalog Number
LED Module Replacements – Fig A2-12/Fig A2-15 Green Module	21664-F212-F215-G	Lens Replacements, Arctic Kit Fig A2-12, A2-13, A2-15	21644-1
LED Module Replacements – Fig A2-12/Fig A2-15 Yellow Module	21664-F212-F215-Y	Lens Replacements, Arctic Kit Fig A2-14, A2-16	21644-2
LED Module Replacements – Fig A2-13 Green Module	21664-F213-G	Power Supply Replacements Kit	21645-1
LED Module Replacements – Fig A2-14/Fig A2-16 Green Module	21664-F214-F216-G	Power Supply Replacements Kit, Arctic Kit Support	21645-2
LED Module Replacements – Fig A2-14/Fig A2-16 Yellow Module	21664-F214-F216-Y	Feed through Assembly	21122
Lens Replacements – Fig A2-12, A2-13, A2-15	21642-C	O-Ring Optical Housing	10035-0062
Lens Replacements – Fig A2-14, A2-16	21643	External Seal Gasket, 165mm bore	21612
		External Seal Gasket, 167.9mm bore	21613
		External Seal Gasket, 168.7mm bore	21614
		2-Piece Lock Washer Kit Qty 2	21647-2