

CEAG Products  
Pendant light fittings

CROUSE-HINDS  
SERIES



## HPL - Your Reliable LED Power Light

Pendant Light Fittings for Ex-Areas Zone 1 and 21



**EATON**

*Powering Business Worldwide*

# LED Low Bay Lighting For Harzardous Areas Zone 1/21

Zone 1/21

### Lighting under harsh conditions

The industrial low bay lighting HPL in LED technique is especially suited for the specific lighting of machines, production areas or facilities indoor and outdoor under harsh and rough conditions like vibrations, dust, moisture or corrosive atmospheres and extreme temperatures.

### Replacement of conventional light fittings up to 150 W

With a luminous flux of the light fittings of up to 8,000 lm this fitting can be used to replace comparable conventional light sources with an equivalent power consumption up to 175 W.

### High efficient LED technology

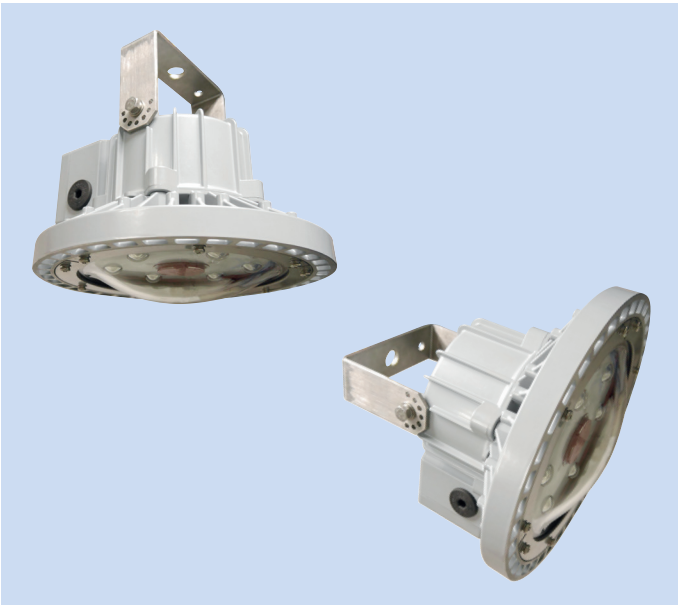
High efficient power LED module and more than 100 Lumen/Watt enables up to 66 % energy-cost savings compared to conventional HID lamp

### Application areas

- Heavy Industry
- Chemical Industry
- Pharmaceutical Industry
- Marine Industry
- Waste water treatment

### Energy savings

Model	Equivalent HID Luminaire	Energy savings
<b>HPL</b>		
HPL 3L	70 W - 100 W	Up to 58%
HPL 5L	100 W - 150 W	Up to 66%
HPL 7L	150 W - 175 W	Up to 60%
HPL 8L	150 W - 175 W	Up to 60%



### Features

- High-efficient LED module
- Wide temperature range from -40 °C up to +50 °C
- Compact and light weight design for flexible applications
- Available in cold white CCT 5700 K and warm white 3000 K
- High efficient heatsink design for an optimised temperature management
- Impact, anti-shock and vibration resistant
- Mercury- and lead-free for optimal environment protection
- High degree of protection IP66 for harsh environments



# Ordering details, Technical data, Polar curve, Dimension drawing

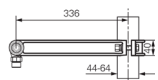
HPL pendant light fitting for Ex-areas Zone 1 and 2 I

## Ordering details



Type	Lamp / illuminant	Light output	Description	Order No.
<b>HPL pendant light fitting</b>				
HPL 3L	LED system 27 W <sup>1)</sup>	3.561 lm	LED pendant light fitting	<b>CCL2005266U/B4</b>
HPL 5L	LED system 50 W <sup>1)</sup>	4.923 lm	LED pendant light fitting	<b>CCL2005282U/B4</b>
HPL 7L	LED system 70 W <sup>1)</sup>	6.774 lm	LED pendant light fitting	<b>CCL2005306U/B4</b>
HPL 8L	LED system 80 W <sup>1)</sup>	8.135 lm	LED pendant light fitting	<b>CCL2005314U/B4</b>
<b>HPL pendant light fitting with self contained battery</b>				
HPL 5L EM1	LED system 55 W <sup>1)</sup>	4.923 lm	LED pendant light fitting	<b>CCL2005234U/T2/B4</b>

## Accessories



Type	Content	OU	Order No.
PMB	Pole mounting bracket with fixing screws for use with mounting bracket	1	<b>NOR 000 005 110 836</b>

<sup>1)</sup> Scope of delivery, including LED-system and swivel bracket

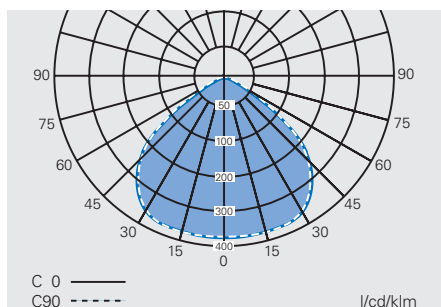
## TECHNICAL DATA

	HPL
EC-Type Examination Certificate	EPT 16 ATEX 2405 X
IECEx Certificate of Conformity	IECEx NEP 20.0022X
Marking accd. to 2014/34/EU	Ⓜ II 2 G Ex db eb mb op is IIC T6 Gb Ⓜ II 2 D Ex tb op is IIIC T80.C Db
Marking accd. to IECEx	Ex db e mb IIC T6 Ex tb III C T80°C Db IP66
Permissible ambient temperature	-40 °C up to +50/45 °C
Driver lifetime	C10 ~100,000 h at t <sub>a</sub> = +25 °C
LED lifetime	L70 ~100,000 h at t <sub>a</sub> = +25 °C
Rated voltage	100 - 240 V AC / 108 - 250 V DC
Frequency	0/50 - 60 Hz
Power factor cos φ	≥ 0.9
Circuit	Electronic driver
Protection class	I
Lamp / illuminant	LED System
Rated luminous flux ±10 %	see ordering details
Light colour / CRI	5700 K / R <sub>a</sub> >70 (warm white on request)
Dimensions (L x W x H)	250 x 250 x 174 mm Standard version, 250 x 250 x 230 mm Emergency version
Enclosure colour	grey
Enclosure material	Light alloy, powder coated
Weight	5 kg Standard version, 6.5 kg Emergency version
Emergency duration	1.5h (3h on request)
Light output in emergency mode	30% (15% with 3h option)
Battery type	Ni-Cd 3Ah
Cable glands / gland plates / enclosure drilling	Metal thread 2 x M25 with 1 x plastic plug (M20 on request)
Degree of protection accd. to EN 60529	IP66
Protective cover / protective bowl	Toughened clear glass (opaque glass on request)
Swivel bracket	Sheet steel, painted (stainless steel on request)

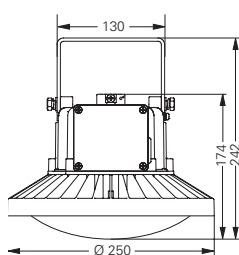
<sup>2)</sup> Please ask our sales representatives for the special order number

## Dimension drawing / Polar curve

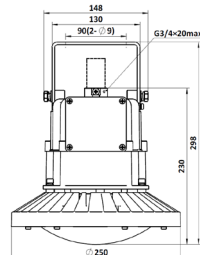
### Polar curve HPL



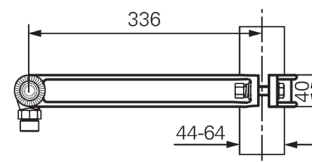
### Dimension drawing HPL in mm



Standard version



Emergency version



Pole mounting bracket

Eaton's Crouse-Hinds Business

# The safety you rely on.

See the complete offering of Hazardous and Industrial Products at [www.crouse-hinds.de](http://www.crouse-hinds.de).

**U.S. (Global Headquarters):  
Eaton's Crouse-Hinds  
Business**

1201 Wolf Street  
Syracuse, NY 13208

(866) 764-5454  
FAX: (315) 477-5179  
FAX Orders Only:  
(866) 653-0640

[CrouseCustomerCTR@Eaton.com](mailto:CrouseCustomerCTR@Eaton.com)

**For more information:**

If further assistance is required, please contact an authorized Eaton Distributor, Sales Office, or Customer Service Department.

**Australia**

Phone +61-2-8787-2777  
Fax +61-2-9609-2342  
[crousehindsanz@eaton.com](mailto:crousehindsanz@eaton.com)

**China**

Phone +86-21-2899-3600  
Fax +86-21-2899-4055  
[ECHsales@eaton.com](mailto:ECHsales@eaton.com)

**Great Britain**

Phone +44-247-630-89 30  
Fax +44-247-630-10 27  
[sales5@eaton.com](mailto:sales5@eaton.com)

**India**

Phone +91-124-4683888  
Fax +91-124-4683899  
[cchindia@eaton.com](mailto:cchindia@eaton.com)

**Canada**

Toll Free +1-800-265-0502  
Fax +1-800-263-9504  
Fax orders only:  
+1-866-653-0645

**Korea**

Phone +82-2-3484-6783  
Fax +82-2-3484-6778  
[CCHK-sales@cooperindustries.com](mailto:CCHK-sales@cooperindustries.com)

**Mexico/Latin America/  
Caribbean**

Phone +52-555-804-4000  
Fax +52-555-804-4020  
[mxmercadotecnica@cooperindustries.com](mailto:mxmercadotecnica@cooperindustries.com)

**Spain**

Phone +34-9-37362710  
Fax +34-9-37835055  
[sales.CCH.es@cooperindustries.com](mailto:sales.CCH.es@cooperindustries.com)

**Middle East (Dubai)**

Phone +971-4-427-2522 / 2500  
Fax +971-4-429-8521  
[CHMEsales@Eaton.com](mailto:CHMEsales@Eaton.com)

**The Netherlands**

Phone +31-10-2452145  
Fax +31-10-2452121  
[CHRD\\_mail@Eaton.com](mailto:CHRD_mail@Eaton.com)

**Norway**

Phone +47-32-244600  
Fax +47-32-244646  
[CHLloffice@eaton.com](mailto:CHLloffice@eaton.com)

**Singapore:**

Phone +65-6645-9888  
Fax +65-6297-4819  
[CHSI-Sales@Eaton.com](mailto:CHSI-Sales@Eaton.com)

**Turkey**

Phone +90-216-464-20-20  
Fax +90-216-464-20-10  
[infoEGTurkey@eaton.com](mailto:infoEGTurkey@eaton.com)

**Russia**

Phone +7-495 510-24-27  
Fax +7-495 510-24-28  
[info@cooper.ru.com](mailto:info@cooper.ru.com)  
[www.cooper-russia.ru](http://www.cooper-russia.ru)

**Eaton's Crouse-Hinds Business**

Neuer Weg – Nord 49  
D-69412 Eberbach

Phone +49 (0) 6271/806-500  
Fax +49 (0) 6271/806-476  
E-mail [info-ex@eaton.com](mailto:info-ex@eaton.com)  
Internet [www.crouse-hinds.de](http://www.crouse-hinds.de)

**Eaton**

1000 Eaton Boulevard  
Cleveland, OH 44122  
United States  
[Eaton.com](http://Eaton.com)

© 2023 Eaton Corporation  
All Rights Reserved  
Printed in Germany  
Publication No. BR 300 8000  
Nov 2023 MS

Changes to the products, to the information contained in this document, and to prices are reserved; so are errors and omissions. Only order confirmations and technical documentation by Eaton is binding. Photos and pictures also do not warrant a specific layout or functionality. Their use in whatever form is subject to prior approval by Eaton. The same applies to Trademarks (especially Eaton, Moeller, and Cutler-Hammer). The Terms and Conditions of Eaton apply, as referenced on Eaton Internet pages and Eaton order confirmations.

**Eaton's Crouse-Hinds Business**

1201 Wolf Street  
Syracuse, NY 13208  
(866) 764-5454  
[CrouseCustomerCTR@Eaton.com](mailto:CrouseCustomerCTR@Eaton.com)

Eaton is a registered trademark.

All other trademarks are property of their respective owners.



Powering Business Worldwide