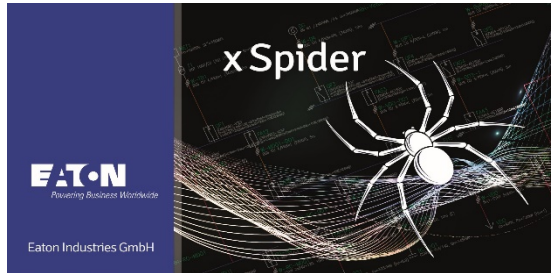


# xSpider 3.4 - Installation Instructions

## How to solve troubles with installation

- Support of older operating systems of Microsoft has been terminated
- System changes in xSpider 3.4 (new compilation from 08/2020)



[www.eaton.eu/xspider](http://www.eaton.eu/xspider)

### xSpider 3.4 – system improvement

- **DevExpress engine:** user interface, menu, grids, spreadsheet engine, XLS/XLSX engine, PDF engine
- **VectorDraw engine:** graphics, CAD engine








# xSpider 3.4 - Installation Instructions

**Operating systems Windows 8 and Windows 10 are supported only.**

- **.NET Framework 4.5.2** (Windows system library) is newly requested
  - Requested by user interface and graphics engines update – necessary for further development.
  - **Benefit:** Better performance (theoretically), better security, automatic updates and fixes provided by Microsoft.
- **Access Database Engine 2016** is newly requested
  - Necessary because of support of older products has been terminated from Microsoft side - problems with the functionality of components that are no longer supported could occur.
  - **Benefit:** better performance when working with databases, improved security, automatic updates and fixes provided by Microsoft.

# xSpider 3.4 - Installation Instructions

## Supported operating systems

Operating system		Support
Windows 2000		Not supported, xSpider cannot be run
Windows XP		Not supported, xSpider cannot be run
Windows Vista		Not supported, xSpider cannot be run
Windows 7		Not supported, xSpider can be run Installation .NET framework 4.5.2 probably needed (if required)
Windows 8, 8.2	 	Supported, xSpider can be run Installation .NET framework 4.5.2 probably needed (if required)
Windows 10		Is supported, xSpider can be run Installation .NET framework is not needed (standard part of Windows 10 operating system)

# xSpider 3.4 - Installation Instructions

**.NET Framework 4.5.2** : install only if it is required







- Web Microsoft: <https://www.microsoft.com/en-us/download/details.aspx?id=42643>
- See Web xSpider: [www.eaton.eu/xspider](http://www.eaton.eu/xspider), section Support

This is the so-called Web Installer - after launch, the necessary files are automatically downloaded according to the situation on the target computer and the installation is performed.



# xSpider 3.4 - Installation Instructions

## Access Database Engine 2016 : install only if it is required (1/3)

Office		Support
Office XP, Office 2001, 2003, 2007		Not supported Access Database Engine 2016 must be installed
Office 2010, 2013		Supported Access Database Engine 2016 must be installed (only if it is required)
Office 2016, 2019		Supported There is no need to install anything
Office 365, Microsoft 365	 	Supported Microsoft 365 (Office 365) Access Runtime must be installed (only if it is required)
Alternative tools Open Office, ...		Supported Access Database Engine 2016 must be installed (only if it is required)

# xSpider 3.4 - Installation Instructions



## Access Database Engine 2016 : install only if it is required (2/3)

Microsoft Office 2007 and older, 2010, 2013, no Microsoft Office (alternative tools like Open Office, ...)

- Web Microsoft: <https://www.microsoft.com/en-us/download/details.aspx?id=54920>

File Name:		File Size:
AccessDatabaseEngine.exe	← 32-bit	77.0 MB
AccessDatabaseEngine_X64.exe	← 64-bit	79.0 MB

- Web xSpider: [www.eaton.eu/xspider](http://www.eaton.eu/xspider), section Support

 AccessDatabaseEngine_2016_x64	← 64-bit	exe	82 837 544
 AccessDatabaseEngine_2016_x86	← 32-bit	exe	80 711 040

# xSpider 3.4 - Installation Instructions

## Access Database Engine 2016: install only if it is required (3/3)

You must install the same bit version of the Access Database Engine as Office currently installed has:

- 32-bit Office ▶ 32-bit Access Database Engine 2016.
- 64-bit Office ▶ 64-bit Access Database Engine 2016.
- It is not known (not enough information)
  - ▶ 32-bit Office is mostly installed
  - ▶ 32-bit Access Database Engine 2016 is recommended.



# xSpider 3.4 - Installation Instructions

**Microsoft 365 (Office 365) Access Runtime:** install only if it is required:

- Web Microsoft: <https://support.microsoft.com/en-us/office/download-and-install-office-365-access-runtime-185c5a32-8ba9-491e-ac76-91cbe3ea09c9>
- Web xSpider: [www.eaton.eu/xspider](http://www.eaton.eu/xspider), section Support

You must install the same bit version of the Access Runtime as Office currently installed has:

- 32-bit Office ► 32-bit Access Runtime.
- 64-bit Office ► 64-bit Access Runtime.

This is the so-called Web Installer - after launch, the necessary files are automatically downloaded according to the situation on the target computer and the installation is performed.

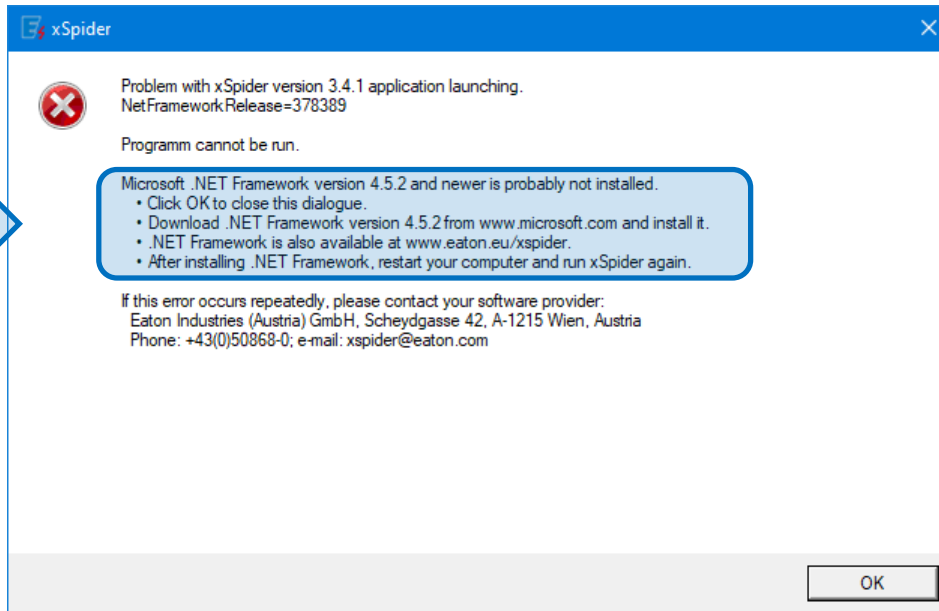




# xSpider 3.4 - Installation Instructions

## Error messages after xSpider first launch (1/4):

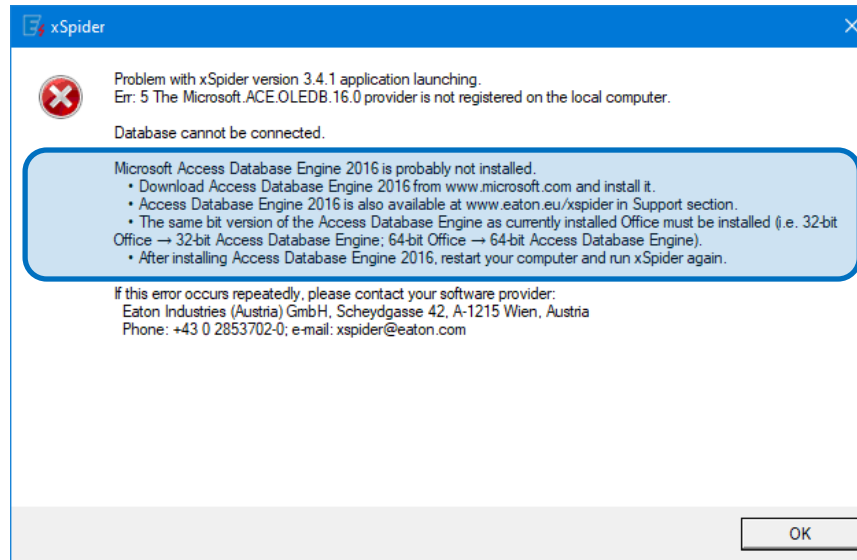
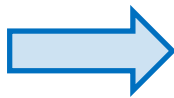
- .NET Framework 4.5.2 is not installed
  - ▶ download .NET Framework 4.5.2 and install it ([see slide No. 4](#))



# xSpider 3.4 - Installation Instructions

## Error messages after xSpider first launch (2/4)

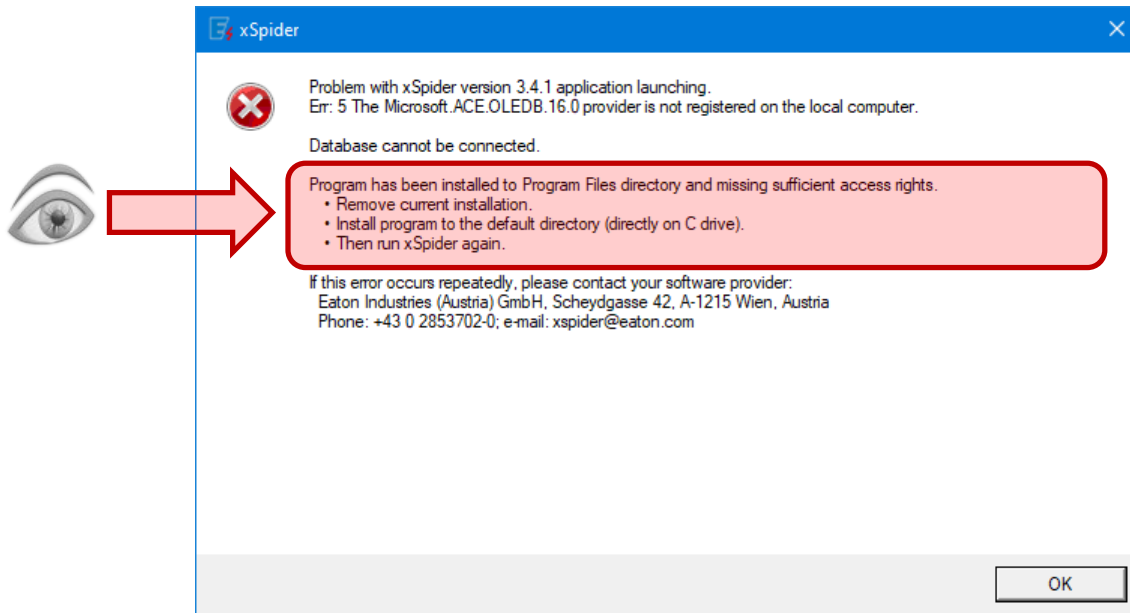
- Access Database Engine 2016 is not installed
  - ▶ download Access Database Engine 2016 from Microsoft web, or xSpider web and install it ([see slide No. 6](#))



# xSpider 3.4 - Installation Instructions

## Error messages after xSpider first launch (3/4)

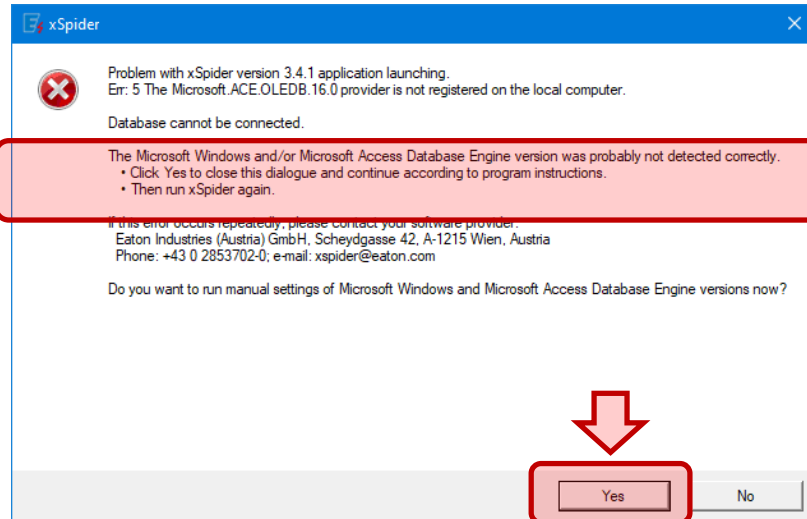
- Program was installed to Program Files directory and missing sufficient access rights
  - ▶ uninstall xSpider and install it again to the default directory (directly on C drive).



# xSpider 3.4 - Installation Instructions

## Error messages after xSpider first launch (4/4)

- Access Database Engine has been installed, but bit version was detected incorrectly
  - Click on YES button
  - Follow instructions on the screen. Alternatively, repeat and try all possible variants:  
Windows 32-bit + Engine 32-bit // Windows 64-bit + Engine 32-bit // Windows 64-bit + Engine 64-bit



# xSpider 3.4 - Installation Instructions

## Technical support



**Eaton Industries (Austria) GmbH**  
Scheydgasse 42, A-1215 Wien, Austria  
**Phone: +43 0 28 53 7 02-0**  
**[xspider@eaton.com](mailto:xspider@eaton.com)**  
**[www.eaton.eu/xspider](http://www.eaton.eu/xspider)**

