



# Power. Empowered.

## Eaton's Power Xpert Dashboard

Switchgear technology does not change often, but when it does, Eaton is there.

Eaton's Power Xpert® Dashboard is an intuitive, innovative way to improve your safety and efficiency, allowing for seamless operation. Take your systems into the future with a touch. Operate from almost anywhere. Focus on what matters most. Experience the Power Xpert Dashboard. Power. Empowered.

### Operate from a safe distance

- Diagnose problems with suggested maintenance timetable
- Remote circuit breaker open and close without additional hardware
- Get visual indication of arc flash hazard levels and required PPE

### Minimize systems training

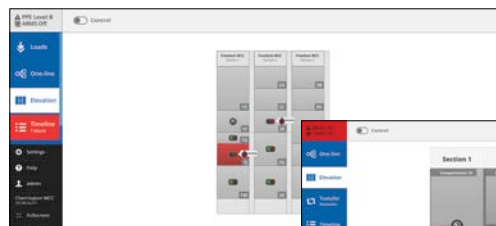
- Clear symbols and color coding provides intuitive feedback
- Pan, pinch and zoom touchscreen with stacking
- User interface scalable for mobile devices

### Expert diagnostics at your fingertips

- Clear identification of tripped breaker and reason for trip
- Import O&M manuals, power system study and breaker curves
- Factory tested with switchgear/MCC, reducing on-site commissioning

### Applications

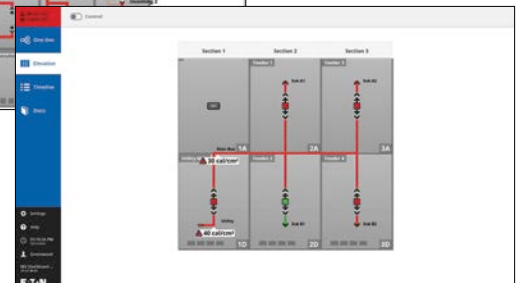
- Switchgear/MCC, kiosk and wall-mount configurations available



Low-voltage motor control centers



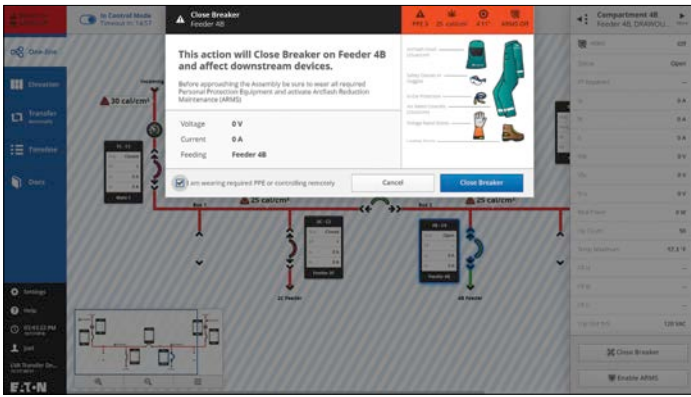
Low-voltage switchgear



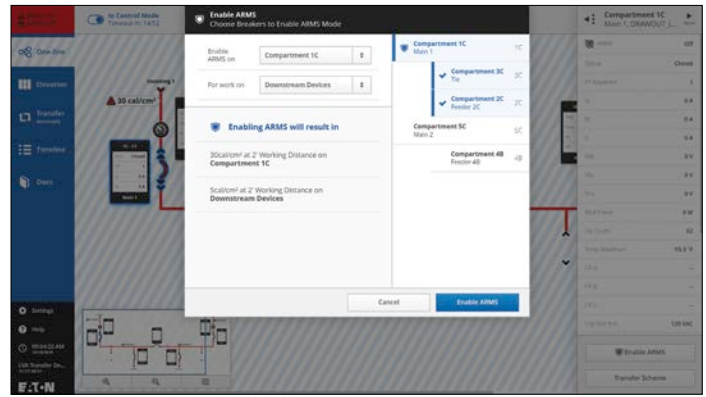
Medium-voltage switchgear



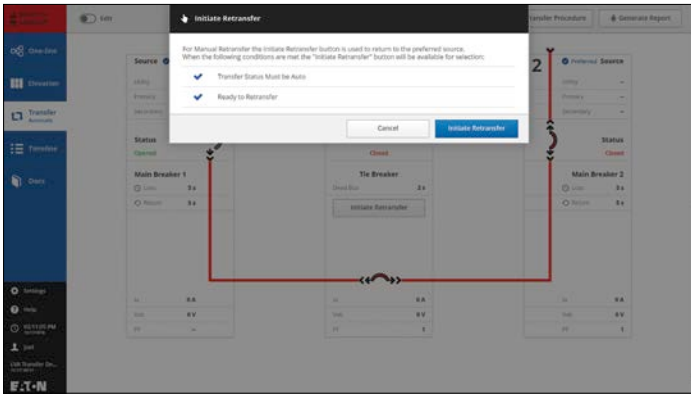
Powering Business Worldwide



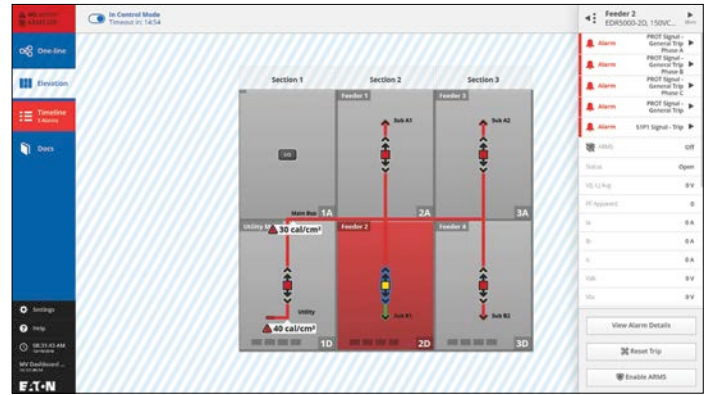
Control breakers from outside the arc-flash boundary



Enable Arcflash Reduction Maintenance mode



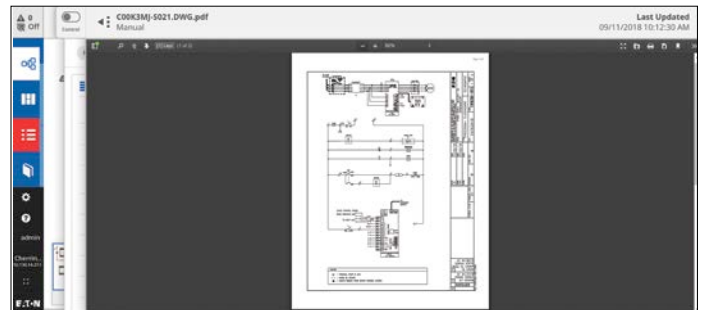
Interact with standard main-tie-main automatic transfer scheme control



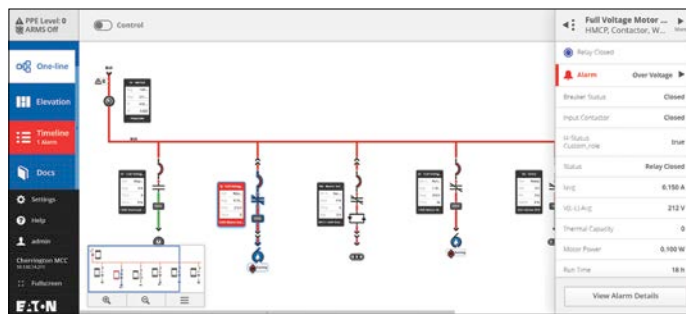
View breaker trip information



View electronic component information details



View equipment documents—wiring diagram



See alarms

Eaton  
1000 Eaton Boulevard  
Cleveland, OH 44122  
United States  
Eaton.com

© 2018 Eaton  
All Rights Reserved  
Printed in USA  
Publication No. PA150002EN / Z21951  
November 2018

Eaton is a registered trademark.  
All other trademarks are property of their respective owners.

Follow us on social media to get the latest product and support information.

