

3M™+ Fire Barrier Self-Locking Pillows

Features & Benefits

- Extremely easy to install - saves time and labor
- Easy removal and fully reusable - with no blocking or fusing of materials
- No cutting required, no left over debris
- Up to three-hour UL Listed F-Rating
- UL Listed systems up to 540 sq. in. opening
- Passes hose stream test without cumbersome wire mesh
- Smoke seal tested and listed
- Listed for blank or filled openings in gypsum wallboard or concrete
- Available in three (3) sizes
- One (1) or two (2) cable trays per opening

This product will intumesce and lock tightly into place eliminating the prep work of cutting or leaving any messy debris. The resulting barrier retards the transmission of smoke, fire, and toxic gases from spreading between adjacent rooms and floors for the rated time period.

Catalog Number	Type	Pillow Size in. (mm)
FSP-SLP-S	Small	2" x 4" x 9" (51 x 101 x 228)
FSP-SLP-M	Medium	2" x 6" x 9" (51 x 152 x 228)
FSP-SLP-L	Large	3" x 6" x 9" (76 x 152 x 228)



The following charts give the number of 3M pillows needed to completely firestop an opening that cable tray passes through.* Two (2) sticks of moldable putty (part number FSP-MPS) are also needed for each opening.

Flextray			
Width	Height		
	2	4	6
2	4	--	--
4	5	7	--
6	6	8	--
8	7	10	13
12	10	13	17
16	12	17	21
18	13	18	24
20	15	20	26
24	17	24	30
30	21	29	--
36	22	--	--

Two (2) Side Rail Cable Tray				
Width	Height			
	4	5	6	7
6	8	9	10	11
9	11	12	14	15
12	13	15	17	19
18	18	21	24	26
24	24	27	30	34
30	29	33	37	41
36	34	39	44	49
42	39	45	51	56
48	45	51	57	64

Pan Tray			
Width	Height		
	4	5	6
6	8	9	10
9	11	12	14
12	13	15	17
18	18	21	24
24	24	27	30
30	29	33	37
36	34	39	44

UL Listed Systems

Concrete Wall - C-AJ-4056 3 HR F-Rating, 3/4 HR T-Rating

Gypsum Wall - W-L-4037 1 HR and 2 HR F-Ratings, 0 HR and 1/2 HR T-Ratings

For tray larger than 4" x 24", or a tray style other than ladder tray call 1-800-328-1687 then option 8 to obtain a free engineering judgement letter.

* Number of pillows refers to 3M's medium self-locking pillows (part number FSP-SLP-M) and are based on an opening that is 1.5" larger than the tray on all sides.

Example: For a 4" x 12" tray the recommended opening would be 7" x 15".

† 3M™ is a registered trademark of the 3M Company

3M™† Fire Barrier Moldable Putty+



Features & Benefits

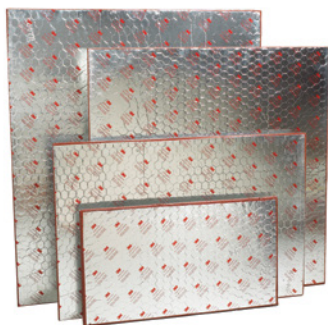
- Pliable. Easy to mold into any shape
- Adheres. Sticks well to most surfaces but not to the applicator's hands
- Conformable. Pads easily conform and adhere to a wide variety of metallic and non-metallic electrical outlet boxes
- UL Listed. Wide range of UL Listed systems
- Ages Well. Excellent aging properties



3M Fire Barrier Moldable Putty+ is a one-part, halogen-free product designed to firestop electrical outlet boxes and a wide variety of through-penetrations including cable, conduit, insulated pipe and metal pipe, which penetrate fire-rated construction.

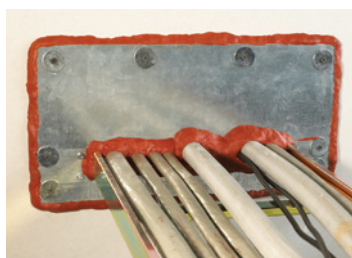
Catalog Number	Type	Size	
		in.	(mm)
FSP-MPP-4x8	Small Pad	4" x 8"	(101 x 203)
FSP-MPP-7x7	Medium Pad	7" x 7"	(178 x 178)
FSP-MPP-9x9	Large Pad	9 1/2" x 9 1/2"	(241 x 241)

3M™† Fire Barrier CS-195+ Composite Sheets



Features & Benefits

- Ideal for fire-stopping blank openings and through-penetrations of multiple cable, pipe ducts, buss ducts and cable trays
- Intumescent
- Lightweight and easy to handle - just cut and form to fit
- Easy to install using common trade tools
- Easy to fasten - bolt punch or drill through and use self-tapping screws or anchor bolts
- Bottom-of-floor applications available
- No mixing or damming required
- Re-enterable
- Documented aging properties



This organic/inorganic elastomeric sheet is bonded on one side to a layer of 28-gauge galvanized steel. The other side is reinforced with a steel-wire mesh and covered with aluminum foil.

Catalog Number	Type	Size	
		in.	(mm)
FSP-CS-16x28	Sheet	16" x 28"	(406 x 711)
FSP-CS-28x52	Sheet	28" x 52"	(711 x 1320)
FSP-CS-36x24	Sheet	36" x 24"	(914 x 609)
FSP-CS-36x36	Sheet	36" x 36"	(914 x 914)
FSP-CS-36x41	Sheet	36" x 41"	(914 x 1041)

† 3M™ is a registered trademark of the 3M Company

3M™† Fire Barrier Quick Pass Devices



Features & Benefits

- Hinged for existing cables
- Stackable for multiple penetrations
- Optional mounting brackets - single or triplex
- Install before or after gypsum wall assembly
- Easily identified red color
- Quick to pass cables
- JCAHO and NFPA Life Safety Code 101 compliant
- UL Classified 1, 2 and 3 hour fire (F) and temperature (T) rating
- UL Classified L rating, Hot and Cold Smoke Seal
- ULC

The Quick Pass Device makes installation and retrofitting a snap. Simply follow the instructions located on the product. Use this product in new construction or update your fire protection in a renovation - the optional mounting bracket opens easily allowing retrofit installations. As your needs change, reuse the device for additional cables and wiring.

Catalog Number	Type	Size
PT2RD	Round Device	2" (25 mm) Round
PT4SD	Square Device	4" (101mm) Square
PT4RD	Round Device	4" (101mm) Round

† 3M™ is a registered trademark of the 3M Company

3M™† Fire Barrier CP-25WB+ Caulk



Features & Benefits

- Water based - easy cleanup and routine disposal with no special handling
- One-part system - no mixing or measuring required
- Intumescent and endothermic
- No-sag, non-halogen formula
- Fast drying - tack-free in approximately 10 to 15 minutes
- Water-resistant seal
- Paintable
- Documented aging properties

Our premium, intumescent latex/water-based caulk. CP 25WB Caulk can be installed with a standard caulking gun.



Catalog Number	Type
FSP-BC-25	10.1 ounce Tube

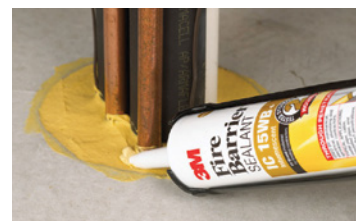
3M™† Fire Barrier IC-15WB+ Caulk



Features & Benefits

- Cost effective
- UL tested
- Distinctive yellow color makes inspections easier
- For use as a one-part fire, smoke, noxious gas and water sealant

This is an affordable firestop caulk that helps you stay on budget. Its unique intumescent property allows IC 15WB Caulk to effectively contain fire and smoke at its origin. IC 15WB Caulk can be installed with a standard caulking gun.



Catalog Number	Type
FSP-BC-15	10.1 ounce Tube

3M™ Aluminum Foil Tape 425



Features & Benefits

- 3-mil aluminum foil
- Acrylic adhesive performs in high temperatures

Designed to seal the cut edges of 3M™ Interam Mats to complete the total encapsulation.

Catalog Number	Type
FSP-AT-425	4" (101mm) x 180' (27.5m) Roll

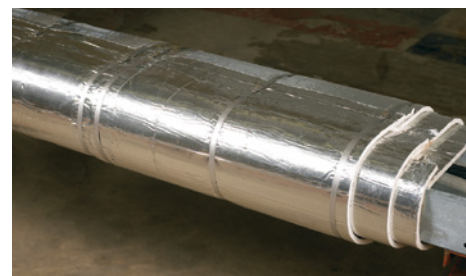
† 3M™ is a registered trademark of the 3M Company

3M™† Interam™† E-5 Series Mat

Features & Benefits

- Provides up to three (3) hours of electrical circuit protection
- Made of a combination of organic/inorganic materials
- Outdoor durable
- Endothermic
- Available with a stainless-steel or aluminum backing
- Outstanding performance in high-intensity fires
- Easy to install in new applications or directly over existing fire protection

Blocks heat penetration by chemically absorbing heat energy to protect structural steel and cable trays.



Catalog Number	Type
FSP-EMAT	24 1/2" (622mm) x 20' (6.09m) Roll

† 3M™ and Interam™ are registered trademarks of the 3M Company

Wall Sleeve Kits



'CT' Type Wall Sleeve
Sleeve is 20" long

'U' Type Wall Sleeve
WS (Wall Sleeve) shown
Sleeve is 20" long

- "CT" Type tray includes two (2) pair 9ZN-800* splice plates with 3/8" zinc plated hardware.
 - "U" Type tray does not include splices. Example uses include Wire Basket or Half-Rack.
- * Insert tray height.



Classified by Underwriters Laboratories, Inc. as to it's suitability as an equipment grounding conductor only. 556E

Wall Sleeve Part Numbering

Example: 9P - xxx - CT - 4 - 12				
Finish	Type	Tray Type	Tray Height	Tray Width
P = Pregalvanized	WS = Wall Sleeve	CT = Cable Tray † U = Universal	4	06 = 6"
			5	09 = 9"
			6	12 = 12"
			7	18 = 18"
				24 = 24"
				30 = 30"
				36 = 36"

† 'CT' Type furnished with steel splice plates (9ZN-800*). For aluminum cable trays use the furnished splice plates and field drill 13/32" diameter holes in the aluminum side rails.