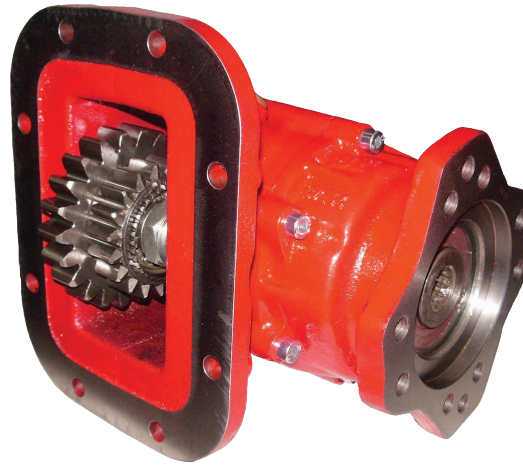


3800 SERIES



The 3800 series PTO was developed based on the 3200 series, which has been proven in the market for over a decade. This 8 bolt PTO meets the demands of the market for a hot shift PTO for the 8 bolt aperture. This PTO features air shifting, and a wide range of ratios and outputs.

Transmission applications:

- Hot Shift, 8 bolt bottom mount. Fits most common transmissions.

Typical uses:

- Dump Trucks
- Water Trucks
- Spreaders
- Walking Floor
- Low Boy
- and more

Features and benefits:

- Symmetrical housing design allows for multiple configuration options to fit the application.
- Housing design permits "shaft high" and "shaft low" installation.
- Industry exclusive idler shaft with locking nut.
- Industry leading gasket material and Viton™ O-ring material & shaft seals.
- Deep gear tooth carburization process creates stronger gear surfaces for long life.
- Clutch pack material is designed to provide smooth engagement and long life.

Competitive with:

Muncie CS8, Chelsea 282

Torque ratings: up to 250 lb. ft.



Powering Business Worldwide

BACKED BY

Roadranger

SUPPORT

Eaton
Vehicle Group
13100 E. Michigan Ave.
Kalamazoo, MI 49053 USA
800-826-HELP (4357)
www.eatonpartsonline.com

© 2019 Eaton
All Rights Reserved.
Printed in USA.
APSL0327 0519

Eaton and Roadranger are registered trademarks of Eaton. All trademarks, logos and copyrights are those of their respective owners.