



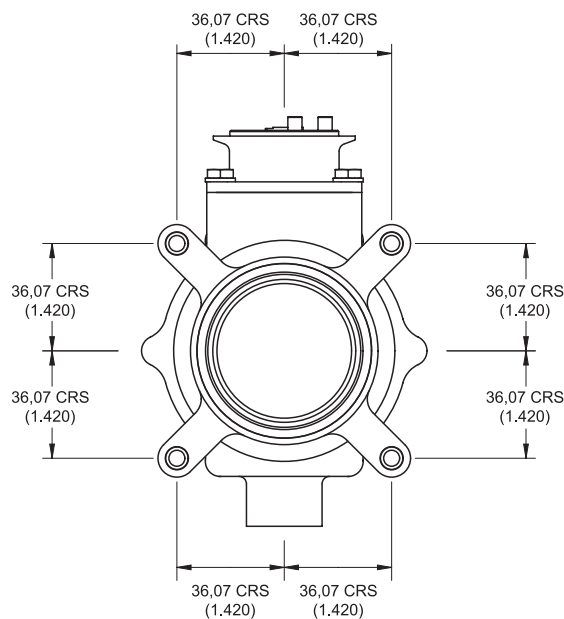
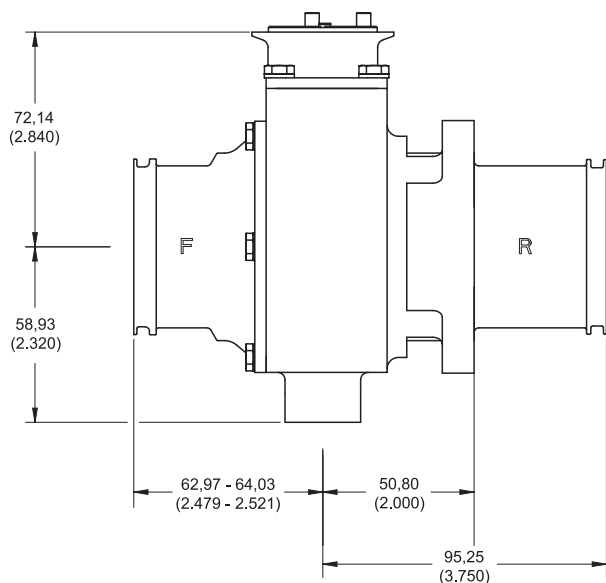
This Eaton designed ball valve assembly incorporates a spherical plug seated within the housing. The spherical plug incorporates journals mounted in bearings such that the plug can be rotated through 90 degrees to open and close the flow path. The input shaft is connected to the spherical plug and incorporates an interface for the actuator.

Design Features

- The input shaft incorporates an integral lightning isolator, this prevents any lightning current and fault current present on the actuator drive train from entering the fuel tank.
- The housing incorporates a 4 hole flange to allow the valve to be mounted to a spar.

Specification

Pedestal Ball Valve (3in) Part No. 12M0037
 Space Envelope 159.25 x 95.14 x 137.15mm
 (6.27 x 3.75 x 5.4in)
 Operating Pressure 60psi (414kPa)
 Proof Pressure 120psi (827kPa)
 Ultimate Pressure 360psi (2482kPa)
 Torque (Valve Only) ≤ 20lb in
 Leakage (External) Nil
 Leakage (Internal) ≤ 5cc min
 Dry Weight 0.908kg (2.0lb)
 Temperature Range -55°C to 70°C (-67°F to 158°F)
 Altitude 0 to 50,000ft
 Endurance 100,000 cycles
 Operating Media Fuel



Dimensions in mm (in)

Eaton Aerospace Limited
 Aerospace Group
Fuel Systems Division
 Abbey Park, Southampton Road
 Titchfield, Fareham
 Hampshire, PO14 4QA
 UK
 Tel: +44 (0)1329 853000
 Fax: +44 (0)1329 853797
 www.eaton.com/aerospace

Eaton Aerospace Limited
 Aerospace Group
Fuel Systems Division
 Pathfields Business Park
 Station Road, South Molton
 Devon, EX36 3DW
 UK
 Tel: +44 (0)1769 573371
 Fax: +44 (0)1769 572755

Eaton
 Aerospace Group
Fuel Systems Division
 23555 Euclid Avenue
 Cleveland, Ohio 44117
 USA
 Tel: (216) 692 6000
 Fax: (216) 692 6331

Eaton
 Aerospace Group
Fuel Systems Division
 9650 Jeronimo Road
 Irvine, California 92618
 USA
 Tel: (949) 452 9500
 Fax: (949) 452 9991