

Power distribution  
Ark•Gard ENRX receptacles

CROUSE-HINDS  
SERIES

# Ark•Gard ENRX receptacles

## Superior protection from harsh environments

Now available with  
**NEMA 4X RATING**  
**CAPTIVE SCREWS**  
**EASY RETROFIT DESIGN**

**EATON**

*Powering Business Worldwide*



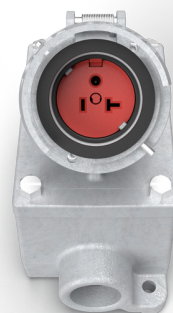




A large offshore oil rig with yellow structural beams and pipes, situated in a body of water under a clear blue sky. The rig is supported by several vertical pillars.

Increased reliability  
Increased safety

## Ark•Gard Series





# Ark•Gard ENRX receptacles

ARK•GARD® is now available with a new ENRX cover that provides NEMA 4X\* protection with a broader temperature range, captive screws and panel mount capability. Featuring a retrofit cover design, which allows customers to purchase the cover and install it on the existing aluminum back box to get the NEMA 4X\* rating.

## Temperature range

Extended temperature range of -40°C to +60°C as standard

## NEMA 4X\* gasket

Providing NEMA 4X\* protection against water ingress in the most demanding conditions

## Captive screws

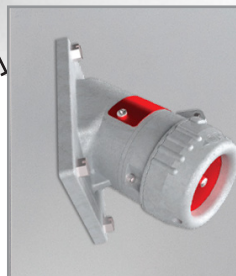
Provide secure fastening while reducing costs associated with lost or damaged screws

## Panel mount capability

No special EDS or EFS back boxes needed for Class I, Div 2, Groups B, C, D or Class I, Zone 2, IIA, IIB+H2 environments

## Retrofit design

NEMA 4X\* rating available by purchasing the cover and using the existing back box



\* If existing back box is iron and is used with new X series cover, it is NEMA 4 rated. To achieve NEMA 4X rating, the back box and the cover must be aluminum. Questions, please contact your local sales rep or Eaton's customer service.

# Ark•Gard ENRX receptacles

Ark•Gard® ENRX receptacles come equipped with exclusive features that increase the life of the product, reduce maintenance costs, and eliminate the need to purchase costly replacement parts. There is no other product offering on the market today that comes equipped with time-saving saddle clamp terminals or the added safety of a lockout/tagout hole. The ENRX receptacle series is the ideal solution for applications where increased safety and reliability are critical.

## Applications:

Ark•Gard® products are used:

- In applications that require additional environmental protection
- With portable or fixed electrical equipment such as motor generator units, welders, pumps, compressors, heating and cooling units, cellular relay stations, conveyors, lighting systems, and similar equipment
- In areas made hazardous by the presence of flammable vapors and gases or combustible dusts
- When power requirements do not exceed 20 amperes

## Standard materials:

- Receptacle housing, spring door and plug body – die cast copperfree aluminum
- Interiors: receptacle – Krydon® fiberglass-reinforced polyester material; plug – nylon 100
- Contacts: receptacle blade – brass; receptacle switch – silver; plug – brass
- Receptacle cover hinge pin and spring – stainless steel
- Receptacle gasket – neoprene
- Plug bushing – neoprene
- Back boxes – copper-free aluminum

## Standard finishes:

- Copper-free aluminum – aluminum acrylic paint
- Brass – natural

## Grounding:

- NEC Article 501 and CEC Section 18 requires that metal frames or exposed non-current-carrying metal parts of portable devices used in hazardous locations be grounded through an extra conductor in the portable cord. ENRX Receptacles and ENP Plugs are provided with an extra grounding pole.

## Options:

### Description:

Corro-free™ epoxy powder finish for added corrosion resistance..... S752

## Electrical ratings:

### Receptacles:

- 15 amperes; 125 VAC and 250 VAC, 50–400 hertz
- 20 amperes; 125 VAC and 250 VAC, 50–400 hertz

### Plugs:

- 15 amperes; 125 VAC and 250 VAC, 50–400 hertz
- 20 amperes; 125 VAC and 250 VAC, 50–400 hertz

## Certifications and compliances:

### ENRX ratings

Class I, Division 2, Groups B, C, D	EDS, EFS back box and enclosure with panel mount kit	
Class I, Zone 2, IIA, IIB+H2		
Class II, Groups F, G; Class III	EDS and EFS back box only	
NEMA 4X*	EDS, EFS aluminum back box or enclosure rated NEMA 4X/IP66†	Screw cap closed, no plug inserted
IP66		
NEMA 4	EDS, EFS iron back box	
NEMA 3X	EDS, EFS aluminum back box or enclosure rated NEMA 4X/IP66†	Screw cap open and plug inserted
IP54		
NEMA 3	EDS, EFS iron back box	

†When mounted to enclosure less than NEMA 4/4X, installation is de-rated to the NEMA/IP rating of the enclosure.

## UL standard:

- UL1203, UL121201, UL498
- Applies to 20A models only

## CSA standard:

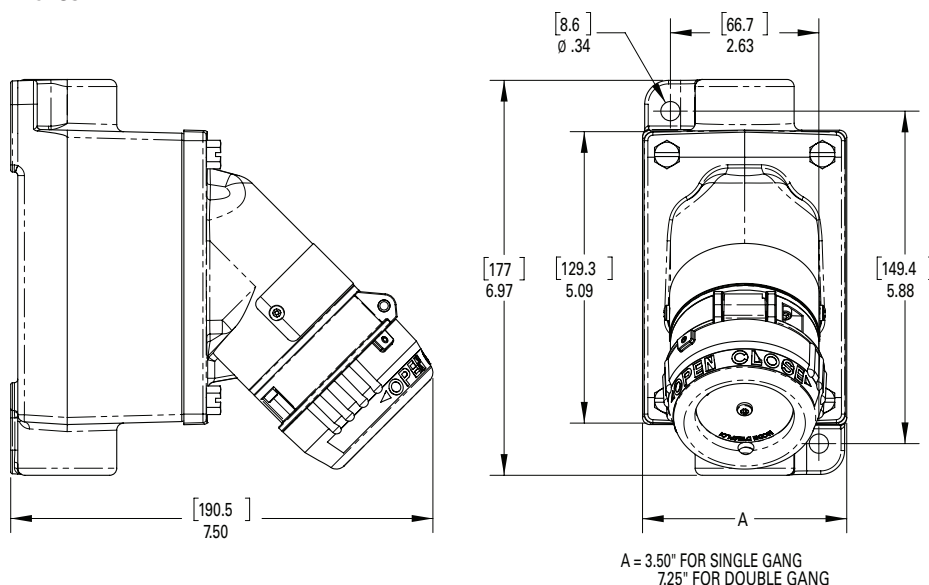
- C22.2 No. 0, 30, 42, 94 & 159
- Applies to 15A & 20A models

## Environmental ratings:

- -40°C to +60°C (-40°F to +140°F)

## Dimensions:

### In Inches:



\* If existing back box is iron and is used with new X series cover, it is NEMA 4 rated. To achieve NEMA 4X rating, the back box and the cover must be aluminum. Questions, please contact your local sales rep or Eaton's customer service.

# Ark•Gard ENRX receptacles

## Ordering information

### Part number example

**ENRCX22202 S752**

NEMA-4X rated aluminum ENRX double gang 20A, 250V receptacle with a through feed back box, ¾" hub, and epoxy coating

<p><b>ENR</b></p> <p><b>Series</b></p> <table border="1"> <tr> <td><b>ENR</b></td> <td>Dead-front, delayed action, circuit breaking, factory sealed receptacle/control station cover</td> </tr> <tr> <td></td> <td>Class I, Groups C &amp; D, Class II, Groups F &amp; G</td> </tr> </table> <p>X configurations suitable for Class I, Group B standard</p> <p><b>Hub arrangement†</b></p> <table border="1"> <tr> <td><b>Blank</b></td> <td>Dead end</td> </tr> <tr> <td><b>C</b></td> <td>Through feed</td> </tr> </table> <p>†For assemblies with back boxes only</p> <p>Only applies when ordering the receptacle with a back box</p> <p><b>Group B</b></p> <table border="1"> <tr> <td><b>B</b></td> <td>Model M4: UL Listed, supplied with EFS back box</td> </tr> <tr> <td></td> <td>Model M3: non-listed, supplied with EDS back box</td> </tr> <tr> <td></td> <td>X Configurations – selection not applicable, EDS back box standard, no EFS option)</td> </tr> </table> <p>Only applies when ordering an M3 or M4 with a back box</p> <p><b>Gasketed**</b></p> <table border="1"> <tr> <td><b>Blank</b></td> <td>NEMA 3R, Class I, Division 1</td> </tr> <tr> <td><b>X</b></td> <td>Gasketed, NEMA 4X, Class I, Division 2</td> </tr> </table> <p>**X not valid with M3 or M4 models</p>	<b>ENR</b>	Dead-front, delayed action, circuit breaking, factory sealed receptacle/control station cover		Class I, Groups C & D, Class II, Groups F & G	<b>Blank</b>	Dead end	<b>C</b>	Through feed	<b>B</b>	Model M4: UL Listed, supplied with EFS back box		Model M3: non-listed, supplied with EDS back box		X Configurations – selection not applicable, EDS back box standard, no EFS option)	<b>Blank</b>	NEMA 3R, Class I, Division 1	<b>X</b>	Gasketed, NEMA 4X, Class I, Division 2	<p><b>C</b></p>	<p><b>B</b></p>	<p><b>X</b></p>	<p><b>2</b></p> <p><b>Hub size‡</b></p> <table border="1"> <tr> <td><b>1</b></td> <td>½"</td> </tr> <tr> <td><b>2</b></td> <td>¾"</td> </tr> <tr> <td><b>3</b></td> <td>1"</td> </tr> </table> <p>‡For assemblies with back boxes only</p> <p>Only applies when ordering the receptacle with a back box</p> <p><b>Back box or receptacle only</b></p> <table border="1"> <tr> <td><b>1</b></td> <td>Single gang (receptacle with back box)</td> </tr> <tr> <td><b>2</b></td> <td>Double gang (receptacle with back box)</td> </tr> <tr> <td><b>5</b></td> <td>Receptacle only, 125 volt</td> </tr> <tr> <td><b>6</b></td> <td>Receptacle only, 250 volt</td> </tr> </table> <p>Aluminum standard for all models</p>	<b>1</b>	½"	<b>2</b>	¾"	<b>3</b>	1"	<b>1</b>	Single gang (receptacle with back box)	<b>2</b>	Double gang (receptacle with back box)	<b>5</b>	Receptacle only, 125 volt	<b>6</b>	Receptacle only, 250 volt	<p><b>2</b></p>	<p><b>20</b></p> <p><b>Amperage</b></p> <table border="1"> <tr> <td><b>15</b></td> <td>15 amp</td> </tr> <tr> <td><b>20</b></td> <td>20 amp</td> </tr> </table>	<b>15</b>	15 amp	<b>20</b>	20 amp	<p><b>1</b></p> <p><b>Voltage</b></p> <table border="1"> <tr> <td><b>1</b></td> <td>125 volt</td> </tr> <tr> <td><b>2</b></td> <td>250 volt</td> </tr> </table>	<b>1</b>	125 volt	<b>2</b>	250 volt	<p><b>M4</b></p> <p><b>Model</b></p> <table border="1"> <tr> <td><b>Blank</b></td> <td></td> </tr> <tr> <td><b>M4</b></td> <td>Must be used to specify M4 model only</td> </tr> </table>	<b>Blank</b>		<b>M4</b>	Must be used to specify M4 model only	<p><b>S752</b></p> <p><b>Options</b></p> <table border="1"> <tr> <td><b>Blank</b></td> <td></td> </tr> <tr> <td><b>CAN20</b></td> <td>Dedicated 20 amp, 125 volt faceplate (Canada) (Only available with M4 or ENRX)</td> </tr> <tr> <td><b>GB</b></td> <td>Group B (non-listed) with EDS back box (Only available with M4)</td> </tr> <tr> <td><b>S752</b></td> <td>Epoxy coated receptacle and back box</td> </tr> </table>	<b>Blank</b>		<b>CAN20</b>	Dedicated 20 amp, 125 volt faceplate (Canada) (Only available with M4 or ENRX)	<b>GB</b>	Group B (non-listed) with EDS back box (Only available with M4)	<b>S752</b>	Epoxy coated receptacle and back box
<b>ENR</b>	Dead-front, delayed action, circuit breaking, factory sealed receptacle/control station cover																																																												
	Class I, Groups C & D, Class II, Groups F & G																																																												
<b>Blank</b>	Dead end																																																												
<b>C</b>	Through feed																																																												
<b>B</b>	Model M4: UL Listed, supplied with EFS back box																																																												
	Model M3: non-listed, supplied with EDS back box																																																												
	X Configurations – selection not applicable, EDS back box standard, no EFS option)																																																												
<b>Blank</b>	NEMA 3R, Class I, Division 1																																																												
<b>X</b>	Gasketed, NEMA 4X, Class I, Division 2																																																												
<b>1</b>	½"																																																												
<b>2</b>	¾"																																																												
<b>3</b>	1"																																																												
<b>1</b>	Single gang (receptacle with back box)																																																												
<b>2</b>	Double gang (receptacle with back box)																																																												
<b>5</b>	Receptacle only, 125 volt																																																												
<b>6</b>	Receptacle only, 250 volt																																																												
<b>15</b>	15 amp																																																												
<b>20</b>	20 amp																																																												
<b>1</b>	125 volt																																																												
<b>2</b>	250 volt																																																												
<b>Blank</b>																																																													
<b>M4</b>	Must be used to specify M4 model only																																																												
<b>Blank</b>																																																													
<b>CAN20</b>	Dedicated 20 amp, 125 volt faceplate (Canada) (Only available with M4 or ENRX)																																																												
<b>GB</b>	Group B (non-listed) with EDS back box (Only available with M4)																																																												
<b>S752</b>	Epoxy coated receptacle and back box																																																												

### Part number examples of single gang 20A, 125V ENR:

- ENRX - Receptacle Only: ENRX5201
- ENRX - Receptacle with a back box: ENRX21201
- M3 - Receptacle Only: ENR5201
- M3 - Receptacle with a through feed back box: ENRCB21201
- M4 - Receptacle Only: ENR5201 M4
- M4 - Receptacle with a through feed back box: ENRCB21201 M4



## Notes

[illegible]

**U.S. (global headquarters):  
Eaton's Crouse-Hinds, B-Line  
and Oil and Gas business**

1201 Wolf Street  
Syracuse, NY 13208

(866) 764-5454  
FAX: (315) 477-5179  
FAX Orders Only:  
(866) 653-0640

[crousecustomerctr@eaton.com](mailto:crousecustomerctr@eaton.com)

**For more information:**

If further assistance is  
required, please contact  
an authorized Eaton  
Distributor, Sales Office,  
or Customer Service  
Department.

**Canada**

Toll Free: 800-265-0502  
FAX: (800) 263-9504  
FAX Orders only: (866) 653-0645

**Mexico/Latin America/Caribbean**

52-555-804-4000  
FAX: 52-555-804-4020  
[ventascentromex@eaton.com](mailto:ventascentromex@eaton.com)

**Europe (Germany)**

49 (0) 6271 806-500  
49 (0) 6271 806-476  
[info-ex@eaton.com](mailto:info-ex@eaton.com)

**Eaton Middle East**

9714-8066100  
FAX: 9714-8894813  
[chbl-me@eaton.com](mailto:chbl-me@eaton.com)

**Singapore**

65-6645-9888  
FAX: 65-6297-4819  
[chsi-sales@eaton.com](mailto:chsi-sales@eaton.com)

**China**

86-21-2899-3600  
FAX: 86-21-2899-4055  
[echsales@eaton.com](mailto:echsales@eaton.com)

**Korea**

82-2-3484-6783  
82-2-3484-6778  
[ECHKsales@eaton.com](mailto:ECHKsales@eaton.com)

**Australia**

61-2-8787-2777  
FAX: 61-2-9609-2342  
[Crousehindsanz@eaton.com](mailto:Crousehindsanz@eaton.com)

**India**

91-124-4683888  
FAX: 91-124-4683899  
[cchindia@eaton.com](mailto:cchindia@eaton.com)

**Eaton's Crouse-Hinds**  
1201 Wolf Street  
Syracuse, NY 13208  
[Eaton.com](http://Eaton.com)

**Eaton**  
1000 Eaton Boulevard  
Cleveland, OH 44122  
United States  
[Eaton.com](http://Eaton.com)

© 2022 Eaton  
All Rights Reserved  
Printed in USA  
Publication No. BR401006EN  
September 2022

Eaton is a registered trademark.

All other trademarks are property  
of their respective owners.

**For additional information,  
visit [Eaton.com](http://Eaton.com)**

Follow us on social media to get the  
latest product and support information.

